

Product datasheet for **TA301500**

RAD21 Mouse Monoclonal Antibody [Clone ID: CM110-2C10]

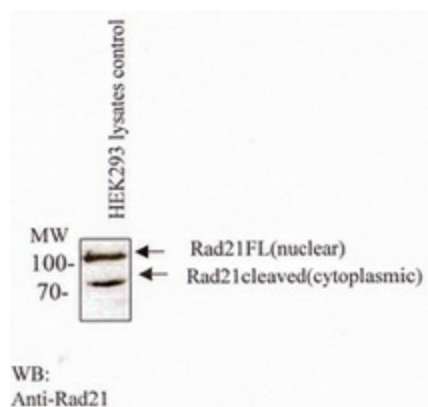
Product data:

Product Type:	Primary Antibodies
Clone Name:	CM110-2C10
Applications:	WB
Recommend Dilution:	WB: 1:500
Reactivity:	Human, Mouse
Host:	Mouse
Isotype:	IgG1, kappa
Clonality:	Monoclonal
Immunogen:	An N-terminal fusion protein of the C-terminal fragment of Scc1 subunit human cohesin (amino acids 544-631 of hRad21)
Formulation:	PBS and 0.1% sodium azide
Concentration:	1 mg/ml
Purification:	IgG purified
Gene Name:	RAD21 cohesin complex component
Database Link:	NP_006256 Entrez Gene 19357 Mouse Entrez Gene 5885 Human
Background:	The cohesin complex plays an important role in tethering sister chromatids during the prophase through anaphase stages of mitosis, making certain that genomic information is replicated accurately. As the cellular division process continues, separase destroys the cohesin complex by means of cleaving its Scc1 subunit (Mcd1/Scc1/hRad21), allowing the chromatids to separate and divide with the cell. During apoptosis the C-terminal portion of hRad21 is cleaved and translocated to the cytoplasm. This cleavage and translocation may act as a nuclear signal that promotes and accelerates subsequent events of apoptosis (2).
Synonyms:	CDLS4; hHR21; HR21; HRAD21; MCD1; NXP1; SCC1
Protein Families:	Druggable Genome
Protein Pathways:	Cell cycle



[View online »](#)

Product images:



Western blot with monoclonal anti-Rad21 in HEK293 lysates.