

## Product datasheet for **TA322704**

### ABCG2 Rabbit Polyclonal Antibody

#### Product data:

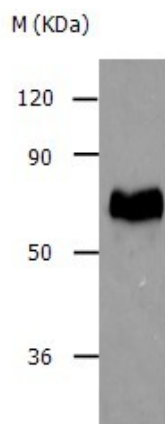
Product Type:	Primary Antibodies
Applications:	IHC, WB
Recommend Dilution:	ELISA: 1:2000-10000, WB: 1:1000-5000, IHC: 1:100-300
Reactivity:	Human, Mouse, Rat
Host:	Rabbit
Isotype:	IgG
Clonality:	Polyclonal
Immunogen:	Synthetic peptide corresponding to a region derived from 609-621 amino acids of Human ATP-binding cassette sub-family G member 2
Formulation:	PBS pH7.3, 0.05% NaN <sub>3</sub> , 50% glycerol
Concentration:	0.6mg/ml
Purification:	Antigen affinity purification
Predicted Protein Size:	72 kDa
Gene Name:	ATP binding cassette subfamily G member 2 (Junior blood group)
Database Link:	<a href="#">NP_004818 Entrez Gene 26357 Mouse</a> <a href="#">Entrez Gene 312382 Rat</a> <a href="#">Entrez Gene 9429 Human</a>
Background:	The membrane-associated protein encoded by this gene is included in the superfamily of ATP-binding cassette (ABC) transporters. ABC proteins transport various molecules across extra- and intra-cellular membranes. ABC genes are divided into seven distinct subfamilies (ABC1; MDR/TAP; MRP; ALD; OABP; GCN20; White). This protein is a member of the White subfamily. Alternatively referred to as a breast cancer resistance protein; this protein functions as a xenobiotic transporter which may play a major role in multi-drug resistance. It likely serves as a cellular defense mechanism in response to mitoxantrone and anthracycline exposure. Significant expression of this protein has been observed in the placenta; which may suggest a potential role for this molecule in placenta tissue. Multiple transcript variants encoding different isoforms have been found for this gene.
Synonyms:	ABC15; ABCP; BCRP; BCRP1; BMDP; CD338; CDw338; EST157481; GOUT1; MRX; MXR; MXR-1; MXR1; UAQTL1
Protein Families:	Druggable Genome, ES Cell Differentiation/IPS, Transmembrane



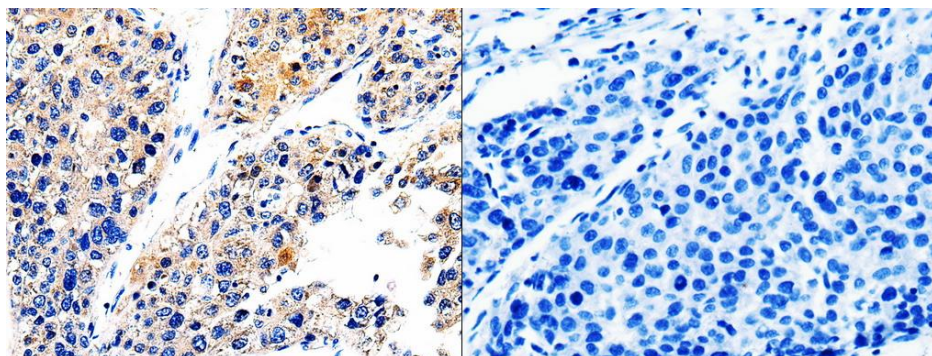
[View online »](#)

Protein Pathways: ABC transporters

## Product images:



Predicted band size: 72kDa. Positive control: HepG2 cell lysate. Recommended dilution: 1/1000-5000. (Gel: 10%SDS-PAGE Lysate: 20 ug Primary antibody: 1/1000 dilution Secondary antibody: Donkey anti Rabbit IgG - H&L (HRP) at 1/3000 dilution Exposure time: 10 seconds)



Predicted cell location: Cytoplasm. Positive control: Human liver cancer tissue. Recommended dilution: 1/100-300 The image on the left is immunohistochemistry of paraffin-embedded Human liver cancer tissue using ABCG2 antibody at dilution 1/100, on the right is treated with the synthetic peptide. (Original magnification: x200)