

Product datasheet for **TA324345**

Tuberin (TSC2) Mouse Monoclonal Antibody [Clone ID: 249CT19.1.3]

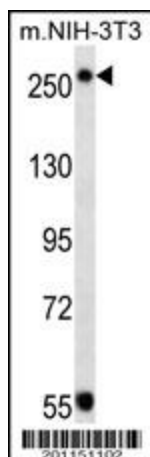
Product data:

Product Type:	Primary Antibodies
Clone Name:	249CT19.1.3
Applications:	IF, WB
Recommend Dilution:	IF: 1:10~50, WB: 1:100
Reactivity:	Mouse
Host:	Mouse
Isotype:	IgG1, kappa
Clonality:	Monoclonal
Immunogen:	This TSC2 monoclonal antibody is generated from mouse immunized with TSC2 recombinant protein.
Formulation:	Purified monoclonal antibody supplied in PBS with 0.09% (W/V) sodium azide.
Concentration:	0.5 mg/ml
Purification:	This antibody is purified through a protein G column, followed by dialysis against PBS.
Predicted Protein Size:	200608 Da
Gene Name:	tuberous sclerosis 2
Database Link:	NP_000539 Entrez Gene 22084 Mouse
Synonyms:	LAM; PPP1R160; TSC4
Protein Families:	Druggable Genome
Protein Pathways:	Insulin signaling pathway, mTOR signaling pathway, p53 signaling pathway

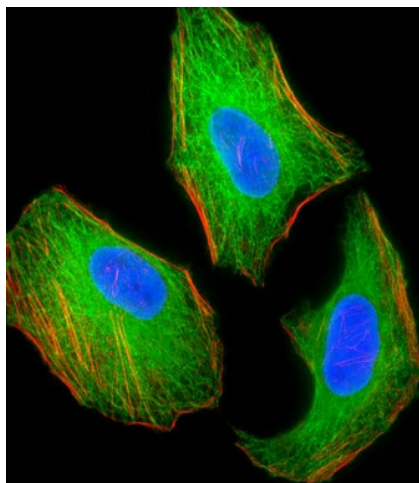


[View online »](#)

Product images:



TSC2 Antibody (Cat. #TA324345) western blot analysis in mouse NIH-3T3 cell line lysates (35ug/lane). This demonstrates the TSC2 antibody detected the TSC2 protein (arrow).



IF image of HeLa cell stained with TSC2 Antibody (Cat#TA324345/SG110509AA). HeLa cells were incubated with TSC2 primary antibody (1:25, 1 h at 37°C). For secondary antibody, Alexa Fluor® 488 conjugated donkey anti-mouse antibody (green) was used (1:400). Cytoplasmic actin was counterstained with Alexa Fluor® 555 (red) conjugated Phalloidin (7 units/ml). Nuclei were counterstained with DAPI (blue). TSC2 immunoreactivity is localized to Microtubules significantly.