

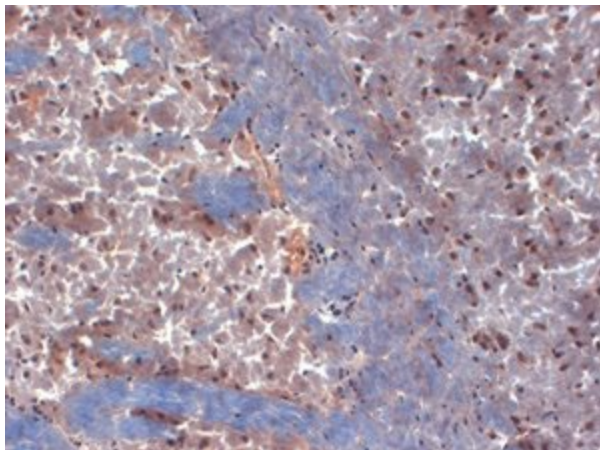
Product datasheet for TA326483

Kv1.6 (KCNA6) Mouse Monoclonal Antibody [Clone ID: S19-36]

Product data:

Product Type:	Primary Antibodies
Clone Name:	S19-36
Applications:	IHC
Recommend Dilution:	WB: 1ug/ml, IHC: 0.1-1ug/ml, IF: 1-10ug/ml
Reactivity:	Human, Mouse, Rat
Host:	Mouse
Isotype:	IgG3
Clonality:	Monoclonal
Immunogen:	Synthetic peptide 507-525 (RERRSSYLPTPHRAYAEKR, cytoplasmic C-terminus) of rat Kv1.6
Formulation:	PBS pH7.4, 50% glycerol, 0.09% sodium azide
Concentration:	1 mg/ml
Purification:	PEG Purified
Gene Name:	potassium voltage-gated channel subfamily A member 6
Database Link:	NP_002226 Entrez Gene 16494 MouseEntrez Gene 64358 RatEntrez Gene 3742 Human
Background:	Voltage gated channels are tetrameters composed of four subunit consists of six transmembrane segments with cytoplasmic NH2 and COOH-termini. Members of the KV1-4 subfamilies generate functional K ⁺ channels in a homotetrameric configuration .
Synonyms:	HBK2; KV1.6; PPP1R96
Note:	Detects ~60kDa. Does not cross react with other Kv1 channels
Protein Families:	Druggable Genome, Ion Channels: Potassium, Transmembrane

[View online »](#)

Product images:

IHC analysis of Kv1.6 in frozen sections of mouse brain extract using the antibody