

## Product datasheet for TA327748

### TPSAB1 Mouse Monoclonal Antibody [Clone ID: G3]

#### Product data:

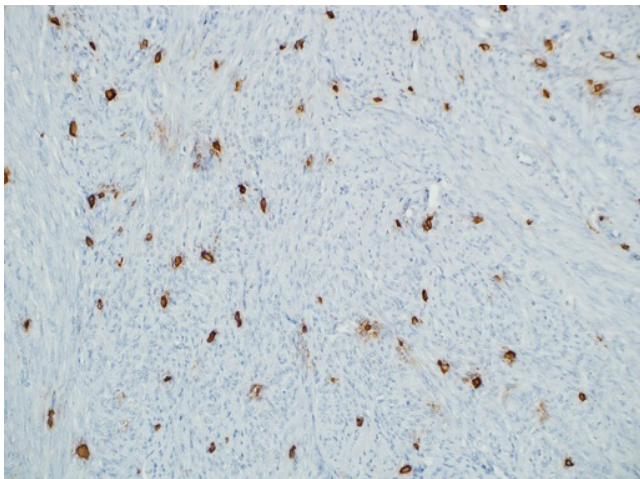
Product Type:	Primary Antibodies
Clone Name:	G3
Applications:	IHC
Recommend Dilution:	IHC: 1:200 - 1:1000
Reactivity:	Human
Host:	Mouse
Isotype:	IgG1
Clonality:	Monoclonal
Formulation:	The antibody is diluted in tris buffered saline, pH 7.3-7.7, with 1% BSA and <1% sodium azide.
Purification:	Affinity purification
Gene Name:	tryptase alpha/beta 1
Database Link:	<a href="#">NP_003285 Entrez Gene 7177 Human</a>
Synonyms:	TPS1; TPS2; TPSB1

**Note:** Tryptases comprise a family of trypsin-like serine proteases, the peptidase family S1. Tryptases are stored in mast cell secretory granules and basophils. These enzymes are released into the extracellular environment, and are resistant to all known endogenous proteinase inhibitors. Several tryptase genes are clustered on chromosome 16p13.3. There are two separate genes: alpha and beta 1. Beta tryptases appear to be the main isoenzymes expressed in mast cells whereas in basophils, alpha tryptases predominate. Tryptases have been implicated as mediators in the pathogenesis of asthma and other allergic and inflammatory disorders. Anti-tryptase is a good marker for mast cells, basophils, and their derivatives. Mastocytosis is a term collectively used for a group of disorders in which there is abnormal accumulation of mast cells in one or multiple organs. Anti-tryptase, combined with anti-CD2, anti-CD25, and anti-CD117, can be useful in the differential diagnosis of reactive mast cell hyperplasia, myelogenous neoplasms, mast cell leukemia, and mastocytosis.

**Protein Families:** Druggable Genome, Protease, Secreted Protein



[View online »](#)

**Product images:**

Immunohistochemistry staining of Paraffin Uterus tissue by Tryptase antibody (dilution: 1:200 - 1:1000; visualization of staining: Cytoplasmic)