

Product datasheet for TA336409

Caspase 1 (CASP1) Mouse Monoclonal Antibody [Clone ID: 14F468]

Product data:

Product Type:	Primary Antibodies
Clone Name:	14F468
Applications:	IHC, WB
Recommend Dilution:	WB: 0.5-2 ug/ml, IHC: 1:10-1:500, IHC-P: 1:10-1:500
Reactivity:	Human, Mouse
Host:	Mouse
Isotype:	IgG1, kappa
Clonality:	Monoclonal
Immunogen:	A synthetic peptide corresponding to amino acids 371-390 RQVRFSEQPDGRAQMPTE of human caspase-1 was used as immunogen.
Formulation:	PBS containing 0.05% BSA, 0.05% Sodium Azide. Store at 4C short term. Aliquot and store at -20C long term. Avoid freeze-thaw cycles.
Concentration:	0.5 mg/ml
Purification:	Protein G purified
Predicted Protein Size:	45 kDa
Gene Name:	caspase 1
Database Link:	NP_150634 Entrez Gene 12362 MouseEntrez Gene 834 Human
Background:	Caspases are a family of cysteine proteases that are key mediators of programmed cell death or apoptosis. The precursor form of all caspases is composed of a prodomain, and large and small catalytic subunits. The active forms of caspases are generated by several stimuli including ligand-receptor interactions, growth factor deprivation and inhibitors of cellular functions. All known caspases require cleavage adjacent to aspartates to liberate one large and one small subunit, which associate into tetramer to form the active enzyme. Caspase-1/ICE (IL-1b converting enzyme) is similar to the cell death gene CED-3 of Caenorhabditilis elegans and regulates multiple proinflammatory cytokines, including interleukin-1b and interferon-gamma-inducing factor.
Synonyms:	ICE; IL1BC; P45



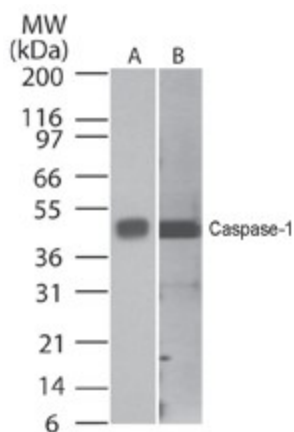
[View online »](#)

Note: Staining of formalin-fixed tissues is enhanced by boiling tissue sections in 10 mM sodium citrate buffer, pH 6.0 for 10-20 min followed by cooling at RT for 20 min.

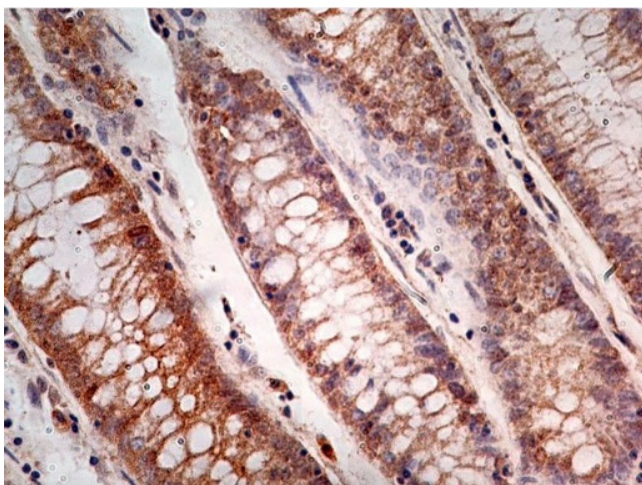
Protein Families: Druggable Genome, Protease

Protein Pathways: Amyotrophic lateral sclerosis (ALS), Cytosolic DNA-sensing pathway, NOD-like receptor signaling pathway

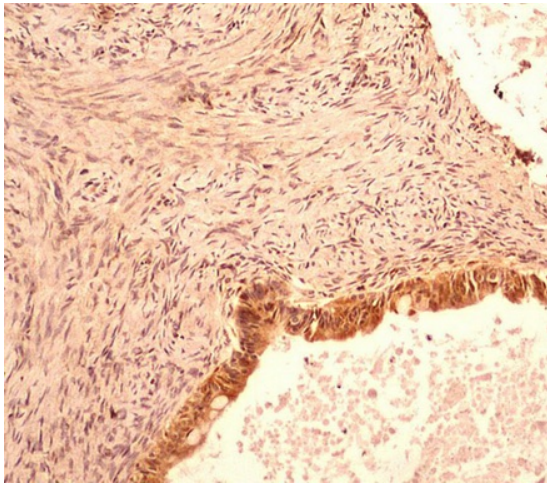
Product images:



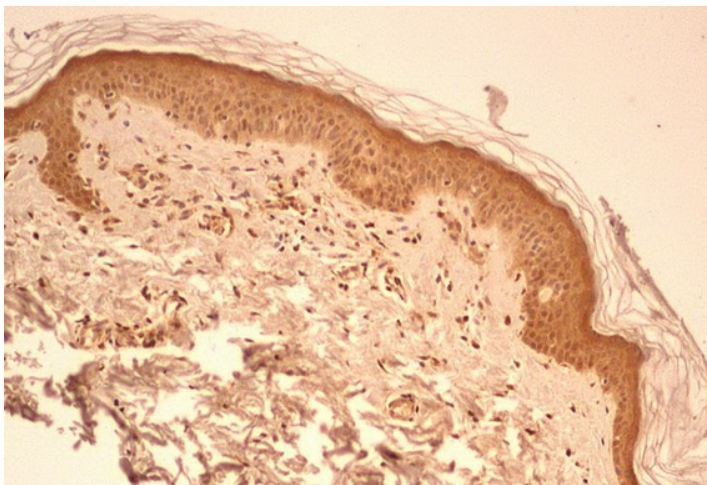
Western Blot: Caspase 1 Antibody (14F468) TA336409 - analysis of Caspase-1 using a Caspase-1 monoclonal antibody. Human HeLa (A) and mouse NIH3T3 lysate probed with Caspase-1 antibody at 0.5 ug/ml and 2 ug/ml, respectively.



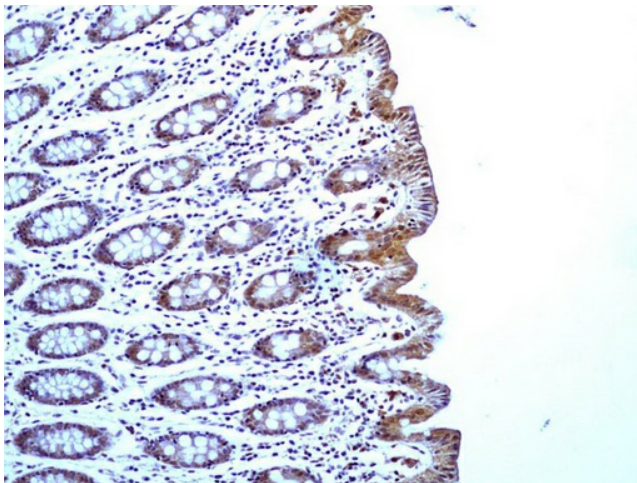
Immunohistochemistry-Paraffin: Caspase 1 Antibody (14F468) TA336409 - Formalin-fixed, paraffin-embedded adenocarcinoma of the rectum stained with Caspase-1 antibody (5 ug/ml), peroxidase-conjugate and DAB chromogen. Staining of formalin-fixed tissues is



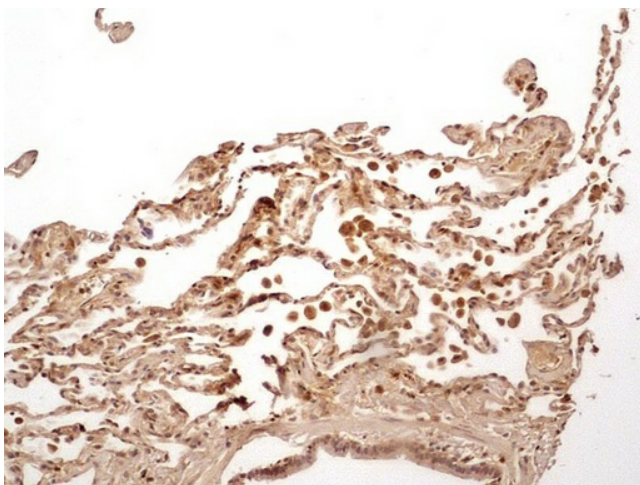
Immunohistochemistry-Paraffin: Caspase 1 Antibody (14F468) TA336409 - IHC-P detection of Caspase 1 in a section of human ovarian cancer using 5 ug/ml concentration of Caspase 1 antibody (clone 14F468).



Immunohistochemistry-Paraffin: Caspase 1 Antibody (14F468) TA336409 - IHC-P detection of Caspase 1 in a section of normal skin from human using 5 ug/ml concentration of Caspase 1 antibody (clone 14F468). Strong cytoplasmic/nuclear staining developed in



Immunohistochemistry-Paraffin: Caspase 1 Antibody (14F468) TA336409 - IHC-P detection of Caspase 1 protein in a section of normal human colon using 5 ug/ml concentration of Caspase 1 antibody (clone 14F468). Distinct cytoplasmic staining along with some



Immunohistochemistry-Paraffin: Caspase 1 Antibody (14F468) TA336409 - IHC-P detection of Caspase 1 protein in a section of normal lung from human using 5 ug/ml concentration of Caspase 1 antibody (clone 14F468). In this representative lung section, dif