

Product datasheet for **TA336465**

D4 (ARHGDI B) Mouse Monoclonal Antibody [Clone ID: 97A1015]

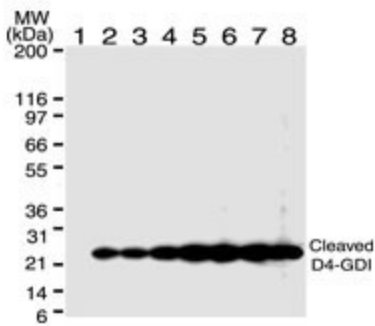
Product data:

Product Type:	Primary Antibodies
Clone Name:	97A1015
Applications:	FC, IHC, WB
Recommend Dilution:	WB: 2 ug/ml, FC: (Intracellular): 0.5-1 ug/10 ⁶ cells, IHC: 1:10-1:500, IHC-P: 1:10-1:500, IP: 1-2 ug/ml
Reactivity:	Human, Mouse
Host:	Mouse
Isotype:	IgG2b, kappa
Clonality:	Monoclonal
Immunogen:	A synthetic peptide corresponding to the region of the Fas-induced cleavage site of human D4-GDI/RhoGDI2 was used as the immunogen.
Formulation:	PBS containing 0.05% BSA, 0.05% Sodium Azide. Store at 4C short term. Aliquot and store at -20C long term. Avoid freeze-thaw cycles.
Concentration:	0.5 mg/ml
Purification:	Protein G purified
Gene Name:	Rho GDP dissociation inhibitor beta
Database Link:	NP_001166 Entrez Gene 11857 Mouse Entrez Gene 397 Human
Background:	D4-GDI (GDP dissociation inhibitor) is a negative regulator of the ras-related Rho family of GTPases. Since the Rho GTPases promote cytoskeletal and membrane changes associated with apoptotic cell death, the removal of the D4-GDI block through its cleavage is important for inducing apoptosis. Caspase-3 cleaves the 28 kD mature form of D4-GDI to give a 23 kD and 5 kD size fragment. The 23 kD fragment then translocates to the nucleus. The mechanisms involving cleavage of D4-GDI with apoptosis are not presently known. Activation of the Jun N-terminal kinase, a regulator of apoptosis, may be one of the mechanisms.
Synonyms:	D4; GDIA2; GDID4; Ly-GDI; LYGDI; RAP1GN1; RhoGDI2
Protein Families:	Druggable Genome
Protein Pathways:	Neurotrophin signaling pathway

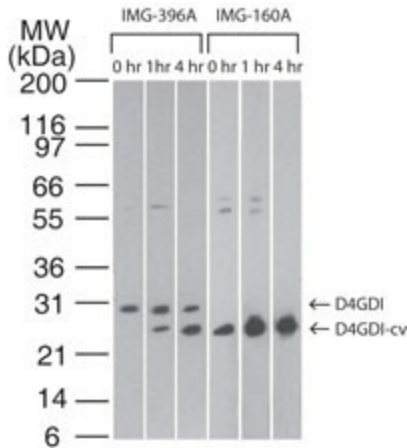


[View online »](#)

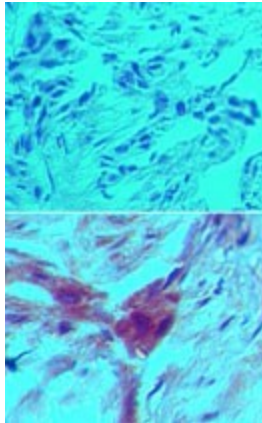
Product images:



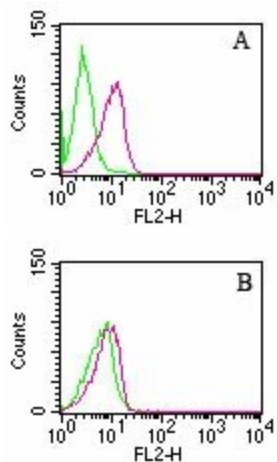
Western Blot: D4-GDI/RhoGDI2 (cleavage specific) Antibody (97A1015) TA336465 - WB analysis: HL60 cells were treated for different time periods with 10 ng/ml of anti-Fas mAb (TA336465, Clone DX2). Harvested cells were lysed and resolved by SDS-PAGE and t



Western Blot: D4-GDI/RhoGDI2 (cleavage specific) Antibody (97A1015) TA336465 - Western blot analysis of D4GDI in Jurkat cells using NB100-56556 (IMG-396A) at 2 ug/ml and TA336465 (IMG-160A) at 0.1 ug/ml. Cells were treated with 2 uM staurosporine for di



Immunohistochemistry-Paraffin: D4-GDI/RhoGDI2 (cleavage specific) Antibody (97A1015) TA336465 - analysis of D4GDI-cv in formalin-fixed, paraffin-embedded human breast tumor tissue using an isotype control (top) and this antibody.



Flow Cytometry: D4-GDI/RhoGDI2 (cleavage specific) Antibody (97A1015) TA336465 - HL60 cells were left untreated (green) or treated with camptothecin to induce apoptosis (red). Cells were analyzed by intracellular flow cytometry using either the (0.5 ug