

Product datasheet for **TA336467**

PGRP1A (PGLYRP3) Mouse Monoclonal Antibody [Clone ID: 187C434]

Product data:

Product Type:	Primary Antibodies
Clone Name:	187C434
Applications:	FC, WB
Recommend Dilution:	WB: 1:500-1:1000, FC: 1:10-1:1000, IF: 1:10-1:2000
Reactivity:	Human
Host:	Mouse
Isotype:	IgM
Clonality:	Monoclonal
Immunogen:	This antibody was developed against KLH-conjugated synthetic peptide corresponding to amino acids 178-193 of human PGRP-1a.
Formulation:	Preservative: 0.05% Sodium Azide. Aliquot and store at -20C or -80C. Avoid freeze-thaw cycles.
Concentration:	This product is unpurified. The exact concentration of antibody is not quantifiable.
Purification:	Ascites
Gene Name:	peptidoglycan recognition protein 3
Database Link:	NP 443123 Entrez Gene 114771 Human
Background:	Primary immune recognition is based on structures common among invading pathogens. Bacterial surface molecules, such as lipopolysaccharide (LPS) and peptidoglycan (PGN), are known to elicit immune reactions ranging from cytokine release to fever. Recently, a family of proteins called peptidoglycan recognition protein (PGRP) has been identified in mouse and human that binds to peptidoglycans expressed on Gram-positive bacteria. Peptidoglycan (PGN) is an essential cell wall component of virtually all bacteria and, thus, it is an excellent target for recognition by the eukaryotic innate immune system. The PGRPs (PGRP-L, PGRP-S, PGRP-1a (PGRP-3), and PGRP-1beta (PGRP-4)) define a new family of human pattern recognition molecules. PGRP-L is primarily expressed in the liver. Although liver is not considered a primary immune organ, liver participates in host defenses by producing acute phase proteins (by hepatocytes) in response to infections and by clearing microorganisms from blood. PGRP-1a mRNA is highly expressed in esophagus, tonsils and thymus and to lesser extent in the stomach, rectum, and brain.



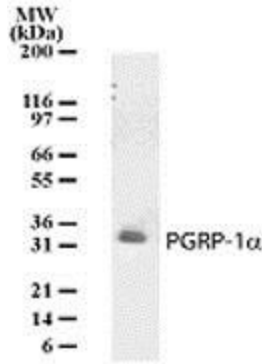
[View online >](#)

Synonyms: PGLYRP1alpha; PGRP-1alpha; PGRPIA

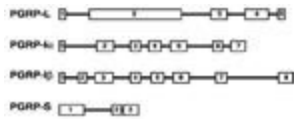
Note: Flow Cytometry (Cell Surface): see Uehara et al, (2005)
 Immunocytochemistry/Immunofluorescence: (see Uehara et al, 2005)

Protein Families: Druggable Genome

Product images:



Western Blot: PGRP1A Antibody (187C434) TA336467 - Analysis of PGRP-1a in cell lysates from human brain using this antibody at a dilution of 1:500.



Flow Cytometry: PGRP1A Antibody (187C434) TA336467 - Genomic organization of PGRPs.