

## Product datasheet for **TA336510**

### Alkaline Phosphatase (ALPP) Mouse Monoclonal Antibody [Clone ID: 8B6]

#### Product data:

Product Type:	Primary Antibodies
Clone Name:	8B6
Applications:	IHC, WB
Recommend Dilution:	WB: 1:1000, ELISA: 1:100-1:2000, IF: 1:10-1:500, IHC: 1:10-1:500, IHC-F: 1:10-1:500, IHC-P: 1:100-1:200, Radioimmunodiffusion
Reactivity:	Human
Host:	Mouse
Isotype:	IgG2a, kappa
Clonality:	Monoclonal
Immunogen:	Hep-2 cells with boosted surface expression of Alkaline Phosphatase, Placental. [UniProt# P05187].
Formulation:	PBS containing 0.05% BSA, 0.05% Sodium Azide. Store at 4C short term. Aliquot and store at -20C long term. Avoid freeze-thaw cycles.
Concentration:	1 mg/ml
Purification:	Protein A purified
Predicted Protein Size:	70 kDa
Gene Name:	alkaline phosphatase, placental
Database Link:	<a href="#">NP_001623 Entrez Gene 250 Human</a>
Background:	Alkaline Phosphatase, Placental, also known as PLAP and ALPP is an alkaline phosphatase located on the second chromosome. Alkaline phosphatases are phosphodiesterases. The placental-specific isozyme of Alkaline Phosphatase is found in trophoblast cells of normal human mature placenta, seminomas of testis and ovarian carcinomas. The detection of alkaline phosphatase in serum is a marker for ovarian and testicular cancer (PMID: 21809268).
Synonyms:	ALP; PALP; PLAP; PLAP-1



[View online »](#)

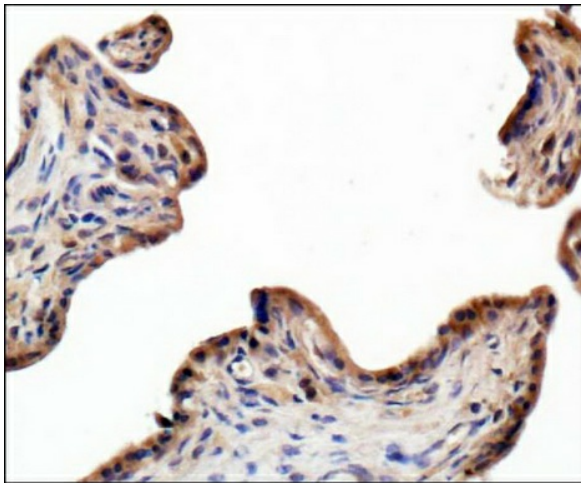
**Note:** This Alkaline Phosphatase, Placental Antibody (8B6) is useful for Immunohistochemistry on paraffin-embedded sections and frozen sections, Immunocytochemistry/Immunofluorescence, ELISA, Western blot and Radioimmunoassay. In WB a band can be seen at ~70 kDa. For IHC, Proteolytic Induced Epitope Retrieval (PIER) is required. Use in Flow Cytometry reported in various pieces of scientific literature

**Protein Pathways:** Folate biosynthesis, Metabolic pathways

**Product images:**



Western Blot: Alkaline Phosphatase, Placental Antibody (8B6) [TA336510] - Analysis of Alkaline Phosphatase (Placental) expression in JAR whole cell lysate.



Immunohistochemistry-Paraffin: Alkaline Phosphatase, Placental Antibody (8B6) [TA336510] - IHC staining of Alkaline Phosphatase (Placental) in human placenta using DAB with hematoxylin counterstain. Proteolytic Induced Epitope Retrieval (PIER) was used.