

Product datasheet for TA336654

p60 CAF1 (CHAF1B) Mouse Monoclonal Antibody [Clone ID: SS 24 1-68]

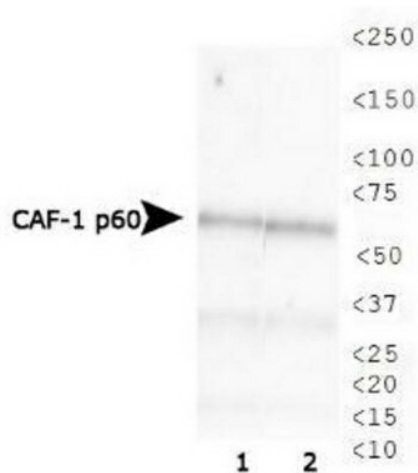
Product data:

Product Type:	Primary Antibodies
Clone Name:	SS 24 1-68
Applications:	IF, WB
Recommend Dilution:	WB: 1:1000, IF: 1:10-1:2000, IP: 0.1-1 ug
Reactivity:	Human, Mouse, Primate
Host:	Mouse
Isotype:	IgG1
Clonality:	Monoclonal
Immunogen:	Recombinant human CHAF1B [UniProt# Q13112]
Formulation:	Preservative: 0.05% Sodium Azide. Aliquot and store at -20C or -80C. Avoid freeze-thaw cycles.
Concentration:	This product is unpurified. The exact concentration of antibody is not quantifiable.
Purification:	Ascites
Predicted Protein Size:	60 kDa
Gene Name:	chromatin assembly factor 1 subunit B
Database Link:	NP_005432 Entrez Gene 110749 MouseEntrez Gene 8208 Human
Background:	Chromatin assembly factor 1 (CAF-1) is a member of the histone chaperone family. It is required for inheritance of epigenetically determined chromosomal states, and in vitro, it promotes the assembly of chromatin during DNA replication and DNA repair. CAF-1 is a complex of three subunits; p150, p60, and p48. This complex is localized to the nucleus of human cells. Both the composition and the biochemical activity of CAF-1 are conserved among human, yeast, and Drosophila.
Synonyms:	CAF-1; CAF-IP60; CAF1; CAF1A; CAF1P60; MPHOSPH7; MPP7
Note:	This CHAF1B (SS 24 1-68) antibody is useful for Immunoprecipitation, Western blot and Immunocytochemistry/Immunofluorescence. In WB a band can be seen at ~60 kDa.
Protein Families:	Druggable Genome, Transcription Factors



[View online »](#)

Product images:



Western Blot: CHAF1B Antibody (SS 24 1-68) [TA336654] - Analysis of CAF-1 p60 expression in 1) HeLa and 2) Cos7 whole cell lysates using TA336654.



Immunocytochemistry/Immunofluorescence: CHAF1B Antibody (SS 24 1-68) [TA336654] - Immunocytochemical staining of CAF-1 p60 in HeLa cells (Smith and Stillman 1991).