

Product datasheet for TA336802

RICTOR Mouse Monoclonal Antibody [Clone ID: 7B3]

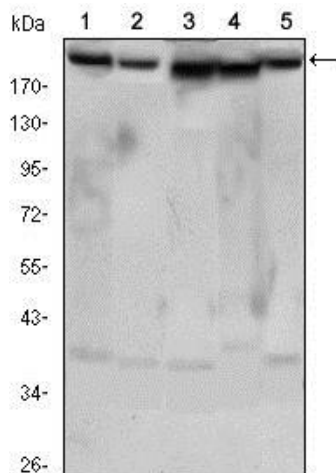
Product data:

Product Type:	Primary Antibodies
Clone Name:	7B3
Applications:	FC, IF, IHC, WB
Recommend Dilution:	WB: 1:500-1:2000, ELISA: 1:10000, FC: 1 ug per million cells, IF: 1:200-1:1000, IHC: 1:200-1:1000, IHC-P: 1:200-1:1000
Reactivity:	Human, Mouse, Primate
Host:	Mouse
Isotype:	IgG1
Clonality:	Monoclonal
Immunogen:	Purified recombinant fragment of human RICTOR expressed in E. coli. [UniProt# Q6R327]
Formulation:	PBS, 0.03% Sodium Azide. Store at 4C short term. Aliquot and store at -20C long term. Avoid freeze-thaw cycles.
Concentration:	1 mg/ml
Purification:	Ammonium sulfate precipitation
Predicted Protein Size:	192 kDa
Gene Name:	RPTOR independent companion of MTOR complex 2
Database Link:	NP_001272368 Entrez Gene 78757 Mouse Entrez Gene 253260 Human
Synonyms:	AVO3; hAVO3; PIA
Note:	This RICTOR (7B3) antibody is useful for Western blot, Flow Cytometry, Immunocytochemistry/Immunofluorescence, Immunohistochemistry on paraffin-embedded sections and ELISA. Use in Immunoprecipitation reported in scientific literature (PMID: 22952709)
Protein Pathways:	mTOR signaling pathway

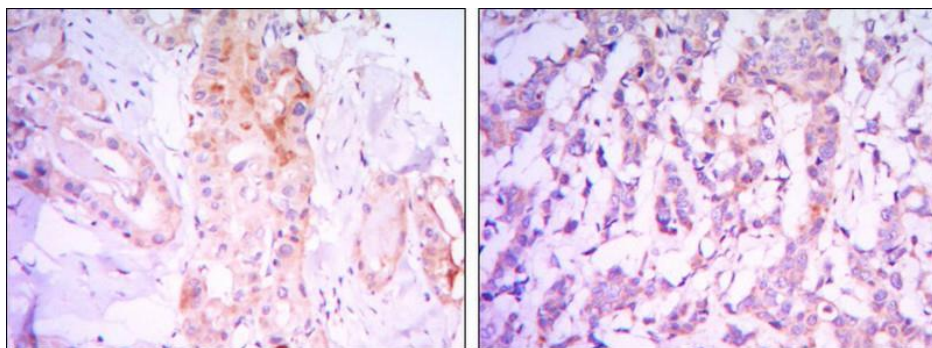


[View online »](#)

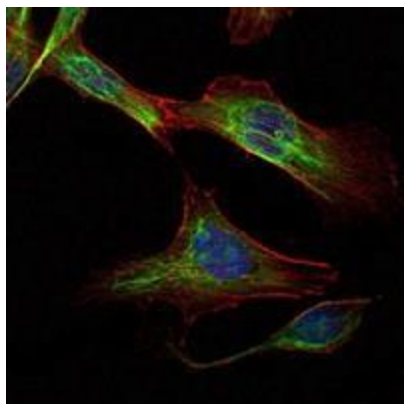
Product images:



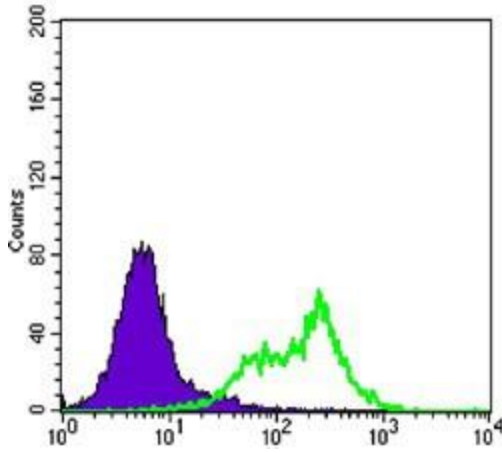
Western Blot: RICTOR Antibody (7B3) TA336802 - Western blot analysis using RICTOR mouse mAb against HeLa (1), PANC-1 (2), MOLT4 (3), HepG2 (4) and HEK293 (5) cell lysates.



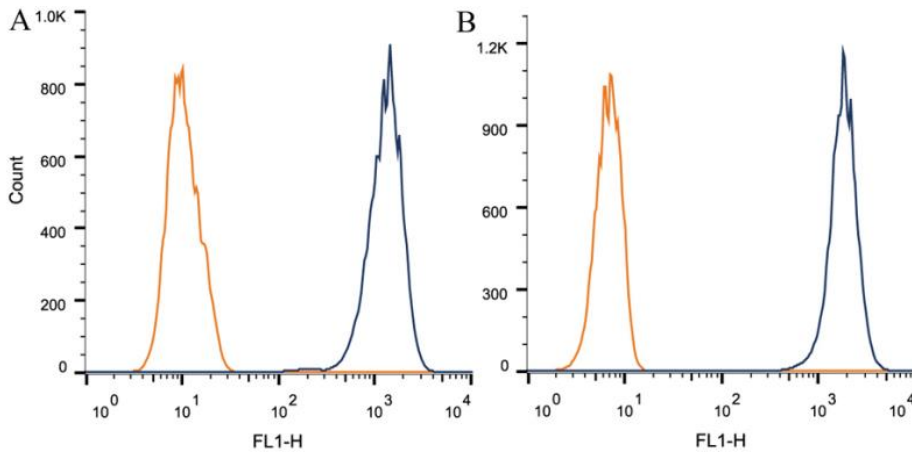
Immunohistochemistry-Paraffin: RICTOR Antibody (7B3) TA336802 - Immunohistochemical analysis of paraffin-embedded thyroid gland tissues (left) and human breast carcinoma (right) using RICTOR mouse mAb with DAB staining.



Immunocytochemistry/Immunofluorescence: RICTOR Antibody (7B3) TA336802 - Analysis of NIH/3T3 cells using RICTOR mouse mAb (green). Blue: DRAQ5 fluorescent DNA dye. Red: Actin filaments have been labeled with Alexa Fluor-555 phalloidin.



Flow Cytometry: RICTOR Antibody (7B3)
TA336802 - Flow cytometric analysis of HeLa cells using RICTOR mouse mAb (green) and negative control (purple).



Flow Cytometry: RICTOR Antibody (7B3)
TA336802 - Intracellular flow cytometric staining of 1×10^6 CHO (A) and HEK-293 (B) cells using RICTOR antibody (dark blue). Isotype control shown in orange. An antibody concentration of $1 \mu\text{g}/1 \times 10^6$ cells was used