

Product datasheet for **TA336909**

TCCR (IL27RA) Mouse Monoclonal Antibody [Clone ID: 34N4G11]

Product data:

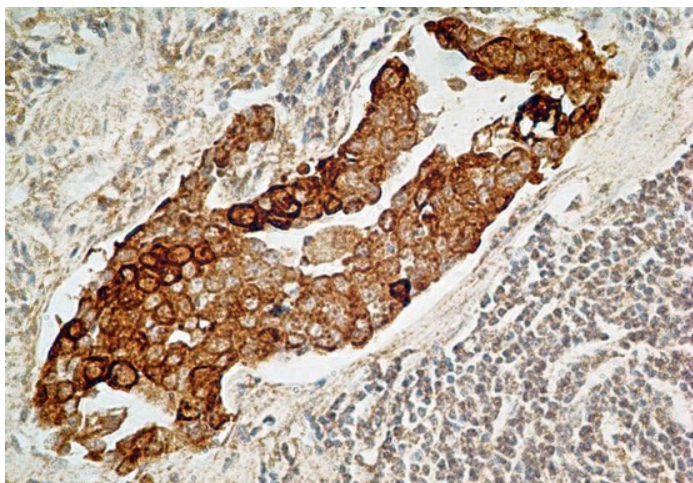
Product Type:	Primary Antibodies
Clone Name:	34N4G11
Applications:	FC, IHC
Recommend Dilution:	FC: 1 ug/ml, IHC-P: 5 ug/ml
Reactivity:	Human
Host:	Mouse
Isotype:	IgG2b, kappa
Clonality:	Monoclonal
Immunogen:	A portion of amino acids 200-250 of human IL-27R (WSX-1) was used as the immunogen for this antibody.
Formulation:	PBS containing 0.05% BSA, 0.05% Sodium Azide. Store at 4C short term. Aliquot and store at -20C long term. Avoid freeze-thaw cycles.
Concentration:	0.5 mg/ml
Purification:	Protein G purified
Gene Name:	interleukin 27 receptor subunit alpha
Database Link:	NP_004834 Entrez Gene 9466 Human
Background:	The IL-27 Receptor complex includes WSX-1 and gp130. IL-27R (WSX-1) is 65-70 kDa protein and is highly expressed in lymphoid tissues such as spleen, lymph nodes and peripheral blood leukocytes including CD4+ and CD8+ T cells, monocytes, DCs and NK cells (1-3). IL-27R activation includes STAT1, STAT3, STAT4 and STAT5, leading to differing pathway dependent effector activities. Like the IL12/IL-12R complex, the IL-27/IL-27R complex also has Th1 enhancing activity especially enhancement of IFN γ production by naive T cells and NK cells (1). IL-27R mediates downregulation of Th2 activity by findings that IL-27R deficiencies mitigate inflammatory pathology in helminthic infections in mice (1, 4, 5). The possibility of utilizing IL-27R as a target for autoimmune inflammatory diseases, especially of mucosal surfaces as in human IBD, is under investigation, measured by Th2 type cytokines and bolstered through Th2
Synonyms:	CRL1; IL-27RA; IL27R; TCCR; WSX1; zcytor1



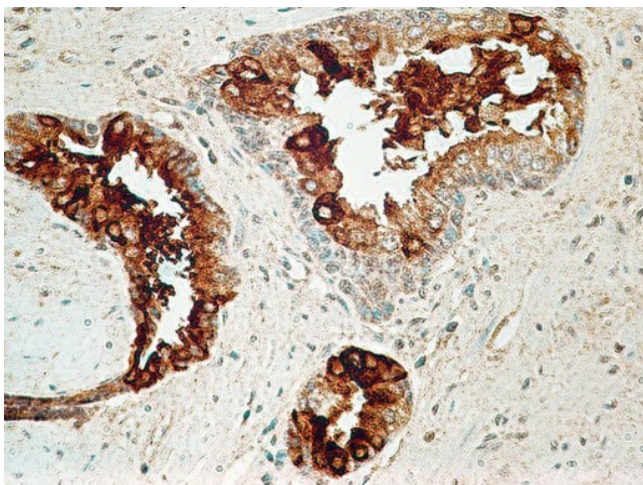
View online »

Protein Families: Druggable Genome, Transmembrane

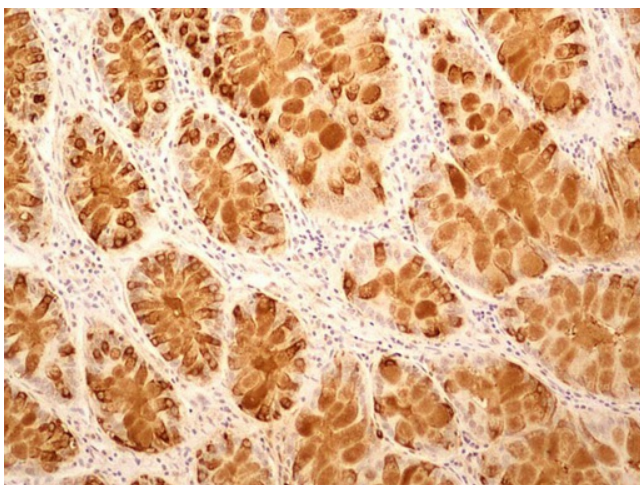
Product images:



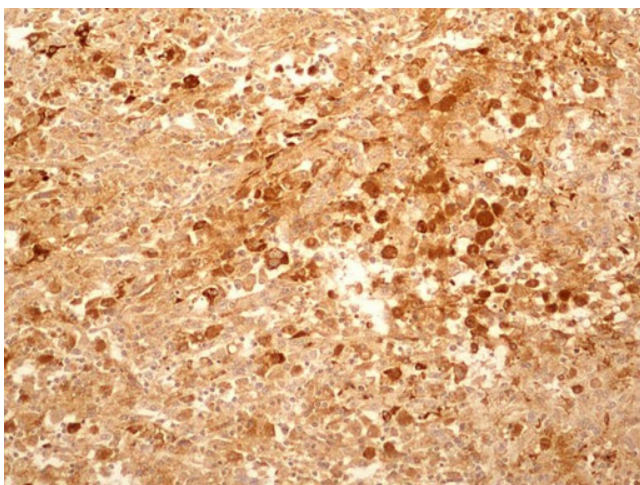
Immunohistochemistry-Paraffin: IL27RA Antibody (34N4G11) TA336909 - Adenocarcinoma of the stomach probed with IL-27R antibody at 5 ug/ml.



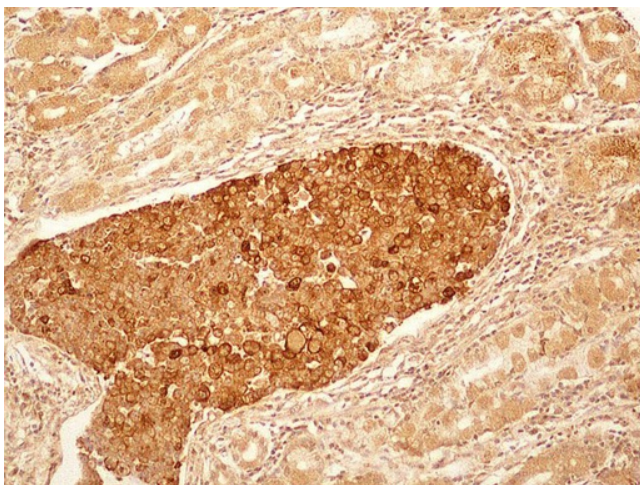
Immunohistochemistry-Paraffin: IL27RA Antibody (34N4G11) TA336909 - Formalin-fixed, paraffin-embedded human prostate probed with IL-27R antibody at 5 ug/ml.



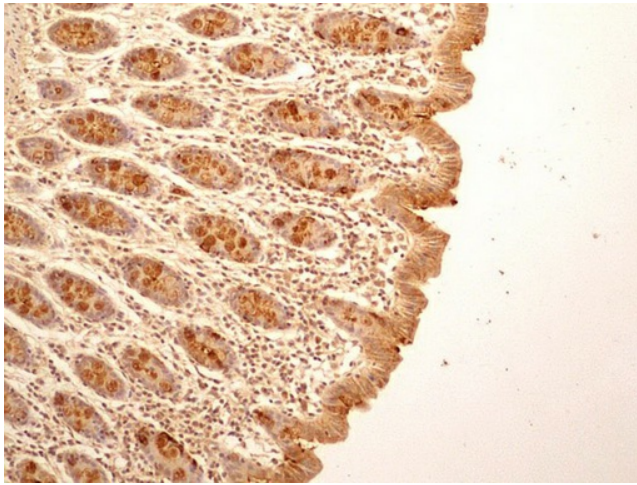
Immunohistochemistry-Paraffin: IL27RA Antibody (34N4G11) TA336909 - IHC-P detection of IL27RA protein in a section of human colo-rectal cancer tissue using IL27RA antibody (34N4G11) at a concentration of 5ug/ml. The cancer cells showed specific positive



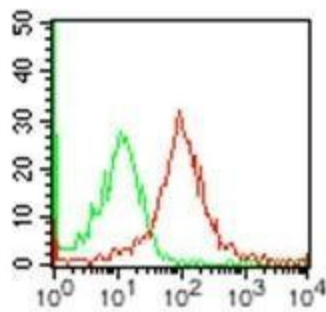
Immunohistochemistry-Paraffin: IL27RA Antibody (34N4G11) TA336909 - IHC-P detection of IL27RA protein in a section of human renal/kidney cancer tissue using IL27RA antibody (34N4G11) at a concentration of 5ug/ml. The representative image shows membrane-



Immunohistochemistry-Paraffin: IL27RA Antibody (34N4G11) TA336909 - IHC-P detection of IL27RA protein in a section of human stomach cancer tissue using IL27RA antibody (34N4G11) at a concentration of 5ug/ml. The cancer cells showed intense membrane-cyto



Immunohistochemistry-Paraffin: IL27RA Antibody (34N4G11) TA336909 - IHC-P detection of IL27RA protein in a section of normal human colon tissue using IL27RA antibody (34N4G11) at a concentration of 5ug/ml. Intense membrane with cytoplasmic staining was



Flow Cytometry: IL27RA Antibody (34N4G11) TA336909 - Surface staining on human peripheral blood monocytes using IL-27R antibody at 1 ug/10⁶ cells (red represents specific antibody and green represents isotype control). APC-conjugated goat anti-mouse Ig