

## Product datasheet for TA336916

### YAP1 Mouse Monoclonal Antibody [Clone ID: 1A12]

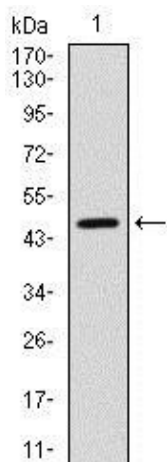
#### Product data:

Product Type:	Primary Antibodies
Clone Name:	1A12
Applications:	ELISA, FC, IHC, WB
Recommend Dilution:	WB: 1:500-1:2000, ELISA: 1:10000, FC: 1:200-1:400, IHC-P: 1:200-1:1000
Reactivity:	Human
Host:	Mouse
Isotype:	IgG1
Clonality:	Monoclonal
Immunogen:	Purified recombinant fragment of human YAP1 expressed in E. coli. [UniProt# P46937]
Formulation:	PBS, 0.03% Sodium Azide. Store at 4C short term. Aliquot and store at -20C long term. Avoid freeze-thaw cycles.
Concentration:	1 mg/ml
Purification:	Ammonium sulfate precipitation
Gene Name:	Yes associated protein 1
Database Link:	<a href="#">NP_006097 Entrez Gene 10413 Human</a>
Background:	This gene encodes the human ortholog of chicken YAP protein which binds to the SH3 domain of the Yes proto-oncogene product. This protein contains a WW domain that is found in various structural, regulatory and signaling molecules in yeast, nematode, and mammals, and may be involved in protein-protein interaction.
Synonyms:	COB1; YAP; YAP2; YAP65; YKI
Note:	This YAP1 (1A12) antibody is useful for Western blot, Immunohistochemistry on paraffin-embedded sections, Flow Cytometry and ELISA.
Protein Families:	Druggable Genome

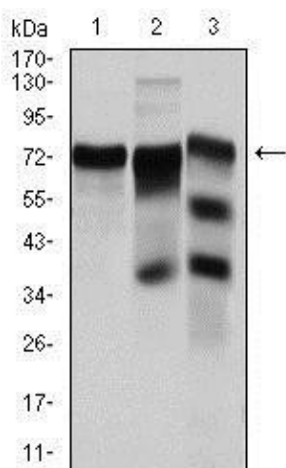


[View online »](#)

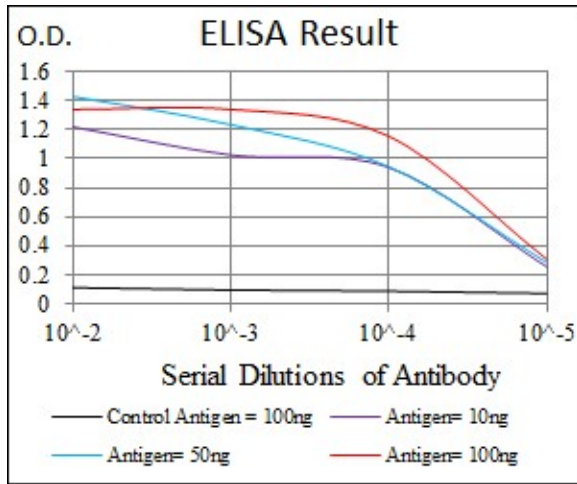
## Product images:



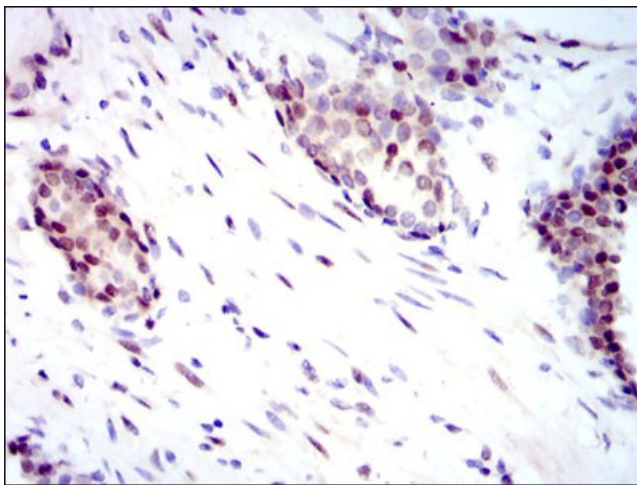
Western Blot: YAP1 Antibody (1A12) TA336916 - Western blot analysis using YAP1 mAb against human YAP1 (AA: 250-447) recombinant protein. (Expected MW is 54.4 kDa)



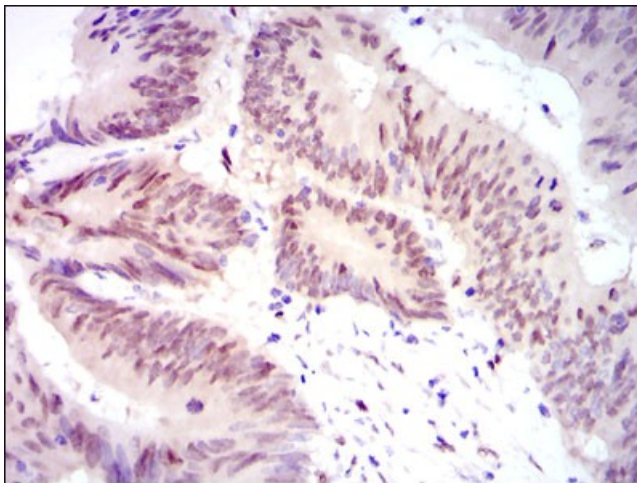
Western Blot: YAP1 Antibody (1A12) TA336916 - Western blot analysis using YAP1 mouse mAb against HeLa (1), C6 (2) and Cos7 (3) cell lysate.



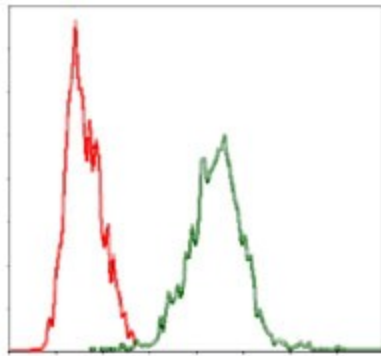
ELISA: YAP1 Antibody (1A12) TA336916 - Red: Control Antigen (100ng); Purple: Antigen (10ng); Green: Antigen (50ng); Blue: Antigen (100ng).



Immunohistochemistry-Paraffin: YAP1 Antibody (1A12) TA336916 - Immunohistochemical analysis of paraffin-embedded prostate cancer tissues using YAP1 mouse mAb with DAB staining.



Immunohistochemistry-Paraffin: YAP1 Antibody (1A12) TA336916 - Immunohistochemical analysis of paraffin-embedded rectum cancer tissues using YAP1 mouse mAb with DAB staining.



Flow Cytometry: YAP1 Antibody (1A12) TA336916  
- Flow cytometric analysis of HeLa cells using YAP1 mouse mAb (green) and negative control (red).