

## Product datasheet for TA336948

### DRP1 (DNM1L) Mouse Monoclonal Antibody [Clone ID: 4E11B11]

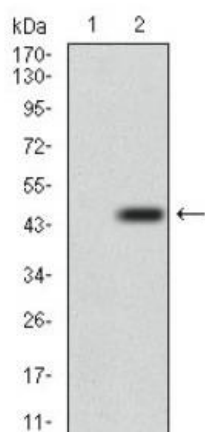
#### Product data:

Product Type:	Primary Antibodies
Clone Name:	4E11B11
Applications:	IHC, WB
Recommend Dilution:	WB: 1:500 - 1:2000, ELISA: 1:10000, IHC: 1:200 - 1:1000, IHC-P: 1:200 - 1:1000
Reactivity:	Human
Host:	Mouse
Isotype:	IgG1
Clonality:	Monoclonal
Immunogen:	Partial recombinant human DRP1 (between residues 100-250) expressed in E. coli. [UniProt O00429]
Formulation:	PBS, 0.03% Sodium Azide. Store at 4C short term. Aliquot and store at -20C long term. Avoid freeze-thaw cycles.
Concentration:	1 mg/ml
Purification:	Ammonium sulfate precipitation
Gene Name:	dynamin 1-like
Database Link:	<a href="#">NP_036192 Entrez Gene 10059 Human</a>
Background:	A human dynamin-related protein, DRP1 contributes to mitochondrial division in mammalian cells. It plays this important role in mitochondrial fission at steady state and during apoptosis. DRP1 is required for proper cellular distribution of mitochondria, and in mutant neurons, mitochondria are largely absent from synapses, thus providing a genetic tool to assess the role of mitochondria at synapses.
Synonyms:	DLP1; DRP1; DVLP; DYMPLE; EMPF; EMPF1; HDYNIV
Protein Pathways:	Endocytosis, Fc gamma R-mediated phagocytosis

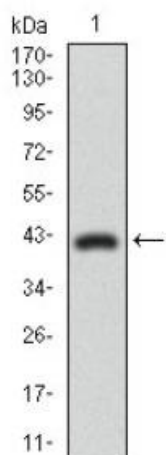


[View online »](#)

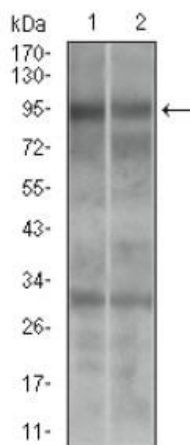
## Product images:



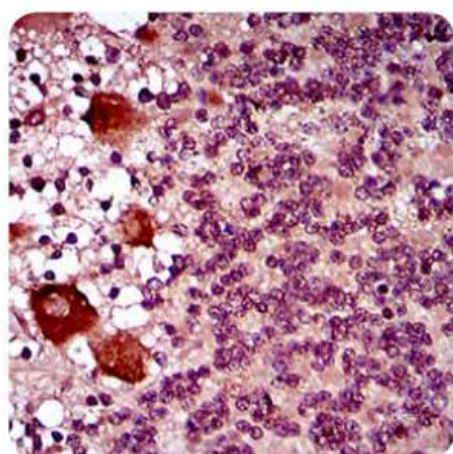
Western Blot: DRP1 Antibody (4E11B11) TA336948 - Western blot analysis using DRP1 mAb in (1) HEK293 and (2) DRP1 hlgGfc transfected HEK293 cell lysate.



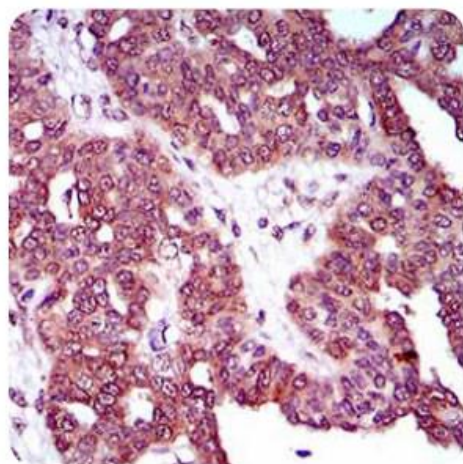
Western Blot: DRP1 Antibody (4E11B11) TA336948 - Western blot analysis using DRP1 mAb in human DRP1 recombinant protein. (Expected MW is 41.8 kDa)



Western Blot: DRP1 Antibody (4E11B11) TA336948 - Western blot analysis using DRP1 mouse mAb in (1) A549 and (2) Jurkat cell lysate.



Immunohistochemistry: DRP1 Antibody (4E11B11) TA336948 - IHC analysis of paraffin-embedded human cerebellum tissues using DRP1 mouse mAb with DAB staining.



Immunohistochemistry: DRP1 Antibody (4E11B11) TA336948 - IHC analysis of paraffin-embedded human ovarian cancer tissues using DRP1 mouse mAb with DAB staining.