

## Product datasheet for **TA346890**

### **BAG1 Mouse Monoclonal Antibody [Clone ID: 2C12-A8-1D7]**

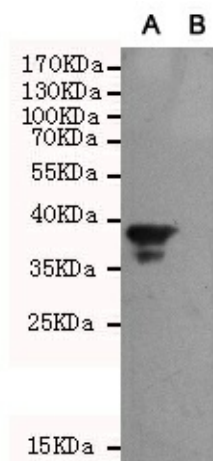
#### **Product data:**

<b>Product Type:</b>	Primary Antibodies
<b>Clone Name:</b>	2C12-A8-1D7
<b>Applications:</b>	WB
<b>Recommend Dilution:</b>	WB: 1:1000
<b>Host:</b>	Mouse
<b>Isotype:</b>	IgG1
<b>Clonality:</b>	Monoclonal
<b>Immunogen:</b>	The immunogen for BAG1 antibody: purified recombinant human Bag1 protein fragments expressed in E.coli.
<b>Formulation:</b>	Purified mouse monoclonal antibody in PBS(pH 7.4) containing with 0.02% sodium azide and 50% glycerol.
<b>Purification:</b>	Affinity purified
<b>Predicted Protein Size:</b>	52,46,33 kDa
<b>Gene Name:</b>	BCL2 associated athanogene 1
<b>Database Link:</b>	<a href="#">NP_004314 Entrez Gene 573 Human</a>
<b>Background:</b>	The oncogene BCL2 is a membrane protein that blocks a step in a pathway leading to apoptosis or programmed cell death. The protein encoded by this gene binds to BCL2 and is referred to as BCL2-associated athanogene. It enhances the anti-apoptotic effects of BCL2 and represents a link between growth factor receptors and anti-apoptotic mechanisms. Multiple protein isoforms are encoded by this mRNA through the use of a non-AUG (CUG) initiation codon, and three alternative downstream AUG initiation codons. A related pseudogene has been defined on chromosome X. [provided by RefSeq, Feb 2010]
<b>Synonyms:</b>	BAG-1; HAP; RAP46
<b>Protein Families:</b>	Druggable Genome



[View online »](#)

## Product images:



Western blot analysis of extracts from CHO-K1 cells, transfected with a human pEGFP-C1-BAG1 construct (A) or transfected with a human pEGFP-C1 construct (B), using Bag1 mouse mAb (1:1000 diluted).