

Product datasheet for TA346916

CHD3 Mouse Monoclonal Antibody [Clone ID: 7F6-G2-E5]

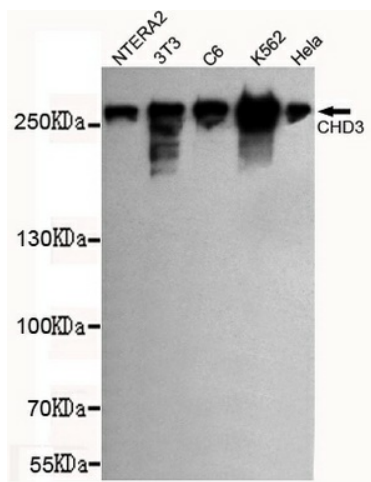
Product data:

Product Type:	Primary Antibodies
Clone Name:	7F6-G2-E5
Applications:	IF, IP, WB
Recommend Dilution:	WB: 1:1000, IF: 1:400
Reactivity:	Human, Mouse, Rat
Host:	Mouse
Isotype:	IgG1
Clonality:	Monoclonal
Immunogen:	The immunogen for CHD3 antibody: purified recombinant human CHD3 (C-terminus) protein fragments expressed in E.coli.
Formulation:	ascites
Predicted Protein Size:	260 kDa
Gene Name:	chromodomain helicase DNA binding protein 3
Database Link:	NP_001005271 Entrez Gene 216848 Mouse Entrez Gene 303241 Rat Entrez Gene 1107 Human
Background:	This gene encodes a member of the CHD family of proteins which are characterized by the presence of chromo (chromatin organization modifier) domains and SNF2-related helicase/ATPase domains. This protein is one of the components of a histone deacetylase complex referred to as the Mi-2/NuRD complex which participates in the remodeling of chromatin by deacetylating histones. Chromatin remodeling is essential for many processes including transcription. Autoantibodies against this protein are found in a subset of patients with dermatomyositis. Three alternatively spliced transcripts encoding different isoforms have been described.
Synonyms:	Mi-2a; Mi2-ALPHA; ZFH
Protein Families:	Druggable Genome

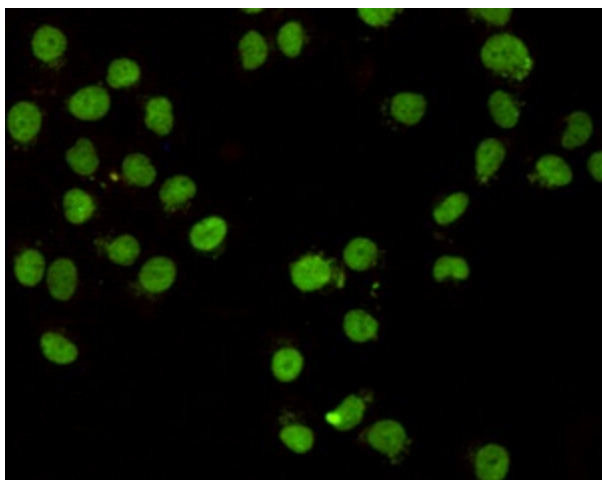


[View online »](#)

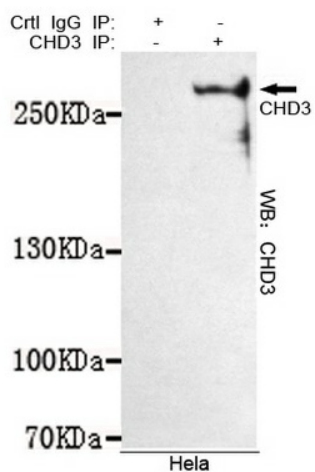
Product images:



Western blot detection of CHD3 (C-terminus) in NTERA2, 3T3, C6, K562 and HeLa cell lysates using CHD3 (C-terminus) mouse mAb (1:1000 diluted). Predicted band size: 260kDa. Observed band size: 260kDa.



Immunocytochemistry staining of HeLa cells fixed with -20°C Methanol and using CHD3 (C-terminus) mouse mAb (dilution 1:400).



Immunoprecipitation analysis of HeLa cell lysates using CHD3 mouse mAb.