

Product datasheet for TA347015

PDHA1 Mouse Monoclonal Antibody [Clone ID: 3H2-F8-B5]

Product data:

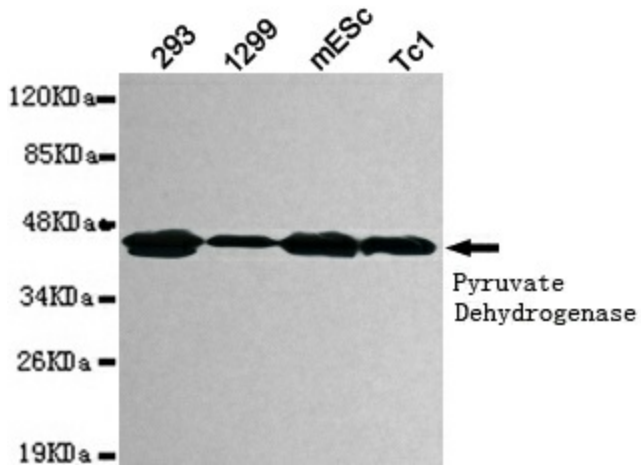
Product Type:	Primary Antibodies
Clone Name:	3H2-F8-B5
Applications:	IF, WB
Recommend Dilution:	WB: 1:1000, IF: 1:100
Reactivity:	Human, Mouse
Host:	Mouse
Isotype:	IgG1
Clonality:	Monoclonal
Immunogen:	The immunogen for PDHA1 antibody: purified recombinant human Pyruvate Dehydrogenase protein fragments expressed in E.coli.
Formulation:	Purified mouse monoclonal in buffer containing 0.1M Tris-Glycine (pH 7.4, 150 mM NaCl) with 0.02% sodium azide, 50% glycerol
Purification:	Affinity purified
Predicted Protein Size:	43 kDa
Gene Name:	pyruvate dehydrogenase (lipoamide) alpha 1
Database Link:	NP_000275 Entrez Gene 18597 Mouse Entrez Gene 5160 Human
Background:	The pyruvate dehydrogenase (PDH) complex is a nuclear-encoded mitochondrial multienzyme complex that catalyzes the overall conversion of pyruvate to acetyl-CoA and CO ₂ , and provides the primary link between glycolysis and the tricarboxylic acid (TCA) cycle. The PDH complex is composed of multiple copies of three enzymatic components: pyruvate dehydrogenase (E1), dihydrolipoamide acetyltransferase (E2) and lipoamide dehydrogenase (E3). The E1 enzyme is a heterotetramer of two alpha and two beta subunits. This gene encodes the E1 alpha 1 subunit containing the E1 active site, and plays a key role in the function of the PDH complex. Mutations in this gene are associated with pyruvate dehydrogenase E1-alpha deficiency and X-linked Leigh syndrome. Alternatively spliced transcript variants encoding different isoforms have been found for this gene.
Synonyms:	PDHA; PDHAD; PDHCE1A; PHE1A
Protein Families:	Druggable Genome



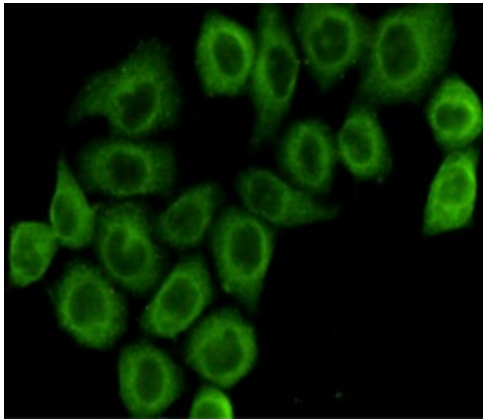
[View online »](#)

Protein Pathways: Butanoate metabolism, Citrate cycle (TCA cycle), Glycolysis / Gluconeogenesis, Metabolic pathways, Pyruvate metabolism, Valine, leucine and isoleucine biosynthesis

Product images:



Western blot detection of pyruvate dehydrogenase (lipoamide) alpha 1 in 293, 1299, mESC and Tc1 cell lysates using pyruvate dehydrogenase (lipoamide) alpha 1 mouse mAb (1:1000 diluted). Predicted band size: 43KDa. Observed band size: 43KDa.



Immunocytochemistry staining of HeLa cells fixed with 4% Paraformaldehyde and using anti-pyruvate dehydrogenase (lipoamide) alpha 1 mouse mAb (dilution 1:100).