

Product datasheet for TA347025

PPP4C Mouse Monoclonal Antibody [Clone ID: 2F11-D10-G4]

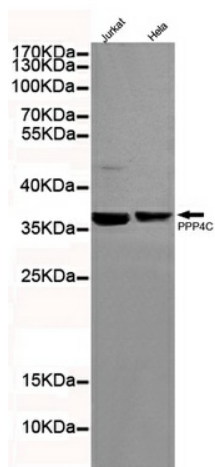
Product data:

Product Type:	Primary Antibodies
Clone Name:	2F11-D10-G4
Applications:	IF, IHC, WB
Recommend Dilution:	WB: 1:200, IF: 1:200
Reactivity:	Human
Host:	Mouse
Isotype:	IgG2a
Clonality:	Monoclonal
Immunogen:	The immunogen for PPP4C antibody: purified recombinant human Protein Phosphatase 4C protein fragments expressed in E.coli.
Formulation:	Purified mouse monoclonal in PBS(pH 7.4) containing with 0.02% sodium azide and 50% glycerol.
Purification:	Affinity purified
Predicted Protein Size:	34 kDa
Gene Name:	protein phosphatase 4 catalytic subunit
Database Link:	NP_002711 Entrez Gene 5531 Human
Background:	Protein phosphatase 4C may be involved in microtubule organization. It binds 1 iron ion and 1 manganese ion per subunit. PP4 consists of a catalytic subunit PPP4C and a regulatory subunit. PPP4R1 and belongs to the PPP phosphatase family, PP X subfamily.
Synonyms:	PP-X; PP4; PP4C; PPH3; PPP4; PPX
Protein Families:	Druggable Genome, Phosphatase

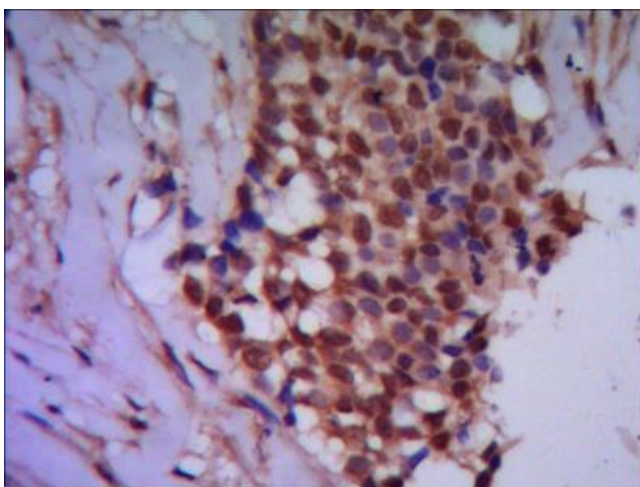


[View online »](#)

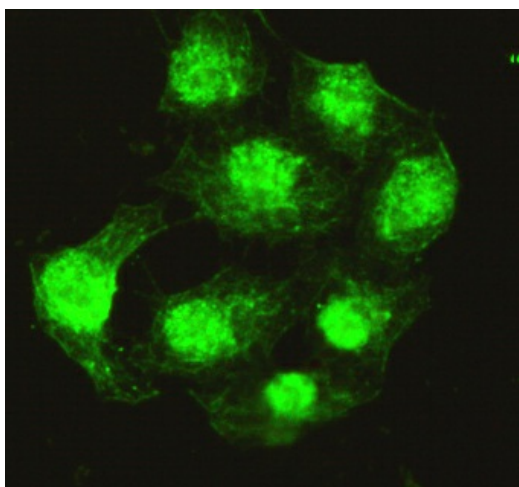
Product images:



Western blot detection of Protein Phosphatase 4C in HeLa and Jurkat cell lysates using Protein Phosphatase 4C mouse mAb (1:200 diluted). Predicted band size: 34KDa. Observed band size: 34KDa.



IHC of paraffin-embedded human breast cancer using anti-Protein Phosphatase 4C mouse mAb diluted 1/500-1/1000.



Immunocytochemistry of HeLa cells using anti-Protein Phosphatase 4C mouse mAb diluted 1:200.