

## Product datasheet for TA347040

### RBBP5 Mouse Monoclonal Antibody [Clone ID: 1C9-1C9-H10]

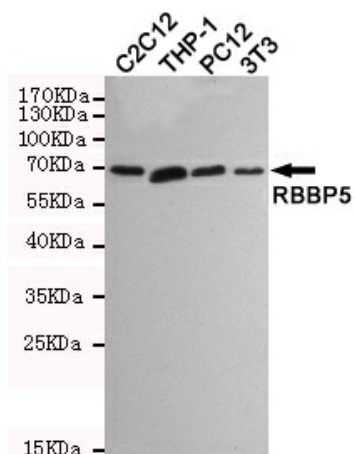
#### Product data:

Product Type:	Primary Antibodies
Clone Name:	1C9-1C9-H10
Applications:	IF, WB
Recommend Dilution:	WB: 1:1000, IF: 1:100
Reactivity:	Human, Mouse, Rat
Host:	Mouse
Isotype:	IgG2a
Clonality:	Monoclonal
Immunogen:	The immunogen for RBBP5 antibody: purified recombinant human RBBP5 protein fragments expressed in E.coli.
Formulation:	PBS(pH 7.4) containing with 0.02% sodium azide and 50% glycerol.
Gene Name:	RB binding protein 5, histone lysine methyltransferase complex subunit
Database Link:	<a href="#">NP_005048</a> <a href="#">Entrez Gene 213464</a> <a href="#">MouseEntrez Gene 304794</a> <a href="#">RatEntrez Gene 5929</a> <a href="#">Human</a>
Background:	This gene encodes a ubiquitously expressed nuclear protein which belongs to a highly conserved subfamily of WD-repeat proteins. The encoded protein binds directly to retinoblastoma protein, which regulates cell proliferation. It interacts preferentially with the underphosphorylated retinoblastoma protein via the E1A-binding pocket B. Three alternatively spliced transcript variants that encode different protein isoforms have been described for this gene.
Synonyms:	RBQ3; SWD1
Protein Families:	Druggable Genome

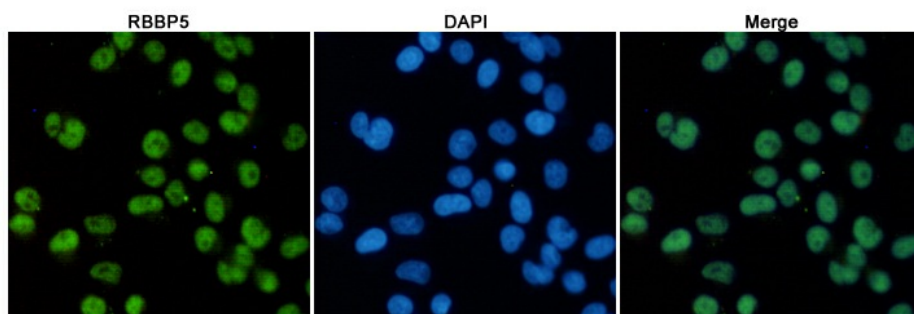


[View online »](#)

## Product images:



Western blot detection of RBBP5 in C2C12, THP-1, PC12 and 3T3 cell lysates using RBBP5 mouse mAb (1:1000 diluted). Predicted band size: 70 kDa. Observed band size: 70 kDa.



Immunofluorescent analysis of HeLa cells fixed with 4% Paraformaldehyde and using anti-RBBP5 mouse mAb (dilution 1:100). DAPI was used to stain nucleus (blue).