

## Product datasheet for TA347048

### SMAD5 Mouse Monoclonal Antibody [Clone ID: 4B10-B10-B6]

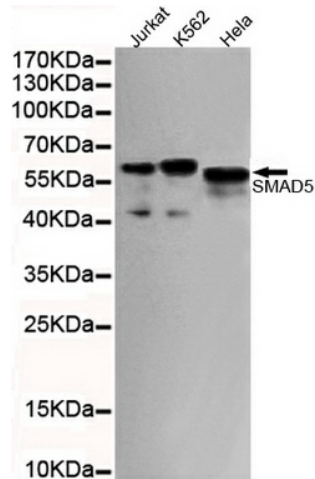
#### Product data:

Product Type:	Primary Antibodies
Clone Name:	4B10-B10-B6
Applications:	FC, IF, WB
Recommend Dilution:	WB: 1:1000, IF: 1:75, FC: 1:100
Reactivity:	Human
Host:	Mouse
Isotype:	IgG1
Clonality:	Monoclonal
Immunogen:	The immunogen for SMAD5 antibody: purified recombinant human SMAD5 (C-terminus) protein fragments expressed in E.coli.
Formulation:	Purified mouse monoclonal in buffer containing 0.1M Tris-Glycine (pH 7.4, 150 mM NaCl) with 0.02% sodium azide, 50% glycerol
Purification:	Affinity purified
Predicted Protein Size:	60 kDa
Gene Name:	SMAD family member 5
Database Link:	<a href="#">NP_001001420 Entrez Gene 4090 Human</a>
Background:	SMAD5 is a member of the Mothers Against Dpp (MAD)-related family of proteins. It is a receptor-regulated SMAD (R-SMAD), and acts as an intracellular signal transducer for the transforming growth factor beta superfamily. SMAD5 is activated through serine phosphorylation by BMP (bone morphogenetic proteins) type 1 receptor kinase. It is cytoplasmic in the absence of its ligand and migrates into the nucleus upon phosphorylation and complex formation with SMAD4. Here the SMAD5/SMAD4 complex stimulates the transcription of target genes.
Synonyms:	DWFC; JV5-1; MADH5
Protein Families:	Cancer stem cells, Druggable Genome, ES Cell Differentiation/IPS, Stem cell relevant signaling - JAK/STAT signaling pathway, Stem cell relevant signaling - TGFb/BMP signaling pathway, Transcription Factors
Protein Pathways:	TGF-beta signaling pathway

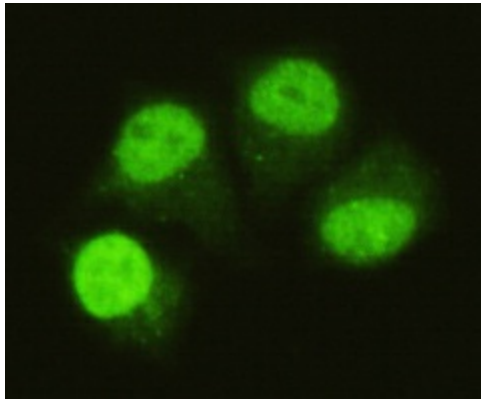


[View online »](#)

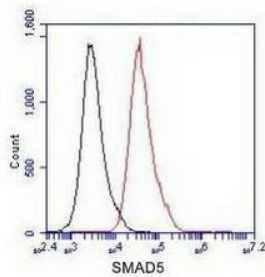
## Product images:



Western blot detection of SMAD5 (C-terminus) in HeLa, Jurkat and K562 cell lysates using SMAD5 (C-terminus) mouse mAb (1:1000 diluted). Predicted band size: 52KDa. Observed band size: 60KDa.



Immunocytochemistry of HeLa cells using anti-SMAD5 (C-terminus) mouse mAb diluted 1:75.



Flow Cytometry analysis of Jurkat cells stained with SMAD5 (red, 1/100 dilution), followed by FITC-conjugated goat anti-mouse IgG. Black line histogram represents the isotype control, normal mouse IgG.