

Product datasheet for TA501373

eIF2 alpha (EIF2S1) Mouse Monoclonal Antibody [Clone ID: OTI1B10]

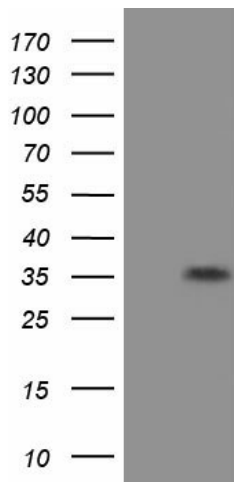
Product data:

| | |
|-------------------------|---|
| Product Type: | Primary Antibodies |
| Clone Name: | OTI1B10 |
| Applications: | IHC, WB |
| Recommend Dilution: | WB 1:1000~2000, IHC 1:50 |
| Reactivity: | Human, Monkey, Rat, Dog |
| Host: | Mouse |
| Isotype: | IgG1 |
| Clonality: | Monoclonal |
| Immunogen: | Full length human recombinant protein of human EIF2S1 (NP_004085) produced in HEK293T cell. |
| Formulation: | PBS (pH 7.3) containing 1% BSA, 50% glycerol and 0.02% sodium azide. |
| Concentration: | 0.58 mg/ml |
| Purification: | Purified from mouse ascites fluids or tissue culture supernatant by affinity chromatography (protein A/G) |
| Predicted Protein Size: | 35.9 kDa |
| Gene Name: | eukaryotic translation initiation factor 2 subunit alpha |
| Database Link: | NP_004085 Entrez Gene 54318 RatEntrez Gene 480361 DogEntrez Gene 710150 MonkeyEntrez Gene 1965 Human |
| Background: | The translation initiation factor EIF2 catalyzes the first regulated step of protein synthesis initiation, promoting the binding of the initiator tRNA to 40S ribosomal subunits. Binding occurs as a ternary complex of methionyl-tRNA, EIF2, and GTP. EIF2 is composed of 3 nonidentical subunits, the 36-kD EIF2-alpha subunit (EIF2S1), the 38-kD EIF2-beta subunit (EIF2S2; MIM 603908), and the 52-kD EIF2-gamma subunit (EIF2S3; MIM 300161). The rate of formation of the ternary complex is modulated by the phosphorylation state of EIF2-alpha (Ernst et al., 1987 [PubMed 2948954]). [supplied by OMIM] |
| Synonyms: | EIF-2; EIF-2A; EIF-2alpha; EIF2; EIF2A |

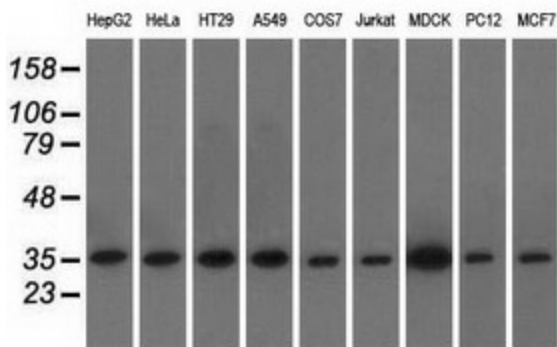


[View online »](#)

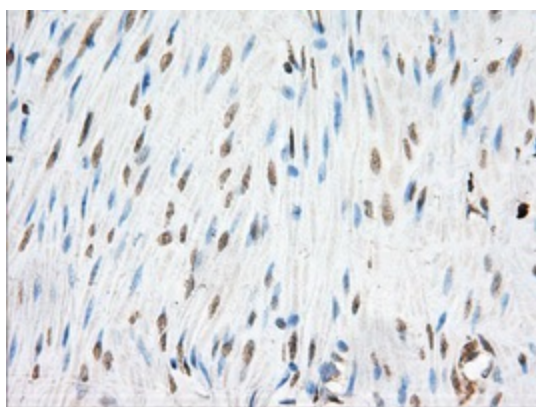
Product images:



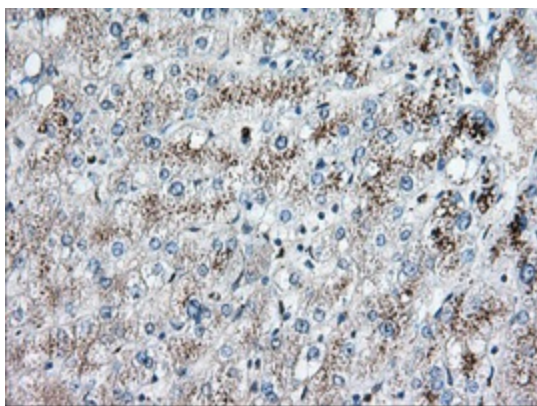
HEK293T cells were transfected with the pCMV6-ENTRY control (Left lane) or pCMV6-ENTRY EIF2S1 ([RC200368], Right lane) cDNA for 48 hrs and lysed. Equivalent amounts of cell lysates (5 ug per lane) were separated by SDS-PAGE and immunoblotted with anti-EIF2S1. Positive lysates [LY401321] (100ug) and [LC401321] (20ug) can be purchased separately from OriGene.



Western blot analysis of extracts (35ug) from 9 different cell lines by using anti-EIF2S1 monoclonal antibody.



Immunohistochemical staining of paraffin-embedded Human colon tissue within the normal limits using anti-EIF2S1 mouse monoclonal antibody. (Heat-induced epitope retrieval by 10mM citric buffer, pH6.0, 100°C for 10min, TA501373, Dilution 1:50)



Immunohistochemical staining of paraffin-embedded Human liver tissue within the normal limits using anti-EIF2S1 mouse monoclonal antibody. (Heat-induced epitope retrieval by 10mM citric buffer, pH6.0, 100°C for 10min, TA501373, Dilution 1:50)