

Product datasheet for TA501627

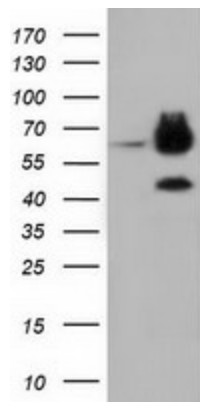
EPHX2 Mouse Monoclonal Antibody [Clone ID: OT11H5]

Product data:

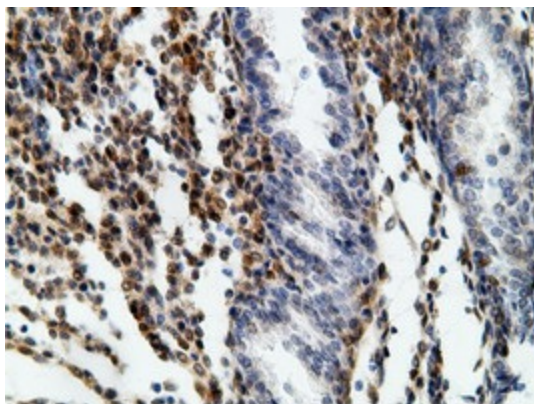
| | |
|-------------------------|--|
| Product Type: | Primary Antibodies |
| Clone Name: | OT11H5 |
| Applications: | IHC, WB |
| Recommend Dilution: | WB 1:2000, IHC 1:150 |
| Reactivity: | Human |
| Host: | Mouse |
| Isotype: | IgG1 |
| Clonality: | Monoclonal |
| Immunogen: | Full length human recombinant protein of human EPHX2 (NP_001970) produced in HEK293T cell. |
| Formulation: | PBS (PH 7.3) containing 1% BSA, 50% glycerol and 0.02% sodium azide. |
| Concentration: | 1 mg/ml |
| Purification: | Purified from mouse ascites fluids or tissue culture supernatant by affinity chromatography (protein A/G) |
| Predicted Protein Size: | 62.4 kDa |
| Gene Name: | epoxide hydrolase 2 |
| Database Link: | NP_001970 Entrez Gene 2053 Human |
| Background: | This gene encodes a member of the epoxide hydrolase family. The protein, found in both the cytosol and peroxisomes, binds to specific epoxides and converts them to the corresponding dihydrodiols. Mutations in this gene have been associated with familial hypercholesterolemia. Alternate transcriptional splice variants of this gene have been observed but have not been thoroughly characterized. [provided by RefSeq] |
| Synonyms: | CEH; SEH |
| Protein Pathways: | Arachidonic acid metabolism, Metabolic pathways |



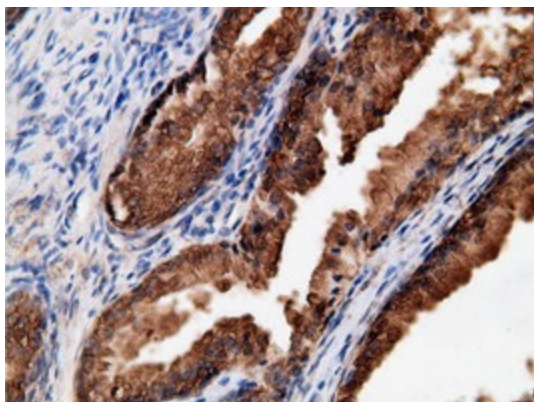
[View online »](#)

Product images:

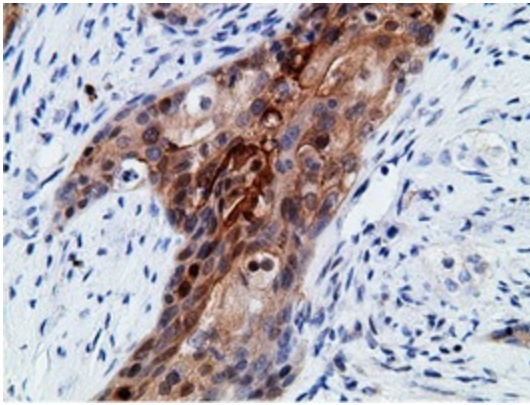
HEK293T cells were transfected with the pCMV6-ENTRY control (Left lane) or pCMV6-ENTRY EPHX2 ([RC202489], Right lane) cDNA for 48 hrs and lysed. Equivalent amounts of cell lysates (5 ug per lane) were separated by SDS-PAGE and immunoblotted with anti-EPHX2. Positive lysates [LY419612] (100ug) and [LC419612] (20ug) can be purchased separately from OriGene.



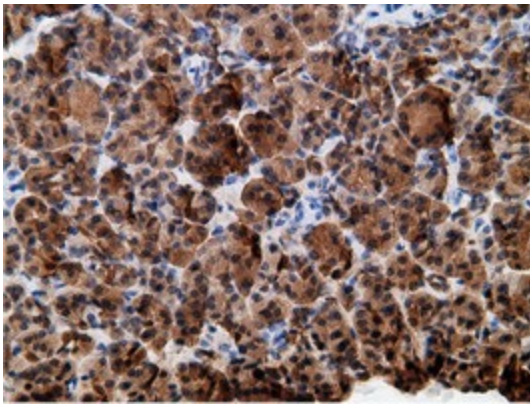
Immunohistochemical staining of paraffin-embedded Carcinoma of Human bladder tissue using anti-EPHX2 mouse monoclonal antibody. (Heat-induced epitope retrieval by 10mM citric buffer, pH6.0, 100°C for 10min, TA501627)



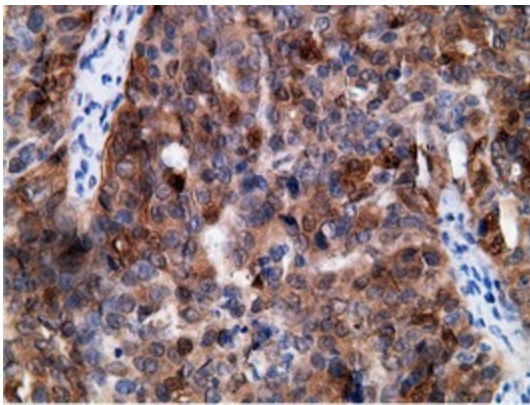
Immunohistochemical staining of paraffin-embedded Human prostate tissue within the normal limits using anti-EPHX2 mouse monoclonal antibody. (Heat-induced epitope retrieval by 10mM citric buffer, pH6.0, 100°C for 10min, TA501627)



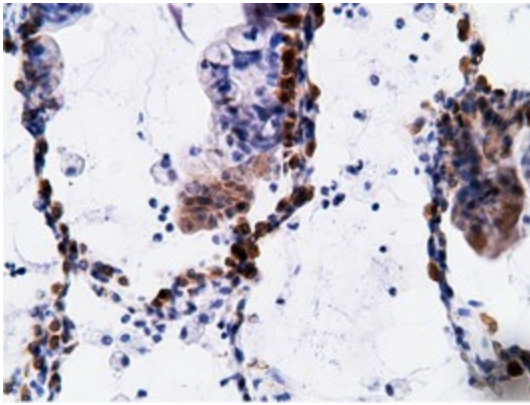
Immunohistochemical staining of paraffin-embedded Carcinoma of Human pancreas tissue using anti-EPHX2 mouse monoclonal antibody. (Heat-induced epitope retrieval by 10mM citric buffer, pH6.0, 100°C for 10min, TA501627)



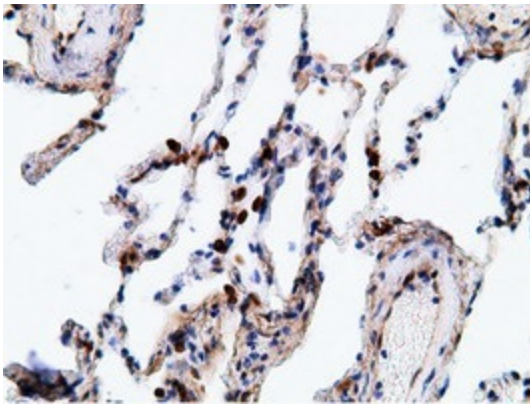
Immunohistochemical staining of paraffin-embedded Human pancreas tissue within the normal limits using anti-EPHX2 mouse monoclonal antibody. (Heat-induced epitope retrieval by 10mM citric buffer, pH6.0, 100°C for 10min, TA501627)



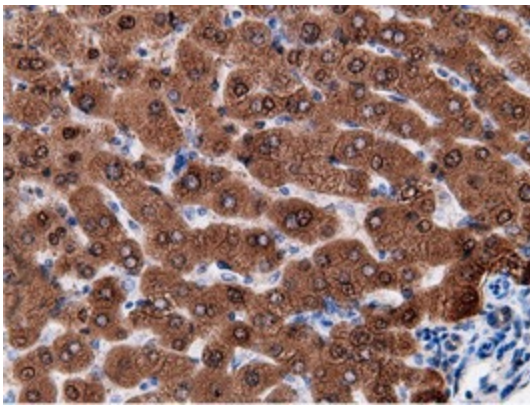
Immunohistochemical staining of paraffin-embedded Adenocarcinoma of Human ovary tissue using anti-EPHX2 mouse monoclonal antibody. (Heat-induced epitope retrieval by 10mM citric buffer, pH6.0, 100°C for 10min, TA501627)



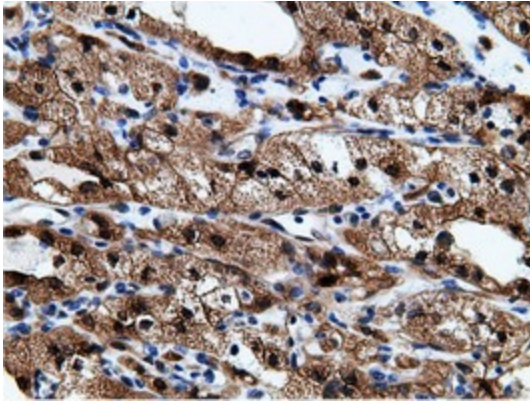
Immunohistochemical staining of paraffin-embedded Carcinoma of Human lung tissue using anti-EPHX2 mouse monoclonal antibody. (Heat-induced epitope retrieval by 10mM citric buffer, pH6.0, 100°C for 10min, TA501627)



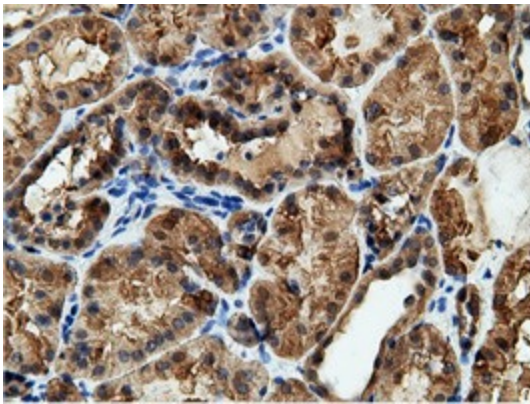
Immunohistochemical staining of paraffin-embedded Human lung tissue within the normal limits using anti-EPHX2 mouse monoclonal antibody. (Heat-induced epitope retrieval by 10mM citric buffer, pH6.0, 100°C for 10min, TA501627)



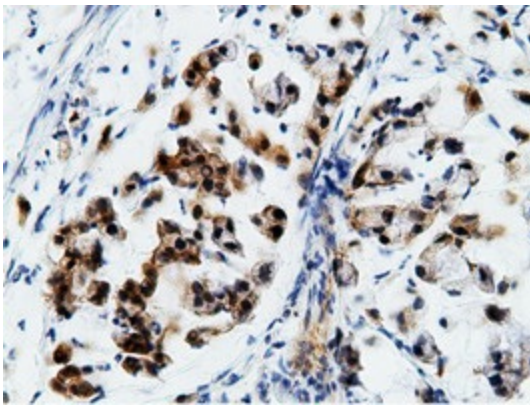
Immunohistochemical staining of paraffin-embedded Human liver tissue within the normal limits using anti-EPHX2 mouse monoclonal antibody. (Heat-induced epitope retrieval by 10mM citric buffer, pH6.0, 100°C for 10min, TA501627)



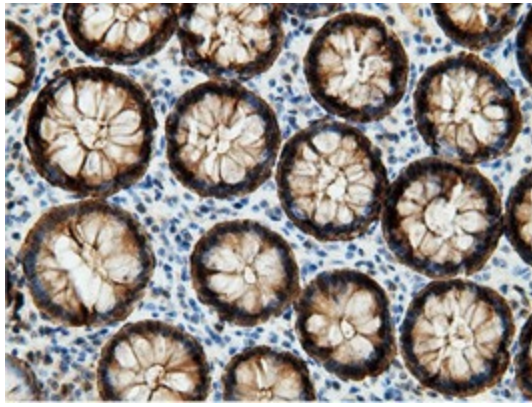
Immunohistochemical staining of paraffin-embedded Carcinoma of Human kidney tissue using anti-EPHX2 mouse monoclonal antibody. (Heat-induced epitope retrieval by 10mM citric buffer, pH6.0, 100°C for 10min, TA501627)



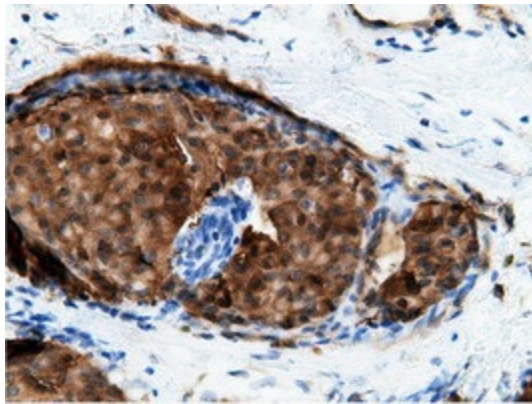
Immunohistochemical staining of paraffin-embedded Human Kidney tissue within the normal limits using anti-EPHX2 mouse monoclonal antibody. (Heat-induced epitope retrieval by 10mM citric buffer, pH6.0, 100°C for 10min, TA501627)



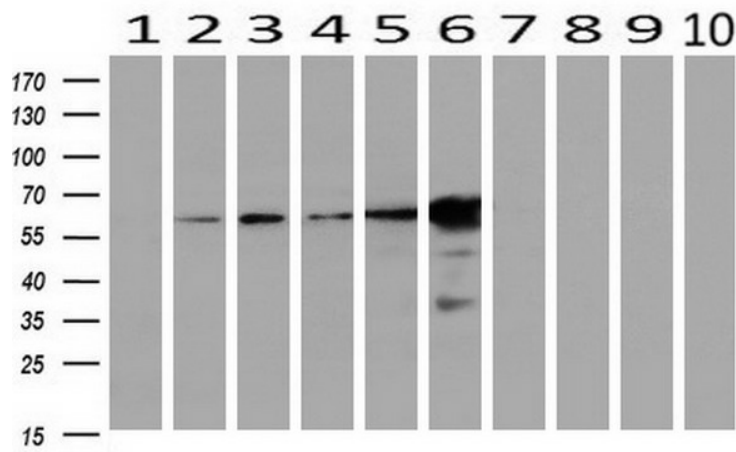
Immunohistochemical staining of paraffin-embedded Adenocarcinoma of Human colon tissue using anti-EPHX2 mouse monoclonal antibody. (Heat-induced epitope retrieval by 10mM citric buffer, pH6.0, 100°C for 10min, TA501627)



Immunohistochemical staining of paraffin-embedded Human colon tissue within the normal limits using anti-EPHX2 mouse monoclonal antibody. (Heat-induced epitope retrieval by 10mM citric buffer, pH6.0, 100°C for 10min, TA501627)



Immunohistochemical staining of paraffin-embedded Adenocarcinoma of Human breast tissue using anti-EPHX2 mouse monoclonal antibody. (Heat-induced epitope retrieval by 10mM citric buffer, pH6.0, 100°C for 10min, TA501627)



Western blot analysis of extracts (10ug) from 10 Human tissue by using anti-EPHX2 monoclonal antibody at 1:200 (1: Testis; 2: Omentum; 3: Uterus; 4: Breast; 5: Brain; 6: Liver; 7: Ovary; 8: Thyroid gland; 9: colon;10: spleen).