

## Product datasheet for TA501948

### PPWD1 Mouse Monoclonal Antibody [Clone ID: OTI1G6]

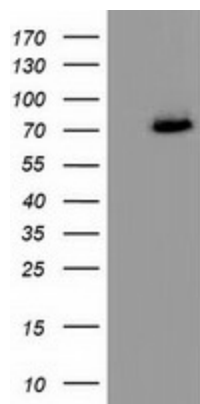
#### Product data:

Product Type:	Primary Antibodies
Clone Name:	OTI1G6
Applications:	FC, IF, WB
Recommend Dilution:	WB 1:500, IF 1:100, FLOW 1:100
Reactivity:	Human
Host:	Mouse
Isotype:	IgG1
Clonality:	Monoclonal
Immunogen:	Full length human recombinant protein of human PPWD1 (NP_056157) produced in HEK293T cell.
Formulation:	PBS (PH 7.3) containing 1% BSA, 50% glycerol and 0.02% sodium azide.
Concentration:	0.51 mg/ml
Purification:	Purified from mouse ascites fluids or tissue culture supernatant by affinity chromatography (protein A/G)
Predicted Protein Size:	73.4 kDa
Gene Name:	peptidylprolyl isomerase domain and WD repeat containing 1
Database Link:	<a href="#">NP_056157</a> <a href="#">Entrez Gene 23398</a> <a href="#">Human</a>
Synonyms:	KIAA0073

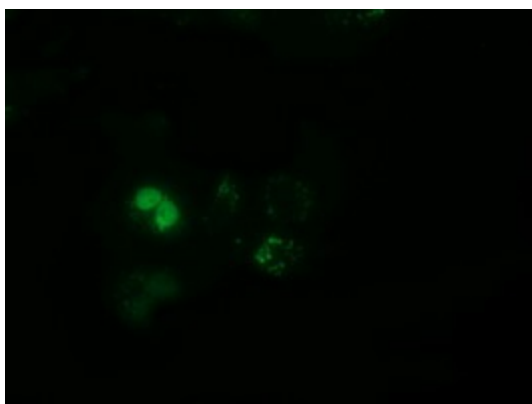


[View online »](#)

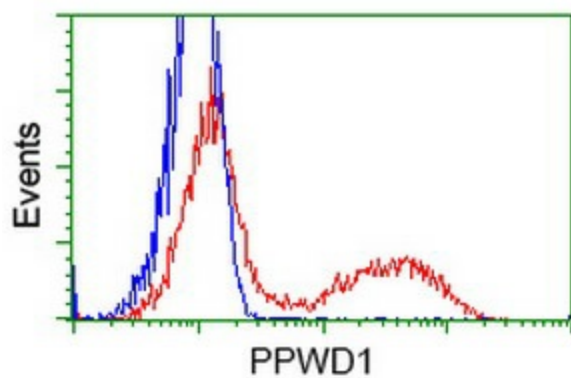
## Product images:



HEK293T cells were transfected with the pCMV6-ENTRY control (Left lane) or pCMV6-ENTRY PPWD1 ([RC204570], Right lane) cDNA for 48 hrs and lysed. Equivalent amounts of cell lysates (5 ug per lane) were separated by SDS-PAGE and immunoblotted with anti-PPWD1. Positive lysates [LY414604] (100ug) and [LC414604] (20ug) can be purchased separately from OriGene.



Anti-PPWD1 mouse monoclonal antibody (TA501948) immunofluorescent staining of COS7 cells transiently transfected by pCMV6-ENTRY PPWD1 ([RC204570]).



HEK293T cells transfected with either [RC204570] overexpress plasmid (Red) or empty vector control plasmid (Blue) were immunostained by anti-PPWD1 antibody (TA501948), and then analyzed by flow cytometry.