

Product datasheet for TA502059

KEAP1 Mouse Monoclonal Antibody [Clone ID: OT11B4]

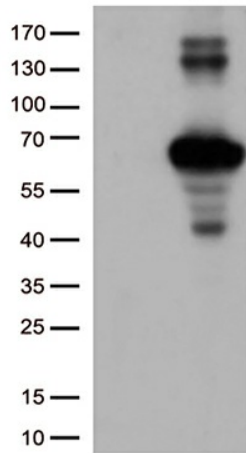
Product data:

Product Type:	Primary Antibodies
Clone Name:	OT11B4
Applications:	FC, IF, IHC, WB
Recommend Dilution:	WB 1:500~2000, IHC 1:150, FLOW 1:100
Reactivity:	Human, Mouse
Host:	Mouse
Isotype:	IgG1
Clonality:	Monoclonal
Immunogen:	Full length human recombinant protein of human KEAP1(NP_987096) produced in HEK293T cell.
Formulation:	PBS (PH 7.3) containing 1% BSA, 50% glycerol and 0.02% sodium azide.
Concentration:	1 mg/ml
Purification:	Purified from mouse ascites fluids or tissue culture supernatant by affinity chromatography (protein A/G)
Predicted Protein Size:	69.5 kDa
Gene Name:	kelch like ECH associated protein 1
Database Link:	NP_987096 Entrez Gene 50868 MouseEntrez Gene 9817 Human
Background:	This gene encodes a protein containing KELCH-1 like domains, as well as a BTB/POZ domain. Kelch-like ECH-associated protein 1 interacts with NF-E2-related factor 2 in a redox-sensitive manner and the dissociation of the proteins in the cytoplasm is followed by transportation of NF-E2-related factor 2 to the nucleus. This interaction results in the expression of the catalytic subunit of gamma-glutamylcysteine synthetase. Two alternatively spliced transcript variants encoding the same isoform have been found for this gene. [provided by RefSeq]
Synonyms:	INrf2; KLHL19
Protein Families:	Transcription Factors
Protein Pathways:	Ubiquitin mediated proteolysis

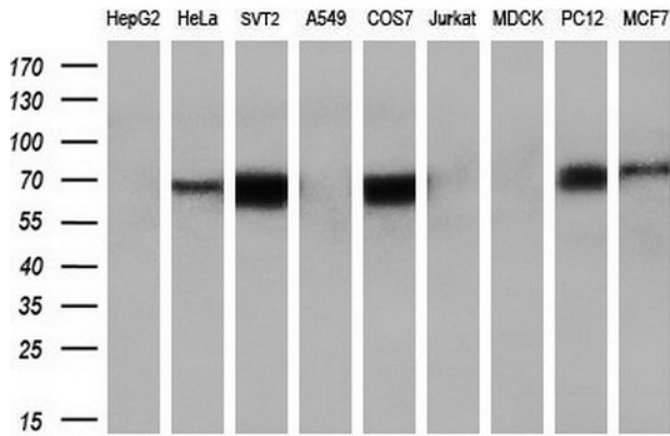


[View online »](#)

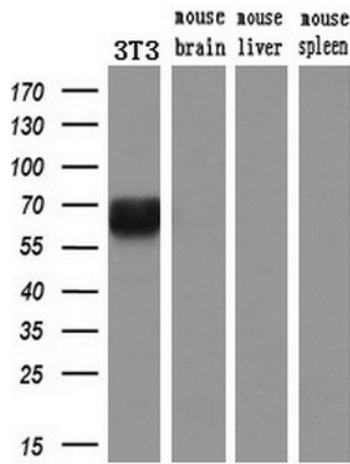
Product images:



HEK293T cells were transfected with the pCMV6-ENTRY control (Left lane) or pCMV6-ENTRY KEAP1 ([RC202189], Right lane) cDNA for 48 hrs and lysed. Equivalent amounts of cell lysates (5 ug per lane) were separated by SDS-PAGE and immunoblotted with anti-KEAP1 (1:1000).



Western blot analysis of extracts (35ug) from 9 different cell lines by using anti-KEAP1 monoclonal antibody at 1:200 dilution. (HepG2: human; HeLa: human; SVT2: mouse; A549: human; COS7: monkey; Jurkat: human; MDCK: canine; PC12: rat; MCF7: human)



Western blot analysis of extracts (10ug) from a mouse cell line and 3 different mouse tissues by using anti-KEAP1 monoclonal antibody (1:200).

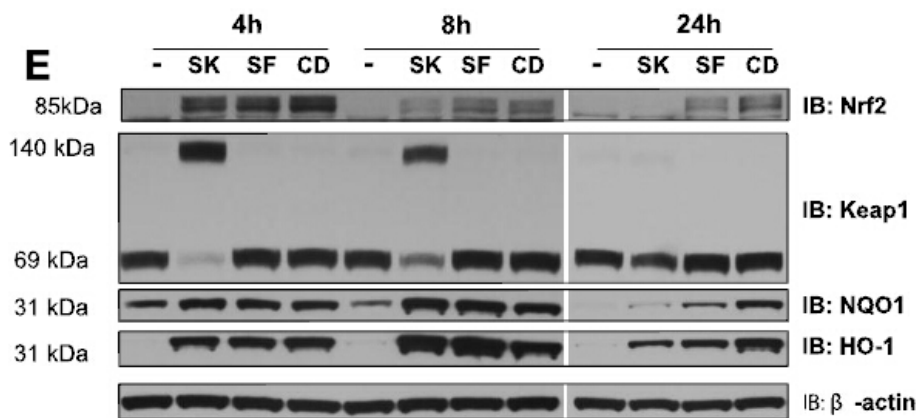
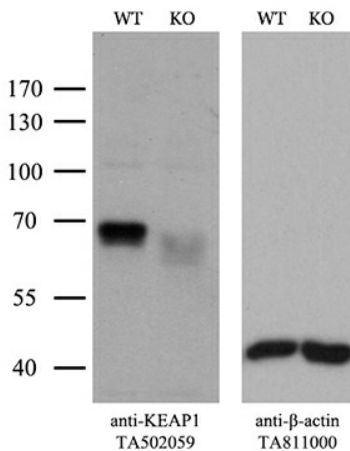
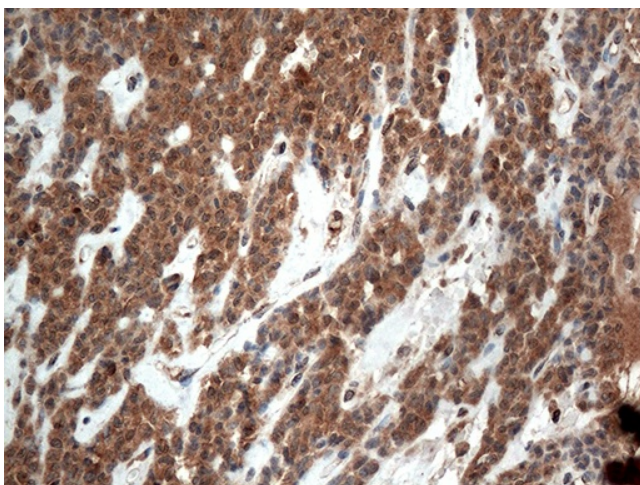


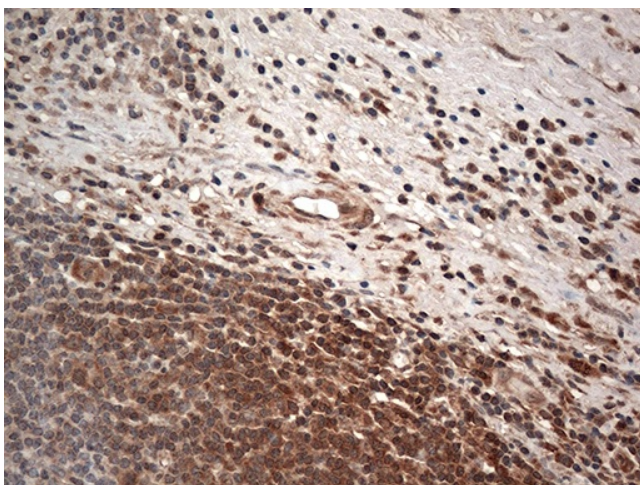
Figure from citation: Western Blot of Keap1 protein level by using anti-Keap1 antibody in human BEAS2B cells. [View Citation](#)



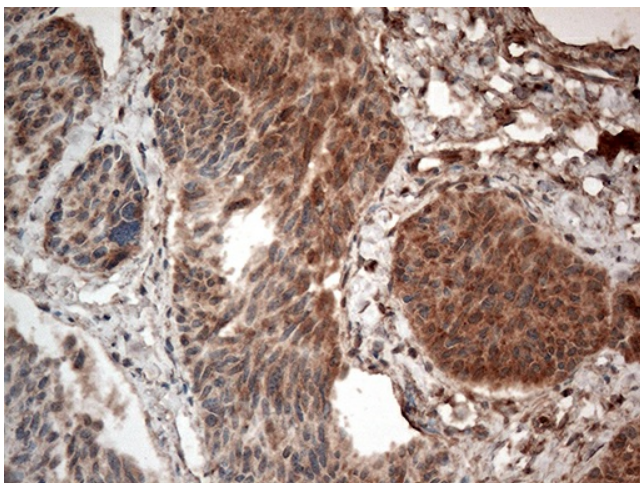
Equivalent amounts of cell lysates (10 ug per lane) of wild-type HeLa cells (WT, Cat# LC810HELA) and KEAP1-Knockout HeLa cells (KO, Cat# [LC810295]) were separated by SDS-PAGE and immunoblotted with anti-KEAP1 monoclonal antibody TA502059. Then the blotted membrane was stripped and reprobed with anti- β -actin antibody ([TA811000]) as a loading control (1:500).



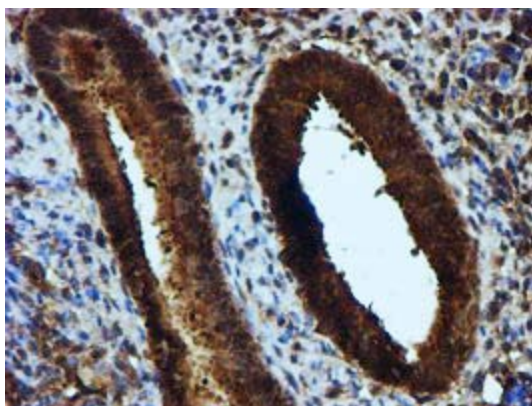
Immunohistochemical staining of paraffin-embedded Carcinoma of Human pancreas tissue using anti-KEAP1 mouse monoclonal antibody. (Heat-induced epitope retrieval by 1mM EDTA in 10mM Tris buffer (pH8.5) at 120°C for 3min, TA502059) (1:500)



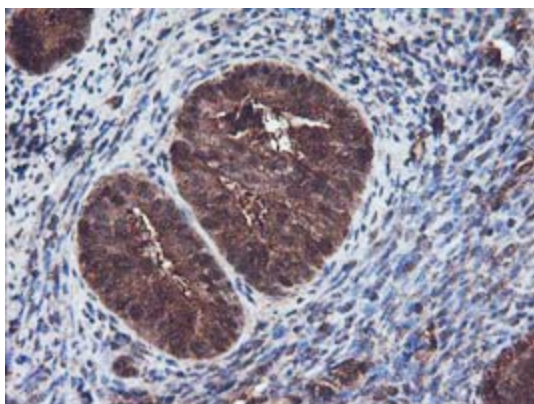
Immunohistochemical staining of paraffin-embedded Human thyroid tissue within the normal limits using anti-KEAP1 mouse monoclonal antibody. (Heat-induced epitope retrieval by 1mM EDTA in 10mM Tris buffer (pH8.5) at 120°C for 3min, TA502059) (1:500)



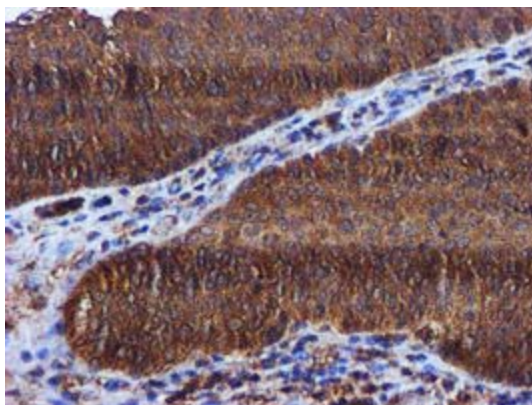
Immunohistochemical staining of paraffin-embedded Carcinoma of Human thyroid tissue using anti-KEAP1 mouse monoclonal antibody. (Heat-induced epitope retrieval by 1mM EDTA in 10mM Tris buffer (pH8.5) at 120°C for 3min, TA502059) (1:500)



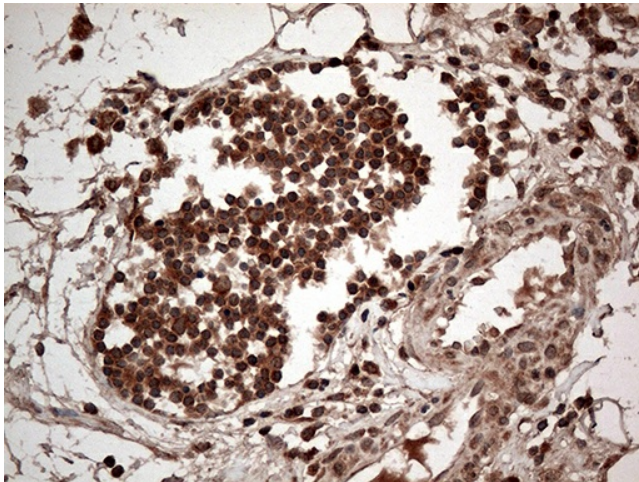
Immunohistochemical staining of paraffin-embedded Human endometrium tissue within the normal limits using anti-KEAP1 mouse monoclonal antibody. (Heat-induced epitope retrieval by 10mM citric buffer, pH6.0, 100°C for 10min, TA502059)



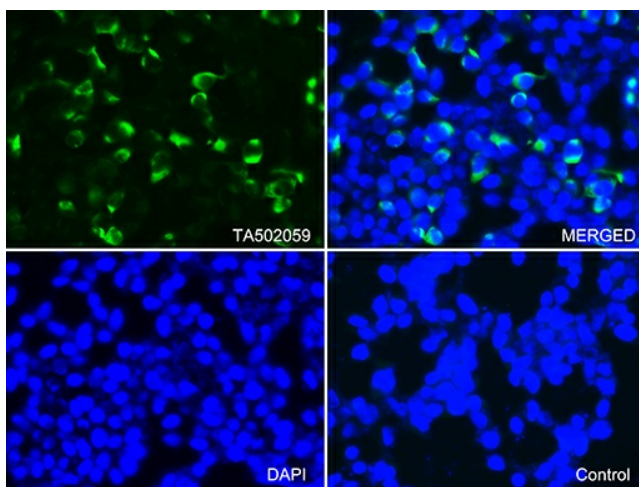
Immunohistochemical staining of paraffin-embedded Adenocarcinoma of Human endometrium tissue using anti-KEAP1 mouse monoclonal antibody. (Heat-induced epitope retrieval by 10mM citric buffer, pH6.0, 100°C for 10min, TA502059)



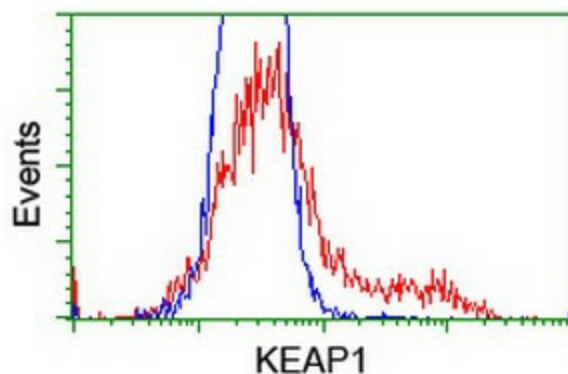
Immunohistochemical staining of paraffin-embedded Carcinoma of Human bladder tissue using anti-KEAP1 mouse monoclonal antibody. (Heat-induced epitope retrieval by 10mM citric buffer, pH6.0, 100°C for 10min, TA502059)



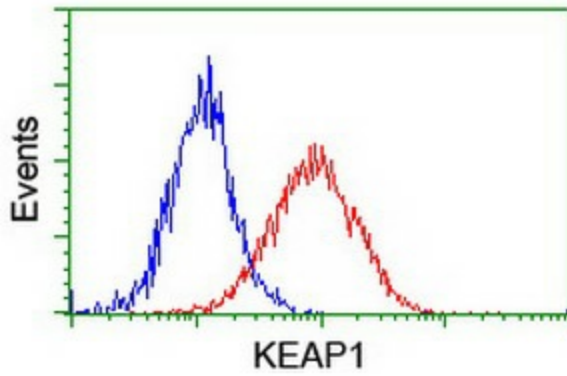
Immunohistochemical staining of paraffin-embedded Human appendix tissue within the normal limits using anti-KEAP1 mouse monoclonal antibody. (Heat-induced epitope retrieval by 1mM EDTA in 10mM Tris buffer (pH8.5) at 120°C for 3min, TA502059) (1:500)



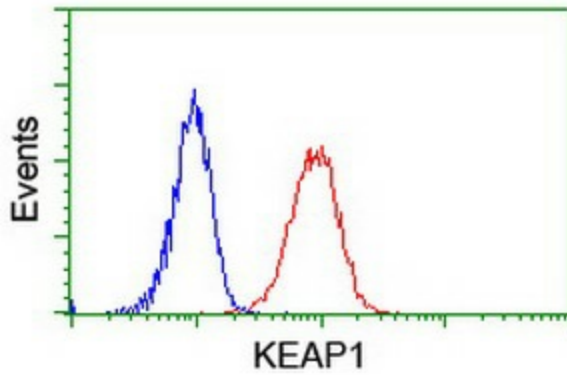
Immunofluorescent staining of 293T cells transfected by pCMV6-ENTRY KEAP1 ([RC202189]) using anti-KEAP1 antibody (TA502059/green, upper left; DAPI/blue, lower left; MERGED, upper right). 293T cells transfected with empty vector served as a negative control (MERGED, lower right) (1:100).



HEK293T cells transfected with either [RC202189] overexpress plasmid (Red) or empty vector control plasmid (Blue) were immunostained by anti-KEAP1 antibody (TA502059), and then analyzed by flow cytometry.



Flow cytometric Analysis of HeLa cells, using anti-KEAP1 antibody (TA502059), (Red), compared to a nonspecific negative control antibody, (Blue).



Flow cytometric Analysis of Jurkat cells, using anti-KEAP1 antibody (TA502059), (Red), compared to a nonspecific negative control antibody, (Blue).