

Product datasheet for **TA502080**

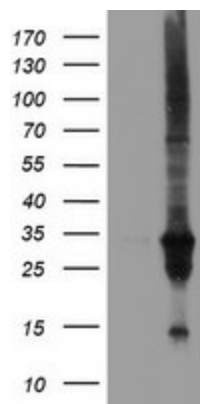
DUSP27 (DUPD1) Mouse Monoclonal Antibody [Clone ID: OTI7E4]

Product data:

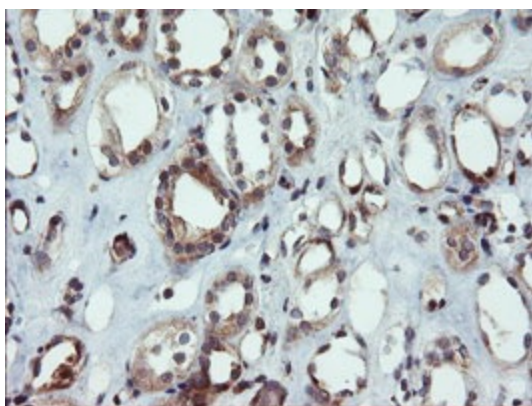
Product Type:	Primary Antibodies
Clone Name:	OTI7E4
Applications:	FC, IHC, WB
Recommend Dilution:	WB 1:2000, IHC 1:150, FLOW 1:100
Reactivity:	Human
Host:	Mouse
Isotype:	IgG1
Clonality:	Monoclonal
Immunogen:	Full length human recombinant protein of human DUPD1(NP_001003892) produced in HEK293T cell.
Formulation:	PBS (PH 7.3) containing 1% BSA, 50% glycerol and 0.02% sodium azide.
Concentration:	1.1 mg/ml
Purification:	Purified from mouse ascites fluids or tissue culture supernatant by affinity chromatography (protein A/G)
Predicted Protein Size:	25.2 kDa
Gene Name:	dual specificity phosphatase and pro isomerase domain containing 1
Database Link:	NP_001003892 Entrez Gene 338599 Human
Synonyms:	DUSP27; FMDSP
Protein Families:	Phosphatase



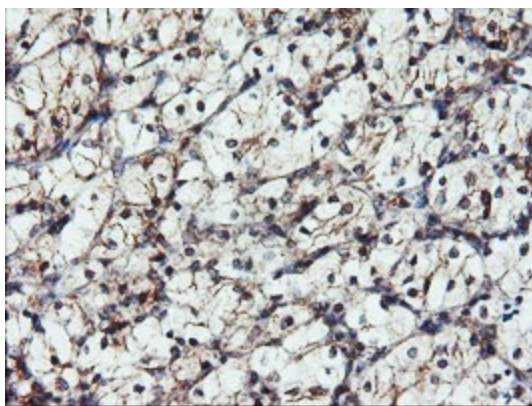
[View online »](#)

Product images:

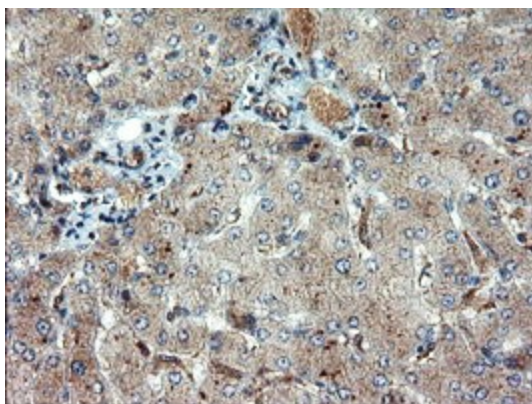
HEK293T cells were transfected with the pCMV6-ENTRY control (Left lane) or pCMV6-ENTRY DUPD1 ([RC214361], Right lane) cDNA for 48 hrs and lysed. Equivalent amounts of cell lysates (5 ug per lane) were separated by SDS-PAGE and immunoblotted with anti-DUPD1. Positive lysates [LY424030] (100ug) and [LC424030] (20ug) can be purchased separately from OriGene.



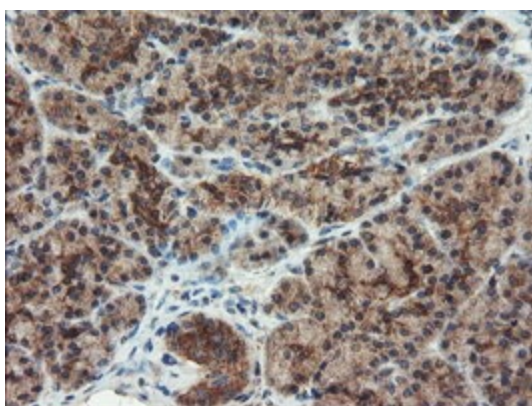
Immunohistochemical staining of paraffin-embedded Human Kidney tissue within the normal limits using anti-DUPD1 mouse monoclonal antibody. (Heat-induced epitope retrieval by 10mM citric buffer, pH6.0, 100°C for 10min, TA502080)



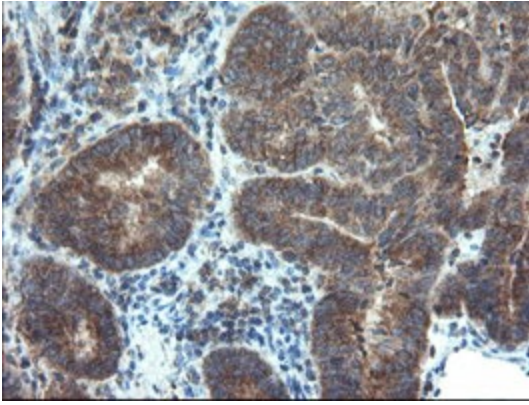
Immunohistochemical staining of paraffin-embedded Carcinoma of Human kidney tissue using anti-DUPD1 mouse monoclonal antibody. (Heat-induced epitope retrieval by 10mM citric buffer, pH6.0, 100°C for 10min, TA502080)



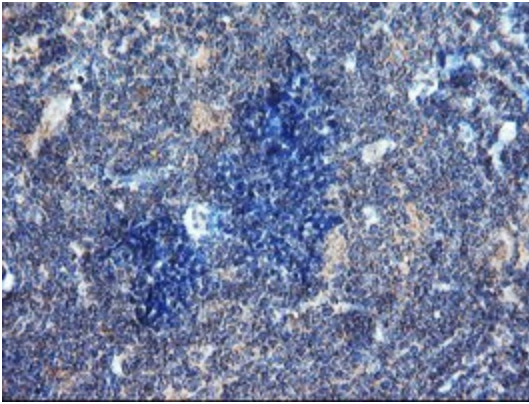
Immunohistochemical staining of paraffin-embedded Human liver tissue within the normal limits using anti-DUPD1 mouse monoclonal antibody. (Heat-induced epitope retrieval by 10mM citric buffer, pH6.0, 100°C for 10min, TA502080)



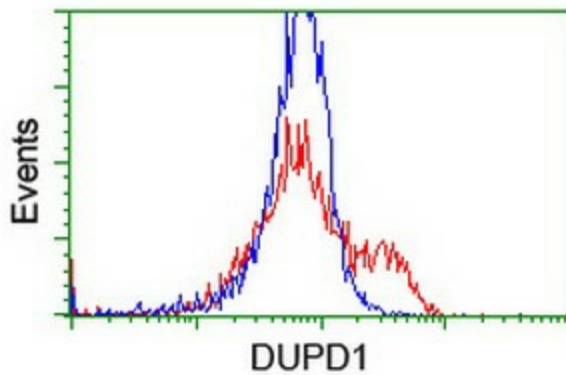
Immunohistochemical staining of paraffin-embedded Human pancreas tissue within the normal limits using anti-DUPD1 mouse monoclonal antibody. (Heat-induced epitope retrieval by 10mM citric buffer, pH6.0, 100°C for 10min, TA502080)



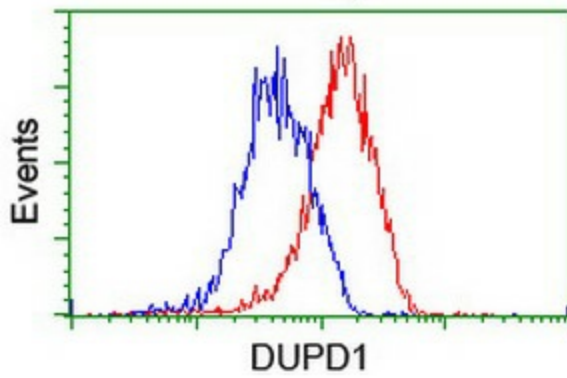
Immunohistochemical staining of paraffin-embedded Adenocarcinoma of Human endometrium tissue using anti-DUPD1 mouse monoclonal antibody. (Heat-induced epitope retrieval by 10mM citric buffer, pH6.0, 100°C for 10min, TA502080)



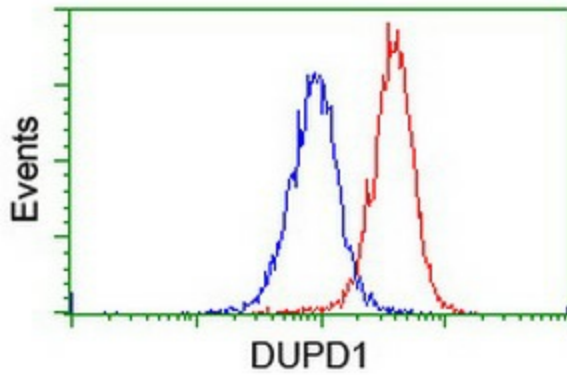
Immunohistochemical staining of paraffin-embedded Human Lymphoma tissue using anti-DUPD1 mouse monoclonal antibody. (Heat-induced epitope retrieval by 10mM citric buffer, pH6.0, 100°C for 10min, TA502080)



HEK293T cells transfected with either [RC214361] overexpress plasmid (Red) or empty vector control plasmid (Blue) were immunostained by anti-DUPD1 antibody (TA502080), and then analyzed by flow cytometry.



Flow cytometric Analysis of HeLa cells, using anti-DUPD1 antibody (TA502080), (Red), compared to a nonspecific negative control antibody, (Blue).



Flow cytometric Analysis of Jurkat cells, using anti-DUPD1 antibody (TA502080), (Red), compared to a nonspecific negative control antibody, (Blue).