

Product datasheet for **TA502202**

ERK5 (MAPK7) Mouse Monoclonal Antibody [Clone ID: OTI1A4]

Product data:

Product Type:	Primary Antibodies
Clone Name:	OTI1A4
Applications:	FC, IF, WB
Recommend Dilution:	WB 1:500, IF 1:100, FLOW 1:100
Reactivity:	Human
Host:	Mouse
Isotype:	IgG1
Clonality:	Monoclonal
Immunogen:	Full length human recombinant protein of human MAPK7 (NP_002740) produced in HEK293T cell.
Formulation:	PBS (PH 7.3) containing 1% BSA, 50% glycerol and 0.02% sodium azide.
Concentration:	0.84 mg/ml
Purification:	Purified from mouse ascites fluids or tissue culture supernatant by affinity chromatography (protein A/G)
Predicted Protein Size:	88.2 kDa
Gene Name:	mitogen-activated protein kinase 7
Database Link:	NP_002740 Entrez Gene 5598 Human
Background:	The protein encoded by this gene is a member of the MAP kinase family. MAP kinases act as an integration point for multiple biochemical signals, and are involved in a wide variety of cellular processes such as proliferation, differentiation, transcription regulation and development. This kinase is specifically activated by mitogen-activated protein kinase kinase 5 (MAP2K5/MEK5). It is involved in the downstream signaling processes of various receptor molecules including receptor type kinases, and G protein-coupled receptors. In response to extracellular signals, this kinase translocates to cell nucleus, where it regulates gene expression by phosphorylating, and activating different transcription factors. Four alternatively spliced transcript variants of this gene encoding two distinct isoforms have been reported. [provided by RefSeq]
Synonyms:	BMK1; ERK4; ERK5; PRKM7

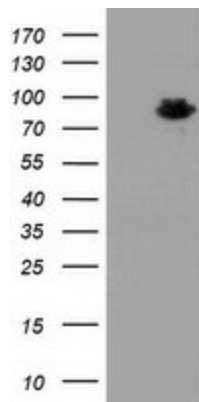


[View online »](#)

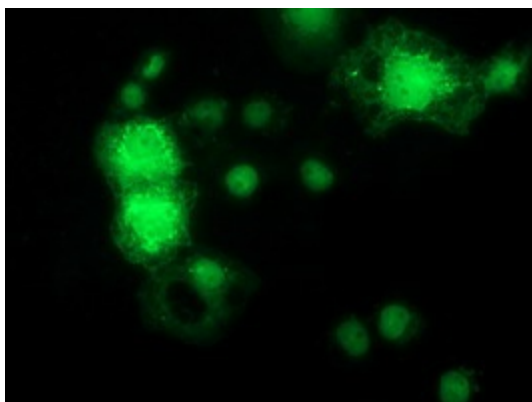
Protein Families: Druggable Genome, Protein Kinase

Protein Pathways: Gap junction, GnRH signaling pathway, MAPK signaling pathway, Neurotrophin signaling pathway

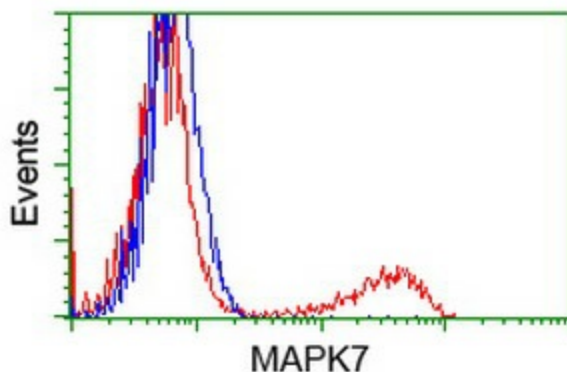
Product images:



HEK293T cells were transfected with the pCMV6-ENTRY control (Left lane) or pCMV6-ENTRY MAPK7 ([RC203506], Right lane) cDNA for 48 hrs and lysed. Equivalent amounts of cell lysates (5 ug per lane) were separated by SDS-PAGE and immunoblotted with anti-MAPK7. Positive lysates [LY419130] (100ug) and [LC419130] (20ug) can be purchased separately from OriGene.



Anti-MAPK7 mouse monoclonal antibody (TA502202) immunofluorescent staining of COS7 cells transiently transfected by pCMV6-ENTRY MAPK7 ([RC203506]).



HEK293T cells transfected with either [RC203506] overexpress plasmid (Red) or empty vector control plasmid (Blue) were immunostained by anti-MAPK7 antibody (TA502202), and then analyzed by flow cytometry.