

Product datasheet for TA502659

Guanylate kinase (GUK1) Mouse Monoclonal Antibody [Clone ID: OTI1D7]

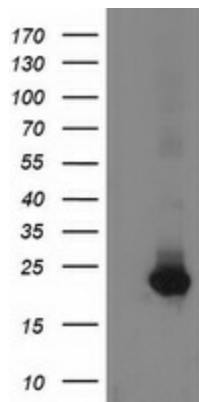
Product data:

Product Type:	Primary Antibodies
Clone Name:	OTI1D7
Applications:	FC, IHC, WB
Recommend Dilution:	WB 1:500~2000, IHC 1:150, FLOW 1:100
Reactivity:	Human
Host:	Mouse
Isotype:	IgG2b
Clonality:	Monoclonal
Immunogen:	Full length human recombinant protein of human GUK1 (NP_000849) produced in HEK293T cell.
Formulation:	PBS (PH 7.3) containing 1% BSA, 50% glycerol and 0.02% sodium azide.
Concentration:	0.33 mg/ml
Purification:	Purified from mouse ascites fluids or tissue culture supernatant by affinity chromatography (protein A/G)
Predicted Protein Size:	21.5 kDa
Gene Name:	guanylate kinase 1
Database Link:	NP_000849 Entrez Gene 2987 Human
Synonyms:	GMK
Protein Families:	Druggable Genome
Protein Pathways:	Metabolic pathways, Purine metabolism

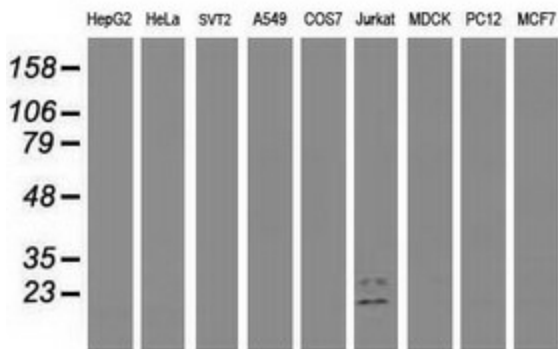


[View online »](#)

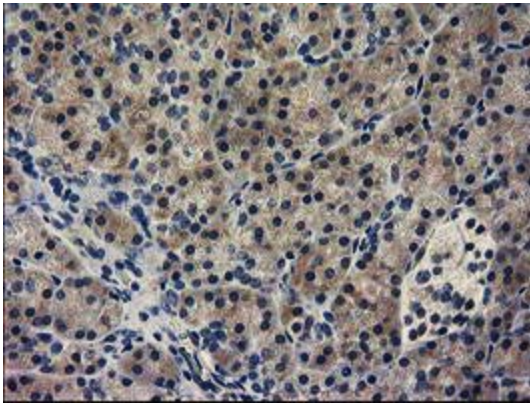
Product images:



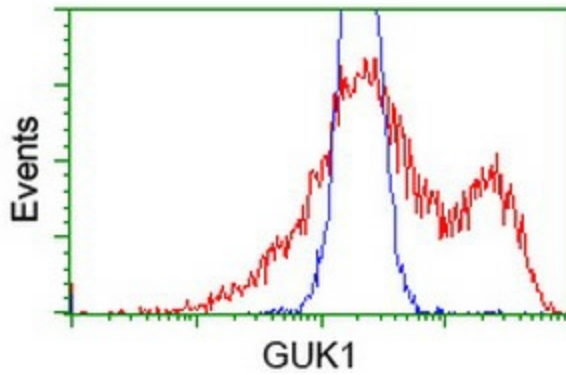
HEK293T cells were transfected with the pCMV6-ENTRY control (Left lane) or pCMV6-ENTRY GUK1 ([RC202510], Right lane) cDNA for 48 hrs and lysed. Equivalent amounts of cell lysates (5 ug per lane) were separated by SDS-PAGE and immunoblotted with anti-GUK1. Positive lysates [LY400303] (100ug) and [LC400303] (20ug) can be purchased separately from OriGene.



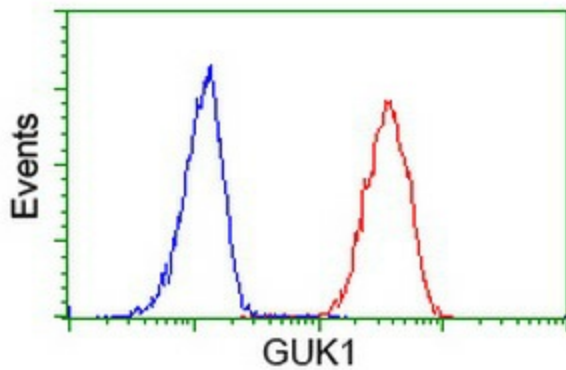
Western blot analysis of extracts (35ug) from 9 different cell lines by using anti-GUK1 monoclonal antibody.



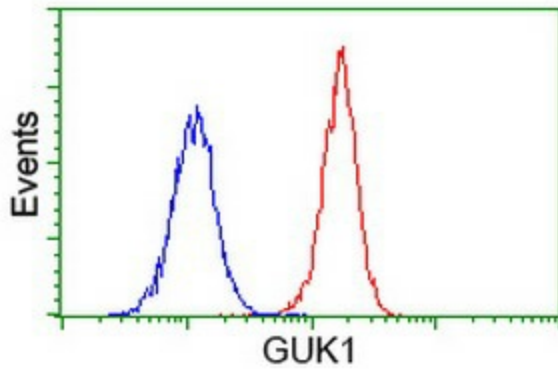
Immunohistochemical staining of paraffin-embedded Human pancreas tissue within the normal limits using anti-GUK1 mouse monoclonal antibody. (Heat-induced epitope retrieval by 10mM citric buffer, pH6.0, 100°C for 10min, TA502659)



HEK293T cells transfected with either [RC202510] overexpress plasmid (Red) or empty vector control plasmid (Blue) were immunostained by anti-GUK1 antibody (TA502659), and then analyzed by flow cytometry.



Flow cytometric Analysis of HeLa cells, using anti-GUK1 antibody (TA502659), (Red), compared to a nonspecific negative control antibody, (Blue).



Flow cytometric Analysis of Jurkat cells, using anti-GUK1 antibody (TA502659), (Red), compared to a nonspecific negative control antibody, (Blue).