

Product datasheet for TA502772

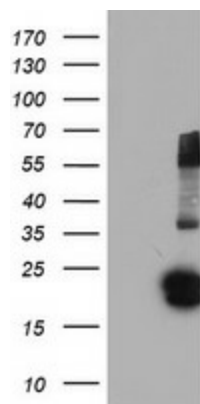
FGF21 Mouse Monoclonal Antibody [Clone ID: OTI2F10]

Product data:

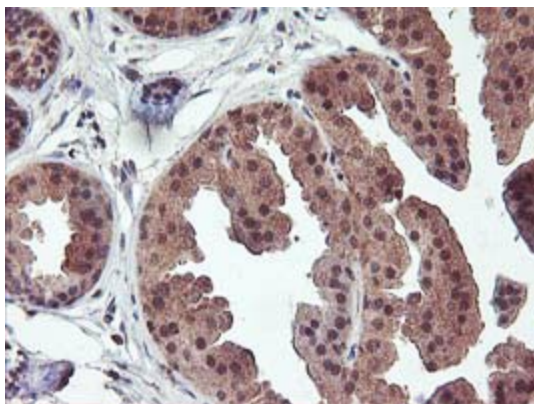
Product Type:	Primary Antibodies
Clone Name:	OTI2F10
Applications:	FC, IF, IHC, WB
Recommend Dilution:	WB: 1:2000, IHC: 1:150, FLOW: 1:100, IF: 1:50-1:100
Reactivity:	Human
Host:	Mouse
Isotype:	IgG2a
Clonality:	Monoclonal
Immunogen:	Human recombinant protein fragment corresponding to amino acids 29-209 of human FGF21(NP_061986) produced in E.coli.
Formulation:	PBS (PH 7.3) containing 1% BSA, 50% glycerol and 0.02% sodium azide.
Concentration:	1.4 mg/ml
Purification:	Purified from mouse ascites fluids or tissue culture supernatant by affinity chromatography (protein A/G)
Gene Name:	fibroblast growth factor 21
Database Link:	NP_061986 Entrez Gene 26291 Human
Background:	The protein encoded by this gene is a member of the fibroblast growth factor (FGF) family. FGF family members possess broad mitogenic and cell survival activities and are involved in a variety of biological processes including embryonic development, cell growth, morphogenesis, tissue repair, tumor growth and invasion. The function of this growth factor has not yet been determined. [provided by RefSeq]
Synonyms:	fibroblast growth factor 21
Protein Families:	Adult stem cells, Embryonic stem cells, ES Cell Differentiation/IPS, Secreted Protein
Protein Pathways:	MAPK signaling pathway, Melanoma, Pathways in cancer, Regulation of actin cytoskeleton



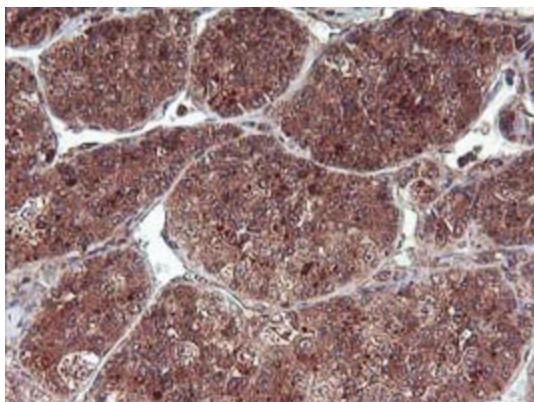
[View online »](#)

Product images:

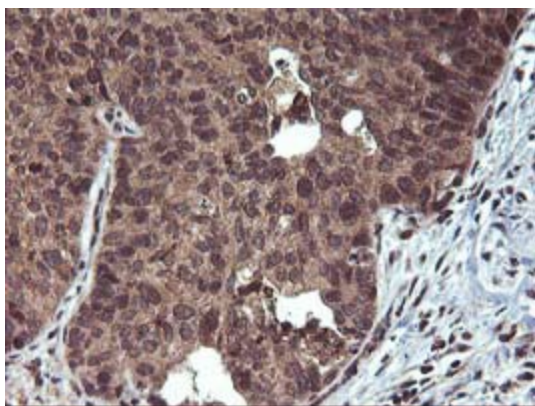
HEK293T cells were transfected with the pCMV6-ENTRY control (Left lane) or pCMV6-ENTRY FGF21 ([RC204538], Right lane) cDNA for 48 hrs and lysed. Equivalent amounts of cell lysates (5 ug per lane) were separated by SDS-PAGE and immunoblotted with anti-FGF21. Positive lysates [LY412740] (100ug) and [LC412740] (20ug) can be purchased separately from OriGene.



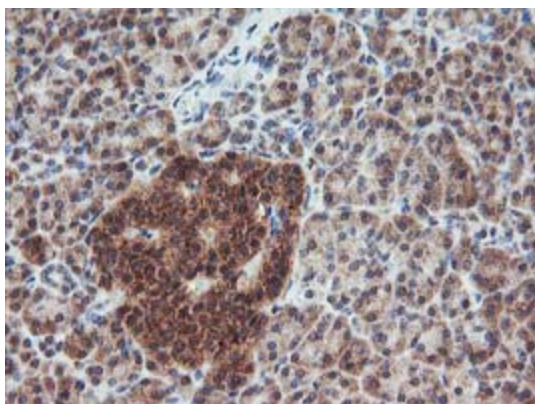
Immunohistochemical staining of paraffin-embedded Human breast tissue within the normal limits using anti-FGF21 mouse monoclonal antibody. (Heat-induced epitope retrieval by 10mM citric buffer, pH6.0, 100°C for 10min, TA502772)



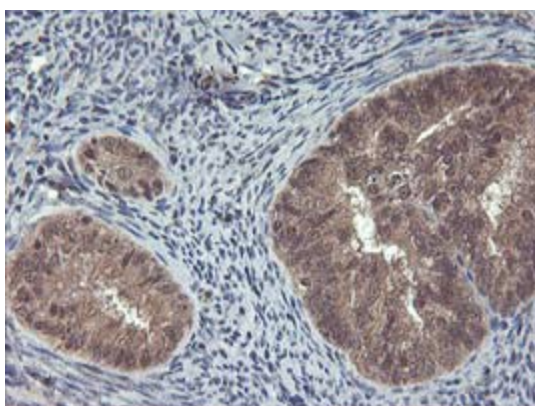
Immunohistochemical staining of paraffin-embedded Carcinoma of Human liver tissue using anti-FGF21 mouse monoclonal antibody. (Heat-induced epitope retrieval by 10mM citric buffer, pH6.0, 100°C for 10min, TA502772)



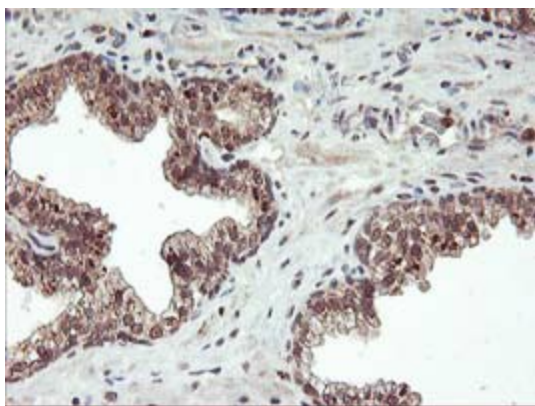
Immunohistochemical staining of paraffin-embedded Carcinoma of Human lung tissue using anti-FGF21 mouse monoclonal antibody. (Heat-induced epitope retrieval by 10mM citric buffer, pH6.0, 100°C for 10min, TA502772)



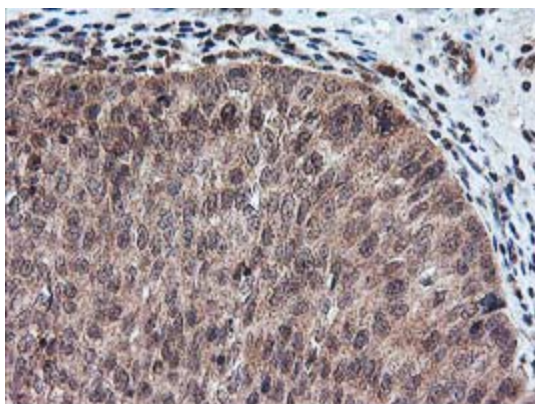
Immunohistochemical staining of paraffin-embedded Human pancreas tissue within the normal limits using anti-FGF21 mouse monoclonal antibody. (Heat-induced epitope retrieval by 10mM citric buffer, pH6.0, 100°C for 10min, TA502772)



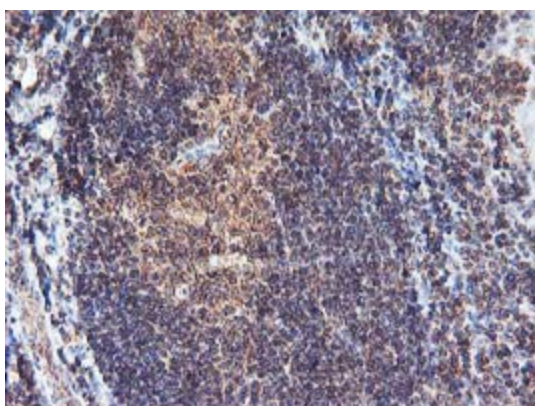
Immunohistochemical staining of paraffin-embedded Adenocarcinoma of Human endometrium tissue using anti-FGF21 mouse monoclonal antibody. (Heat-induced epitope retrieval by 10mM citric buffer, pH6.0, 100°C for 10min, TA502772)



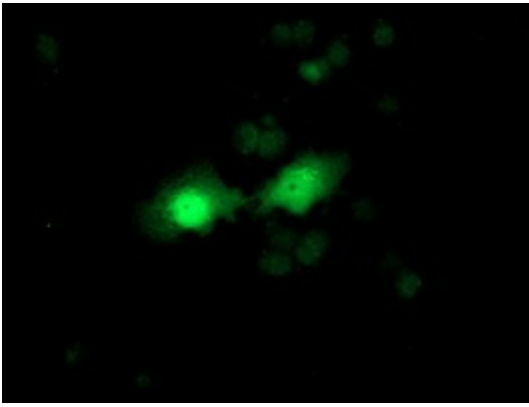
Immunohistochemical staining of paraffin-embedded Carcinoma of Human prostate tissue using anti-FGF21 mouse monoclonal antibody. (Heat-induced epitope retrieval by 10mM citric buffer, pH6.0, 100°C for 10min, TA502772)



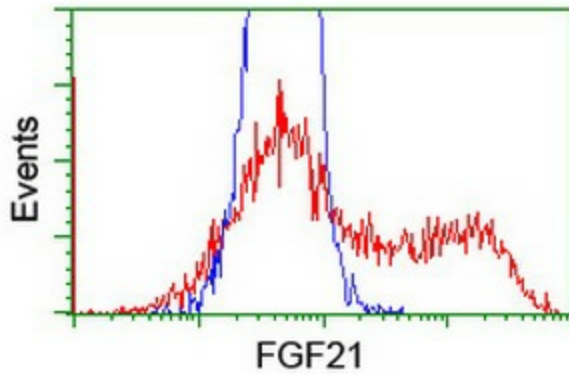
Immunohistochemical staining of paraffin-embedded Carcinoma of Human bladder tissue using anti-FGF21 mouse monoclonal antibody. (Heat-induced epitope retrieval by 10mM citric buffer, pH6.0, 100°C for 10min, TA502772)



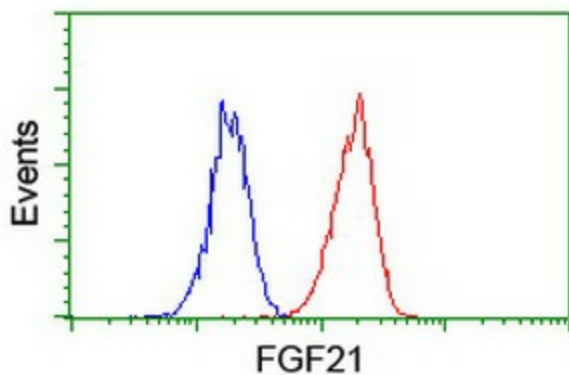
Immunohistochemical staining of paraffin-embedded Human tonsil within the normal limits using anti-FGF21 mouse monoclonal antibody. (Heat-induced epitope retrieval by 10mM citric buffer, pH6.0, 100°C for 10min, TA502772)



Anti-FGF21 mouse monoclonal antibody (TA502772) immunofluorescent staining of COS7 cells transiently transfected by pCMV6-ENTRY FGF21 ([RC204538]) at 1:100



HEK293T cells transfected with either [RC204538] overexpress plasmid (Red) or empty vector control plasmid (Blue) were immunostained by anti-FGF21 antibody (TA502772), and then analyzed by flow cytometry.



Flow cytometric Analysis of Jurkat cells, using anti-FGF21 antibody (TA502772), (Red), compared to a nonspecific negative control antibody, (Blue).