

Product datasheet for **TA503042**

EIF4E Mouse Monoclonal Antibody [Clone ID: OTI5D11]

Product data:

Product Type:	Primary Antibodies
Clone Name:	OTI5D11
Applications:	FC, IHC, WB
Recommend Dilution:	WB 1:2000, IHC 1:150
Reactivity:	Human
Host:	Mouse
Isotype:	IgG1
Clonality:	Monoclonal
Immunogen:	Full length human recombinant protein of human EIF4E(NP_001959) produced in HEK293T cell.
Formulation:	PBS (PH 7.3) containing 1% BSA, 50% glycerol and 0.02% sodium azide.
Concentration:	0.5 mg/ml
Purification:	Purified from mouse ascites fluids or tissue culture supernatant by affinity chromatography (protein A/G)
Predicted Protein Size:	24.9 kDa
Gene Name:	eukaryotic translation initiation factor 4E
Database Link:	NP_001959 Entrez Gene 1977 Human
Background:	All eukaryotic cellular mRNAs are blocked at their 5-prime ends with the 7-methylguanosine cap structure, m7GpppX (where X is any nucleotide). This structure is involved in several cellular processes including enhanced translational efficiency, splicing, mRNA stability, and RNA nuclear export. EIF4E is a eukaryotic translation initiation factor involved in directing ribosomes to the cap structure of mRNAs. It is a 24-kD polypeptide that exists as both a free form and as part of a multiprotein complex termed EIF4F. The EIF4E polypeptide is the rate-limiting component of the eukaryotic translation apparatus and is involved in the mRNA-ribosome binding step of eukaryotic protein synthesis. The other subunits of EIF4F are a 50-kD polypeptide, termed EIF4A (see MIM 601102), that possesses ATPase and RNA helicase activities, and a 220-kD polypeptide, EIF4G (MIM 600495) (Rychlik et al., 1987 [PubMed 3469651]). [supplied by OMIM]

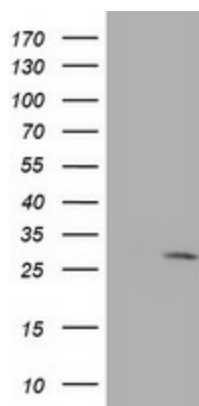


[View online »](#)

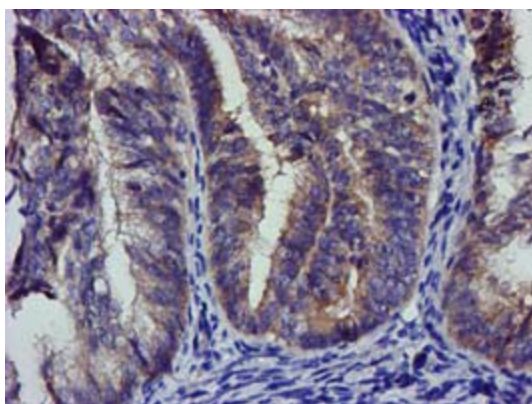
Synonyms: AUTS19; CBP; eIF-4E; EIF4E1; EIF4EL1; EIF4F

Protein Pathways: Insulin signaling pathway, mTOR signaling pathway

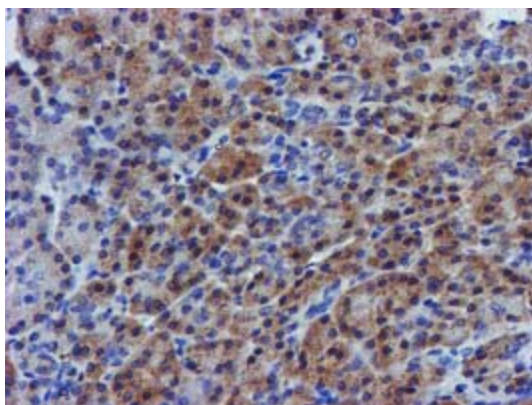
Product images:



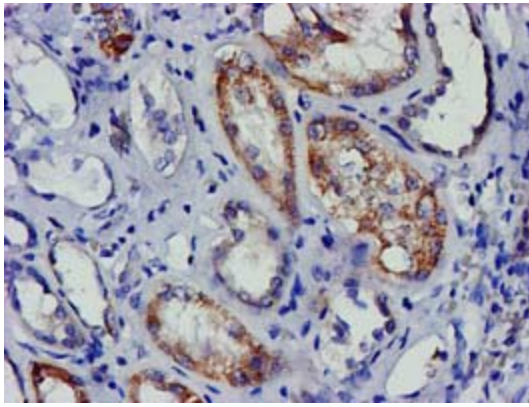
HEK293T cells were transfected with the pCMV6-ENTRY control (Left lane) or pCMV6-ENTRY EIF4E ([RC207333], Right lane) cDNA for 48 hrs and lysed. Equivalent amounts of cell lysates (5 ug per lane) were separated by SDS-PAGE and immunoblotted with anti-EIF4E. Positive lysates [LY400723] (100ug) and [LC400723] (20ug) can be purchased separately from OriGene.



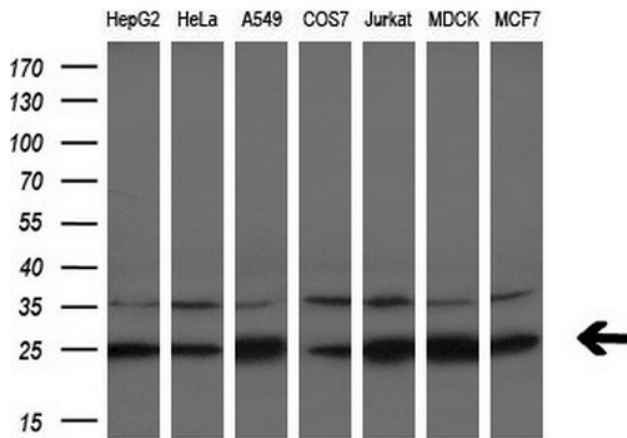
Immunohistochemical staining of paraffin-embedded Adenocarcinoma of Human endometrium tissue using anti-EIF4E mouse monoclonal antibody. (Heat-induced epitope retrieval by 10mM citric buffer, pH6.0, 100°C for 10min, TA503042)



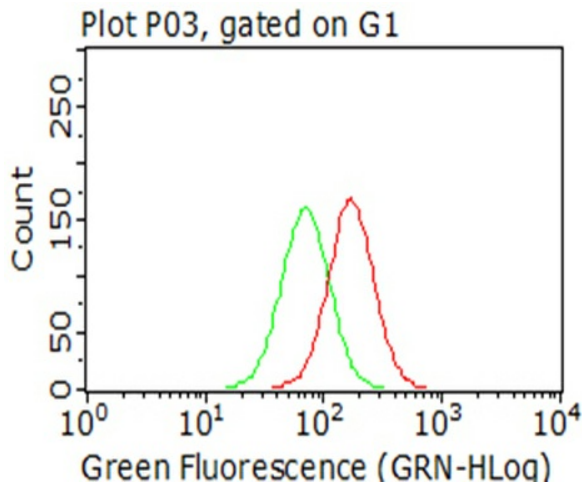
Immunohistochemical staining of paraffin-embedded Human pancreas tissue within the normal limits using anti-EIF4E mouse monoclonal antibody. (Heat-induced epitope retrieval by 10mM citric buffer, pH6.0, 100°C for 10min, TA503042)



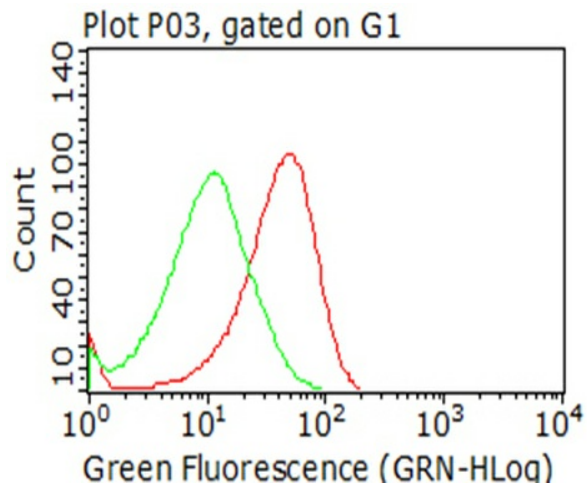
Immunohistochemical staining of paraffin-embedded Human Kidney tissue within the normal limits using anti-EIF4E mouse monoclonal antibody. (Heat-induced epitope retrieval by 10mM citric buffer, pH6.0, 100°C for 10min, TA503042)



Western blot analysis of extracts (10ug) from 7 different cell lines by using anti-EIF4E monoclonal antibody (1:200).



Flow cytometric Analysis of permeabilized A549 cells, using anti-EIF4E antibody (TA503042), (Red), compared to an IgG isotype control, (green) (1:100).



Flow cytometric Analysis of permeabilized Jurkat cells, using anti-EIF4E antibody (TA503042), (Red), compared to an IgG isotype control, (green) (1:100).