

Product datasheet for TA503090

TOMM34 Mouse Monoclonal Antibody [Clone ID: OTI2A9]

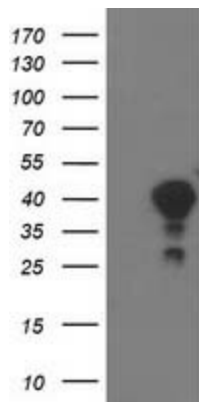
Product data:

Product Type:	Primary Antibodies
Clone Name:	OTI2A9
Applications:	FC, IF, IHC, WB
Recommend Dilution:	WB 1:500~2000, IHC 1:150, IF 1:50~100, FLOW 1:100
Reactivity:	Human
Host:	Mouse
Isotype:	IgG2a
Clonality:	Monoclonal
Immunogen:	Full length human recombinant protein of human TOMM34(NP_006800) produced in HEK293 cell.
Formulation:	PBS (PH 7.3) containing 1% BSA, 50% glycerol and 0.02% sodium azide.
Concentration:	0.96 mg/ml
Purification:	Purified from mouse ascites fluids or tissue culture supernatant by affinity chromatography (protein A/G)
Predicted Protein Size:	34.4 kDa
Gene Name:	translocase of outer mitochondrial membrane 34
Database Link:	NP_006800 Entrez Gene 10953 Human
Background:	The protein encoded by this gene is involved in the import of precursor proteins into mitochondria. The encoded protein has a chaperone-like activity, binding the mature portion of unfolded proteins and aiding their import into mitochondria. This protein, which is found in the cytoplasm and sometimes associated with the outer mitochondrial membrane, has a weak ATPase activity and contains 6 TPR repeats. [provided by RefSeq]
Synonyms:	HTOM34P; TOM34; URCC3
Protein Families:	Druggable Genome

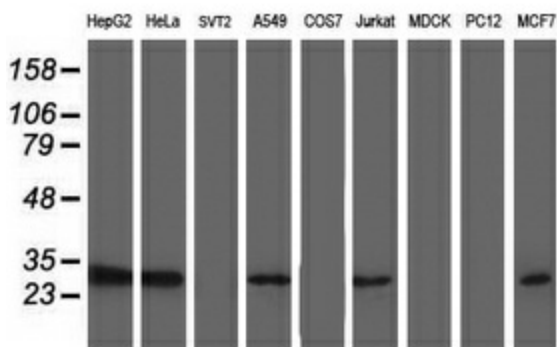


[View online »](#)

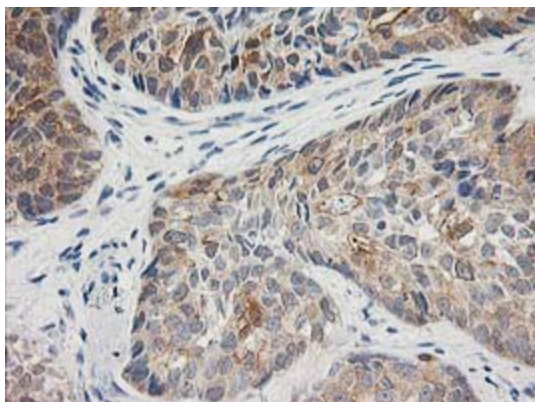
Product images:



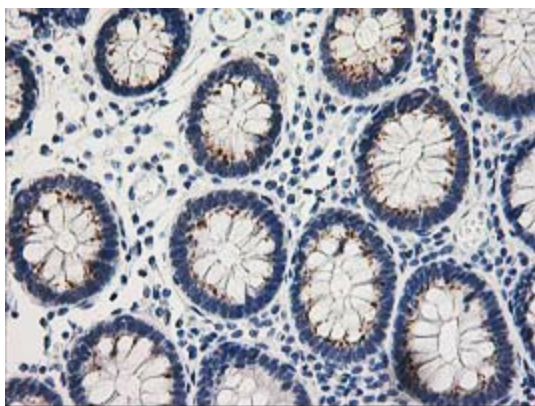
HEK293T cells were transfected with the pCMV6-ENTRY control (Left lane) or pCMV6-ENTRY TOMM34 ([RC201083], Right lane) cDNA for 48 hrs and lysed. Equivalent amounts of cell lysates (5 ug per lane) were separated by SDS-PAGE and immunoblotted with anti-TOMM34. Positive lysates [LY416405] (100ug) and [LC416405] (20ug) can be purchased separately from OriGene.



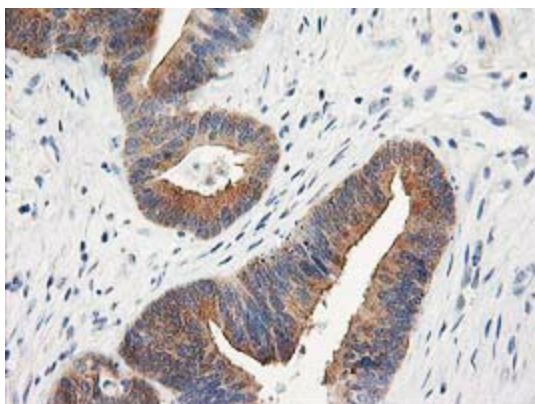
Western blot analysis of extracts (35ug) from 9 different cell lines by using anti-TOMM34 monoclonal antibody.



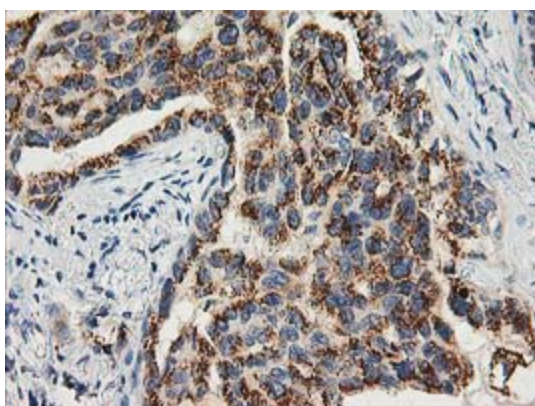
Immunohistochemical staining of paraffin-embedded Adenocarcinoma of Human breast tissue using anti-TOMM34 mouse monoclonal antibody. (Heat-induced epitope retrieval by 10mM citric buffer, pH6.0, 100°C for 10min, TA503090)



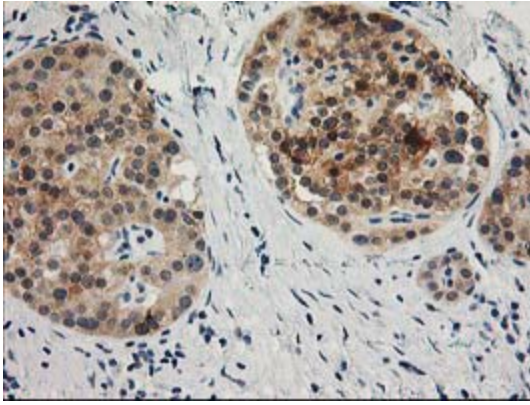
Immunohistochemical staining of paraffin-embedded Human colon tissue within the normal limits using anti-TOMM34 mouse monoclonal antibody. (Heat-induced epitope retrieval by 10mM citric buffer, pH6.0, 100°C for 10min, TA503090)



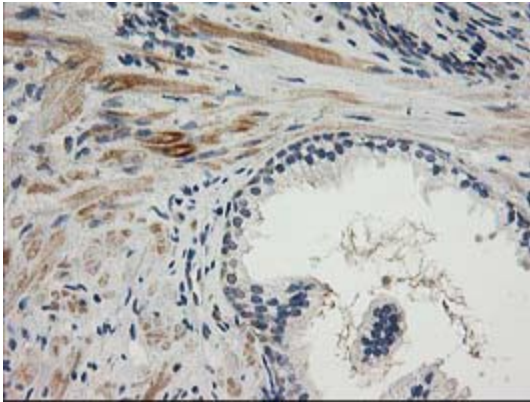
Immunohistochemical staining of paraffin-embedded Adenocarcinoma of Human colon tissue using anti-TOMM34 mouse monoclonal antibody. (Heat-induced epitope retrieval by 10mM citric buffer, pH6.0, 100°C for 10min, TA503090)



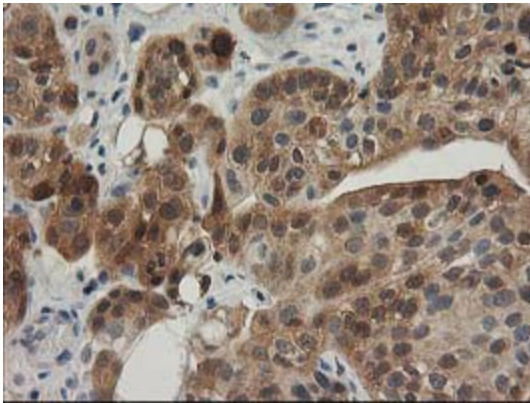
Immunohistochemical staining of paraffin-embedded Carcinoma of Human lung tissue using anti-TOMM34 mouse monoclonal antibody. (Heat-induced epitope retrieval by 10mM citric buffer, pH6.0, 100°C for 10min, TA503090)



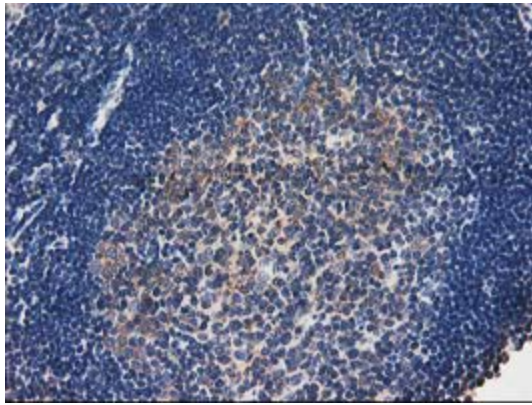
Immunohistochemical staining of paraffin-embedded Carcinoma of Human pancreas tissue using anti-TOMM34 mouse monoclonal antibody. (Heat-induced epitope retrieval by 10mM citric buffer, pH6.0, 100°C for 10min, TA503090)



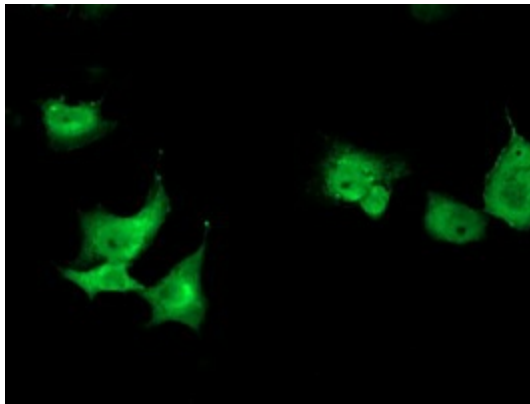
Immunohistochemical staining of paraffin-embedded Human prostate tissue within the normal limits using anti-TOMM34 mouse monoclonal antibody. (Heat-induced epitope retrieval by 10mM citric buffer, pH6.0, 100°C for 10min, TA503090)



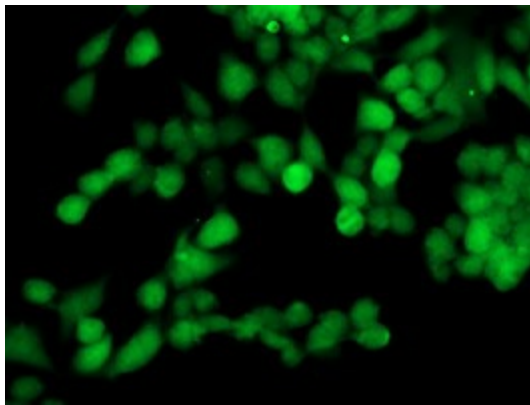
Immunohistochemical staining of paraffin-embedded Carcinoma of Human bladder tissue using anti-TOMM34 mouse monoclonal antibody. (Heat-induced epitope retrieval by 10mM citric buffer, pH6.0, 100°C for 10min, TA503090)



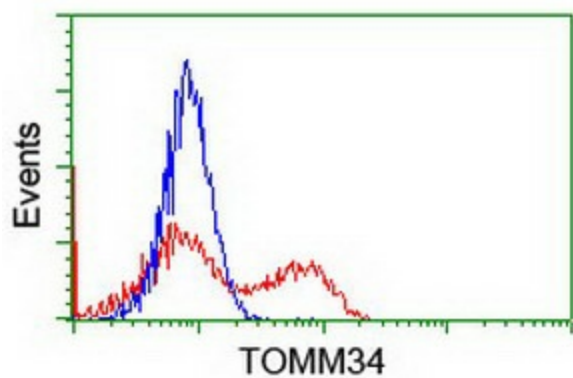
Immunohistochemical staining of paraffin-embedded Human lymph node tissue within the normal limits using anti-TOMM34 mouse monoclonal antibody. (Heat-induced epitope retrieval by 10mM citric buffer, pH6.0, 100°C for 10min, TA503090)



Anti-TOMM34 mouse monoclonal antibody (TA503090) immunofluorescent staining of COS7 cells transiently transfected by pCMV6-ENTRY TOMM34 ([RC201083]).



Immunofluorescent staining of HeLa cells using anti-TOMM34 mouse monoclonal antibody (TA503090).



HEK293T cells transfected with either [RC201083] overexpress plasmid (Red) or empty vector control plasmid (Blue) were immunostained by anti-TOMM34 antibody (TA503090), and then analyzed by flow cytometry.