

Product datasheet for TA503147

GATM Mouse Monoclonal Antibody [Clone ID: OT11C9]

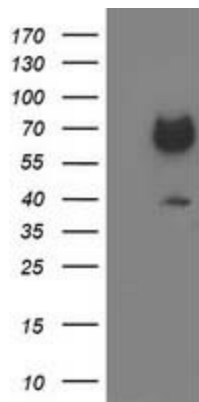
Product data:

Product Type:	Primary Antibodies
Clone Name:	OT11C9
Applications:	FC, IF, IHC, WB
Recommend Dilution:	WB 1:500~2000, IHC 1:150, IF 1:100, FLOW 1:100
Reactivity:	Human
Host:	Mouse
Isotype:	IgG1
Clonality:	Monoclonal
Immunogen:	Full length human recombinant protein of human GATM(NP_001473) produced in HEK293 cell.
Formulation:	PBS (PH 7.3) containing 1% BSA, 50% glycerol and 0.02% sodium azide.
Concentration:	1 mg/ml
Purification:	Purified from mouse ascites fluids or tissue culture supernatant by affinity chromatography (protein A/G)
Predicted Protein Size:	44.2 kDa
Gene Name:	glycine amidinotransferase
Database Link:	NP_001473 Entrez Gene 2628 Human
Background:	This gene encodes a mitochondrial enzyme that belongs to the amidinotransferase family. This enzyme is involved in creatine biosynthesis, whereby it catalyzes the transfer of a guanido group from L-arginine to glycine, resulting in guanidinoacetic acid, the immediate precursor of creatine. Mutations in this gene cause arginine:glycine amidinotransferase deficiency, an inborn error of creatine synthesis characterized by mental retardation, language impairment, and behavioral disorders. [provided by RefSeq]
Synonyms:	AGAT; AT; CCDS3
Protein Families:	Druggable Genome
Protein Pathways:	Arginine and proline metabolism, Glycine, serine and threonine metabolism, Metabolic pathways

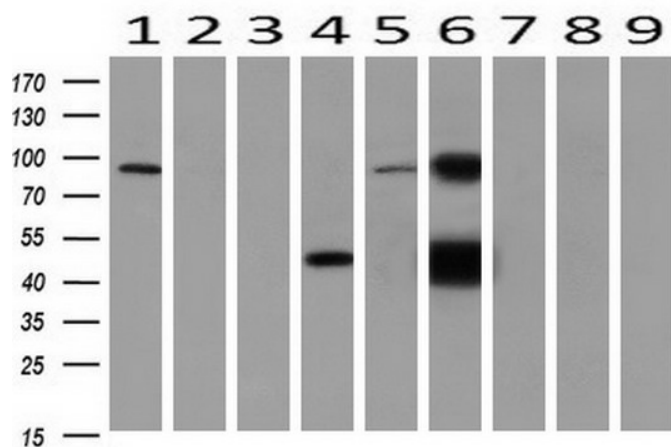


[View online »](#)

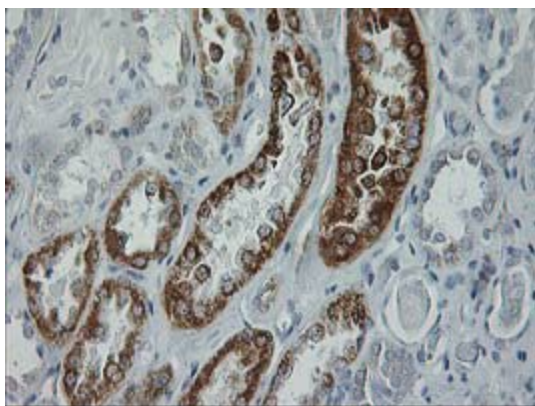
Product images:



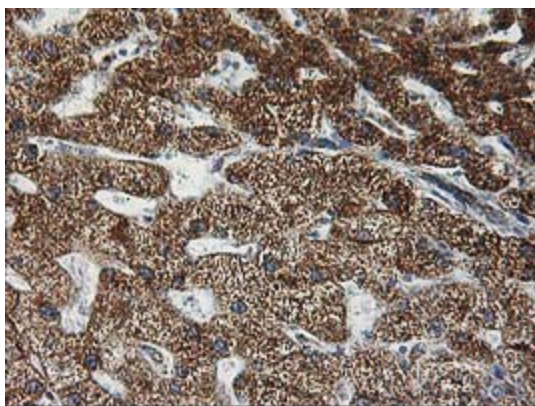
HEK293T cells were transfected with the pCMV6-ENTRY control (Left lane) or pCMV6-ENTRY GATM [RC200474], Right lane) cDNA for 48 hrs and lysed. Equivalent amounts of cell lysates (5 ug per lane) were separated by SDS-PAGE and immunoblotted with anti-GATM. Positive lysates [LY419923] (100ug) and [LC419923] (20ug) can be purchased separately from OriGene.



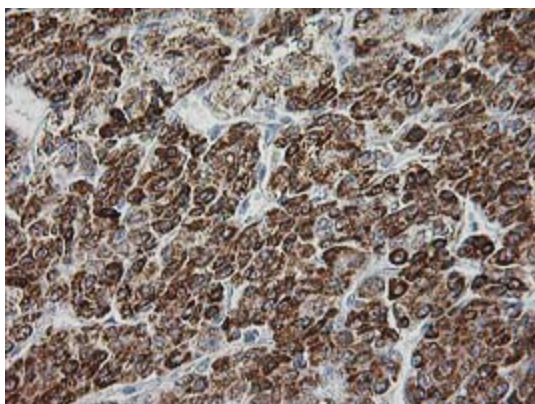
Western blot analysis of extracts (10ug) from 9 Human tissue by using anti-GATM monoclonal antibody at 1:200 (1: Testis; 2: Omentum; 3: Uterus; 4: Breast; 5: Brain; 6: Liver; 7: Ovary; 8: Thyroid gland; 9: colon).



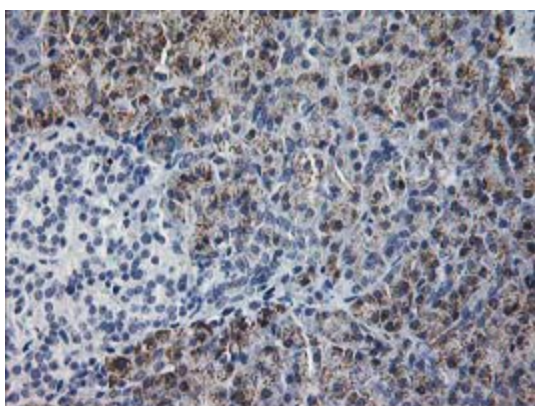
Immunohistochemical staining of paraffin-embedded Human Kidney tissue within the normal limits using anti-GATM mouse monoclonal antibody. (Heat-induced epitope retrieval by 10mM citric buffer, pH6.0, 100°C for 10min, TA503147)



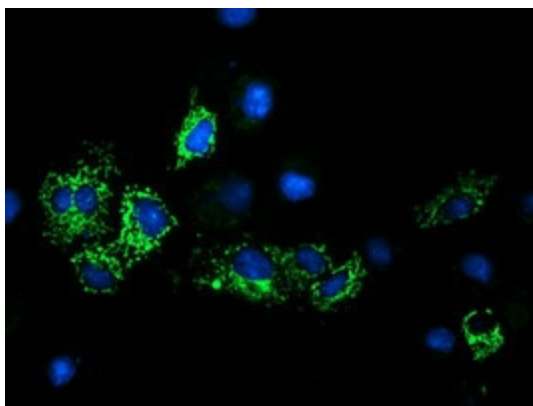
Immunohistochemical staining of paraffin-embedded Human liver tissue within the normal limits using anti-GATM mouse monoclonal antibody. (Heat-induced epitope retrieval by 10mM citric buffer, pH6.0, 100°C for 10min, TA503147)



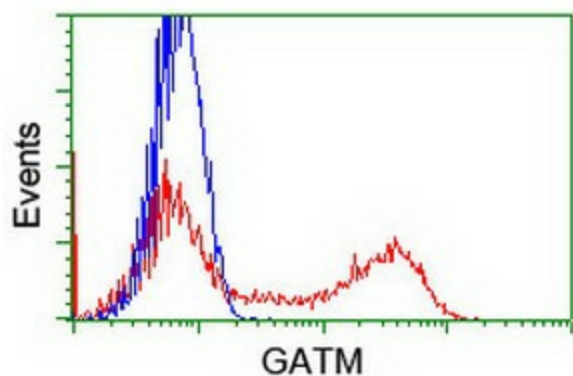
Immunohistochemical staining of paraffin-embedded Carcinoma of Human liver tissue using anti-GATM mouse monoclonal antibody. (Heat-induced epitope retrieval by 10mM citric buffer, pH6.0, 100°C for 10min, TA503147)



Immunohistochemical staining of paraffin-embedded Human pancreas tissue within the normal limits using anti-GATM mouse monoclonal antibody. (Heat-induced epitope retrieval by 10mM citric buffer, pH6.0, 100°C for 10min, TA503147)



Anti-GATM mouse monoclonal antibody (TA503147) immunofluorescent staining of COS7 cells transiently transfected by pCMV6-ENTRY GATM ([RC200474]).



HEK293T cells transfected with either [RC200474] overexpress plasmid (Red) or empty vector control plasmid (Blue) were immunostained by anti-GATM antibody (TA503147), and then analyzed by flow cytometry.