

## Product datasheet for TA503230

### PBX1 Mouse Monoclonal Antibody [Clone ID: OTI4D1]

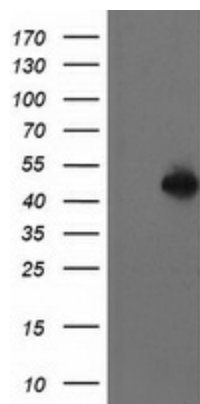
#### Product data:

Product Type:	Primary Antibodies
Clone Name:	OTI4D1
Applications:	FC, IF, WB
Recommend Dilution:	WB 1:2000, IF 1:100, FLOW 1:100
Reactivity:	Human
Host:	Mouse
Isotype:	IgG1
Clonality:	Monoclonal
Immunogen:	Full length human recombinant protein of human PBX1(NP_002576) produced in HEK293 cell.
Formulation:	PBS (PH 7.3) containing 1% BSA, 50% glycerol and 0.02% sodium azide.
Concentration:	1 mg/ml
Purification:	Purified from mouse ascites fluids or tissue culture supernatant by affinity chromatography (protein A/G)
Predicted Protein Size:	46.4 kDa
Gene Name:	PBX homeobox 1
Database Link:	<a href="#">NP_002576 Entrez Gene 5087 Human</a>
Background:	This gene encodes a nuclear protein that belongs to the PBX homeobox family of transcriptional factors. Studies in mice suggest that this gene may be involved in the regulation of osteogenesis, and required for skeletal patterning and programming. A chromosomal translocation, t(1;19) involving this gene and TCF3/E2A gene, is associated with pre-B-cell acute lymphoblastic leukemia. The resulting fusion protein, in which the DNA binding domain of E2A is replaced by the DNA binding domain of this protein, transforms cells by constitutively activating transcription of genes regulated by the PBX protein family. Alternatively spliced transcript variants encoding different isoforms have been found for this gene. [provided by RefSeq]
Synonyms:	DKFZp686B09108; MGC126627
Protein Families:	Druggable Genome, Stem cell - Pluripotency, Transcription Factors

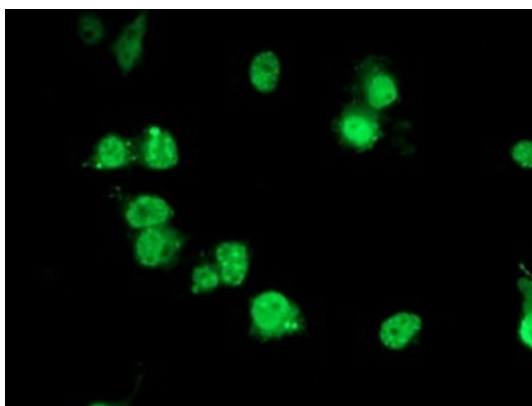


[View online »](#)

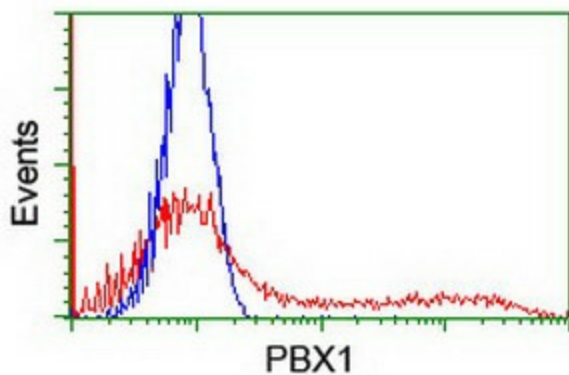
## Product images:



HEK293T cells were transfected with the pCMV6-ENTRY control (Left lane) or pCMV6-ENTRY PBX1 ([RC210944], Right lane) cDNA for 48 hrs and lysed. Equivalent amounts of cell lysates (5 ug per lane) were separated by SDS-PAGE and immunoblotted with anti-PBX1. Positive lysates [LY400918] (100ug) and [LC400918] (20ug) can be purchased separately from OriGene.



Anti-PBX1 mouse monoclonal antibody (TA503230) immunofluorescent staining of COS7 cells transiently transfected by pCMV6-ENTRY PBX1 ([RC210944]).



HEK293T cells transfected with either [RC210944] overexpress plasmid (Red) or empty vector control plasmid (Blue) were immunostained by anti-PBX1 antibody (TA503230), and then analyzed by flow cytometry.