

Product datasheet for TA503693

AIPL1 Mouse Monoclonal Antibody [Clone ID: OTI3B4]

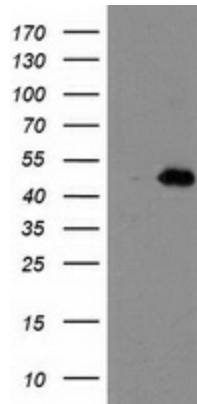
Product data:

Product Type:	Primary Antibodies
Clone Name:	OTI3B4
Applications:	FC, IF, IHC, WB
Recommend Dilution:	WB 1:500~2000, IHC 1:150, IF 1:100, FLOW 1:100
Reactivity:	Human
Host:	Mouse
Isotype:	IgG1
Clonality:	Monoclonal
Immunogen:	Full length human recombinant protein of human AIPL1(NP_055151) produced in HEK293T cell.
Formulation:	PBS (PH 7.3) containing 1% BSA, 50% glycerol and 0.02% sodium azide.
Concentration:	1 mg/ml
Purification:	Purified from mouse ascites fluids or tissue culture supernatant by affinity chromatography (protein A/G)
Predicted Protein Size:	43.7 kDa
Gene Name:	aryl hydrocarbon receptor interacting protein like 1
Database Link:	NP_055151 Entrez Gene 23746 Human
Background:	Leber congenital amaurosis (LCA) accounts for at least 5% of all inherited retinal disease and is the most severe inherited retinopathy with the earliest age of onset. Individuals affected with LCA are diagnosed at birth or in the first few months of life with severely impaired vision or blindness, nystagmus and an abnormal or flat electroretinogram. The photoreceptor/pineal -expressed gene, AIPL1, encoding aryl-hydrocarbon interacting protein-like 1, was mapped within the LCA4 candidate region. The protein contains three tetratricopeptide motifs, consistent with nuclear transport or chaperone activity. AIPL1 mutations may cause approximately 20% of recessive LCA. [provided by RefSeq]
Synonyms:	AIPL2; LCA4
Protein Families:	Druggable Genome

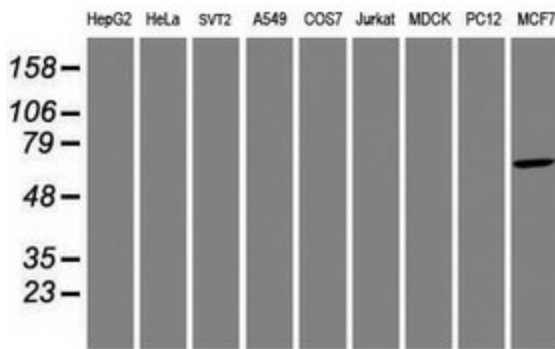


[View online »](#)

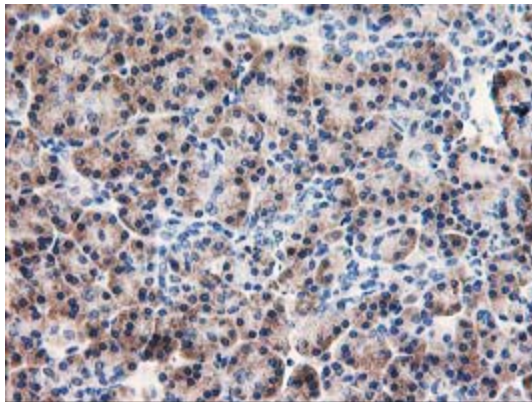
Product images:



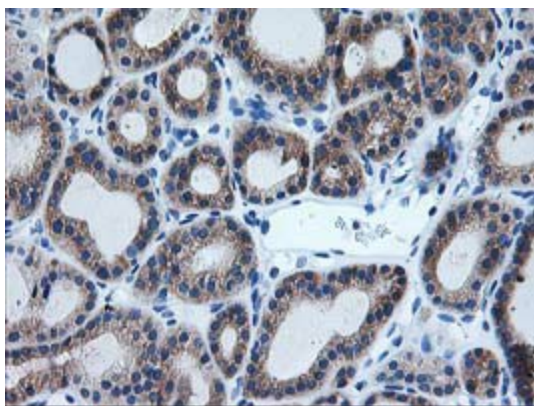
HEK293T cells were transfected with the pCMV6-ENTRY control (Left lane) or pCMV6-ENTRY AIPL1 ([RC204079], Right lane) cDNA for 48 hrs and lysed. Equivalent amounts of cell lysates (5 ug per lane) were separated by SDS-PAGE and immunoblotted with anti-AIPL1. Positive lysates [LY415353] (100ug) and [LC415353] (20ug) can be purchased separately from OriGene.



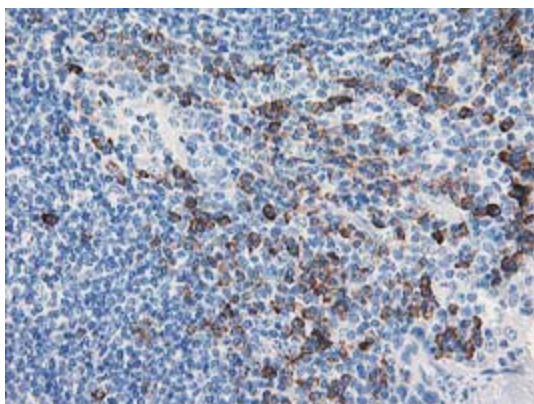
Western blot analysis of extracts (35ug) from 9 different cell lines by using anti-AIPL1 monoclonal antibody.



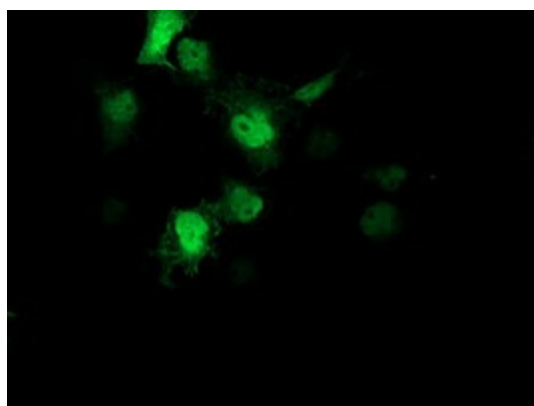
Immunohistochemical staining of paraffin-embedded Human pancreas tissue within the normal limits using anti-AIPL1 mouse monoclonal antibody. (Heat-induced epitope retrieval by 10mM citric buffer, pH6.0, 100°C for 10min, TA503693)



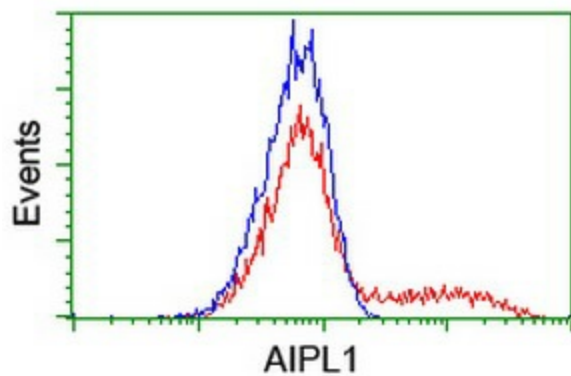
Immunohistochemical staining of paraffin-embedded Carcinoma of Human thyroid tissue using anti-AIPL1 mouse monoclonal antibody. (Heat-induced epitope retrieval by 10mM citric buffer, pH6.0, 100°C for 10min, TA503693)



Immunohistochemical staining of paraffin-embedded Human lymph node tissue within the normal limits using anti-AIPL1 mouse monoclonal antibody. (Heat-induced epitope retrieval by 10mM citric buffer, pH6.0, 100°C for 10min, TA503693)



Anti-AIPL1 mouse monoclonal antibody (TA503693) immunofluorescent staining of COS7 cells transiently transfected by pCMV6-ENTRY AIPL1 ([RC204079]).



HEK293T cells transfected with either [RC204079] overexpress plasmid (Red) or empty vector control plasmid (Blue) were immunostained by anti-AIPL1 antibody (TA503693), and then analyzed by flow cytometry.