

Product datasheet for **TA505071**

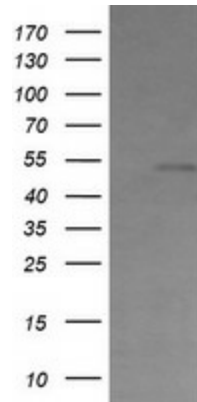
Cbl c (CBLC) Mouse Monoclonal Antibody [Clone ID: OTI3B4]

Product data:

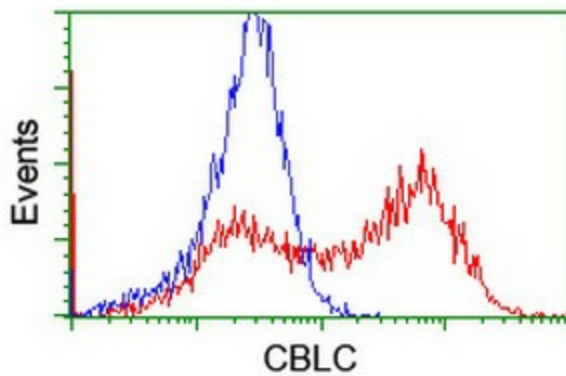
Product Type:	Primary Antibodies
Clone Name:	OTI3B4
Applications:	FC, WB
Recommend Dilution:	WB 1:500, FLOW 1:100
Reactivity:	Human
Host:	Mouse
Isotype:	IgG2b
Clonality:	Monoclonal
Immunogen:	Human recombinant protein fragment corresponding to amino acids 244-474 of human CBLC(NP_036248) produced in E.coli.
Formulation:	PBS (PH 7.3) containing 1% BSA, 50% glycerol and 0.02% sodium azide.
Concentration:	1 mg/ml
Purification:	Purified from mouse ascites fluids or tissue culture supernatant by affinity chromatography (protein A/G)
Predicted Protein Size:	52.3 kDa
Gene Name:	Cbl proto-oncogene C
Database Link:	NP_036248 Entrez Gene 23624 Human
Background:	This gene encodes a member of the Cbl family of E3 ubiquitin ligases. Cbl proteins play important roles in cell signaling through the ubiquitination and subsequent downregulation of tyrosine kinases. Expression of this gene may be restricted to epithelial cells, and alternatively spliced transcript variants encoding multiple isoforms have been observed for this gene. [provided by RefSeq, Feb 2012]
Synonyms:	CBL-3; CBL-SL; RNF57
Protein Families:	Druggable Genome
Protein Pathways:	Chronic myeloid leukemia, Endocytosis, ErbB signaling pathway, Insulin signaling pathway, Jak-STAT signaling pathway, Pathways in cancer, T cell receptor signaling pathway, Ubiquitin mediated proteolysis



[View online »](#)

Product images:

HEK293T cells were transfected with the pCMV6-ENTRY control (Left lane) or pCMV6-ENTRY CBLC [RC205130], Right lane) cDNA for 48 hrs and lysed. Equivalent amounts of cell lysates (5 ug per lane) were separated by SDS-PAGE and immunoblotted with anti-CBLC. Positive lysates [LY402148] (100ug) and [LC402148] (20ug) can be purchased separately from OriGene.



HEK293T cells transfected with either [RC205130] overexpress plasmid (Red) or empty vector control plasmid (Blue) were immunostained by anti-CBLC antibody (TA505071), and then analyzed by flow cytometry.