

Product datasheet for **TA505074**

SCYL1BP1 (GORAB) Mouse Monoclonal Antibody [Clone ID: OTI4F11]

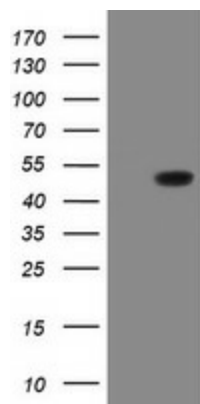
Product data:

Product Type:	Primary Antibodies
Clone Name:	OTI4F11
Applications:	IHC, WB
Recommend Dilution:	WB 1:2000, IHC 1:150
Reactivity:	Human
Host:	Mouse
Isotype:	IgG1
Clonality:	Monoclonal
Immunogen:	Human recombinant protein fragment corresponding to amino acids 35-394 of human GORAB(NP_689494) produced in E.coli.
Formulation:	PBS (PH 7.3) containing 1% BSA, 50% glycerol and 0.02% sodium azide.
Concentration:	1 mg/ml
Purification:	Purified from mouse ascites fluids or tissue culture supernatant by affinity chromatography (protein A/G)
Predicted Protein Size:	44.8 kDa
Gene Name:	golgin, RAB6 interacting
Database Link:	NP_689494 Entrez Gene 92344 Human
Background:	This gene encodes a member of the golgin family, a group of coiled-coil proteins localized to the Golgi. The encoded protein may function in the secretory pathway. The encoded protein, which also localizes to the cytoplasm, was identified by interactions with the N-terminal kinase-like protein, and thus it may function in mitosis. Mutations in this gene have been associated with geroderma osteodysplastica. Alternatively spliced transcript variants have been described. [provided by RefSeq]
Synonyms:	GO; NTKLBP1; SCYL1BP1

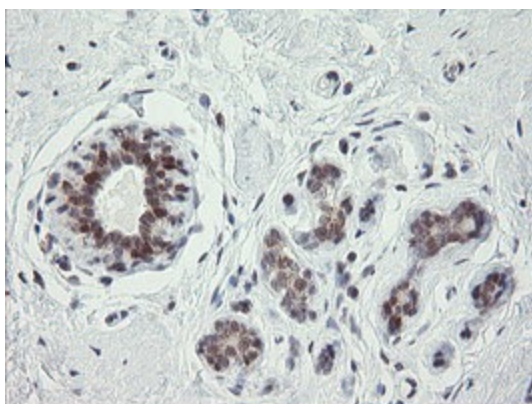


[View online »](#)

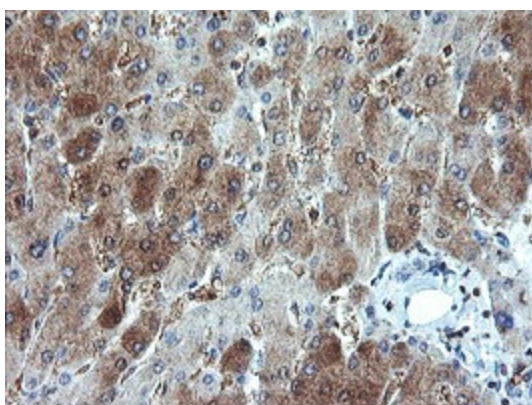
Product images:



HEK293T cells were transfected with the pCMV6-ENTRY control (Left lane) or pCMV6-ENTRY GORAB ([RC212883], Right lane) cDNA for 48 hrs and lysed. Equivalent amounts of cell lysates (5 ug per lane) were separated by SDS-PAGE and immunoblotted with anti-GORAB. Positive lysates [LY407701] (100ug) and [LC407701] (20ug) can be purchased separately from OriGene.



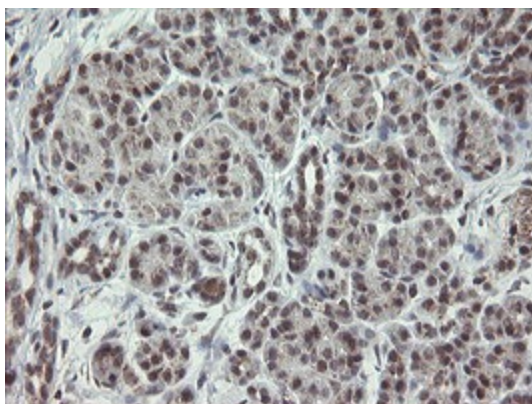
Immunohistochemical staining of paraffin-embedded Human breast tissue within the normal limits using anti-GORAB mouse monoclonal antibody. (Heat-induced epitope retrieval by 10mM citric buffer, pH6.0, 100°C for 10min, TA505074)



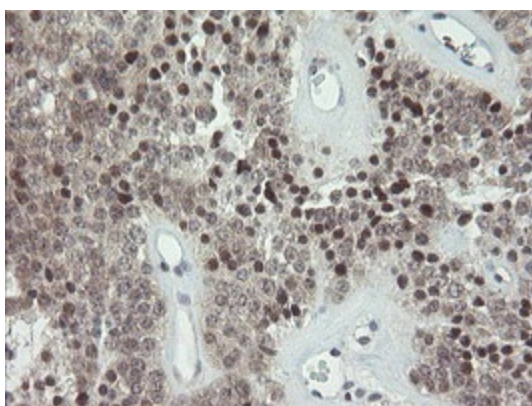
Immunohistochemical staining of paraffin-embedded Human liver tissue within the normal limits using anti-GORAB mouse monoclonal antibody. (Heat-induced epitope retrieval by 10mM citric buffer, pH6.0, 100°C for 10min, TA505074)



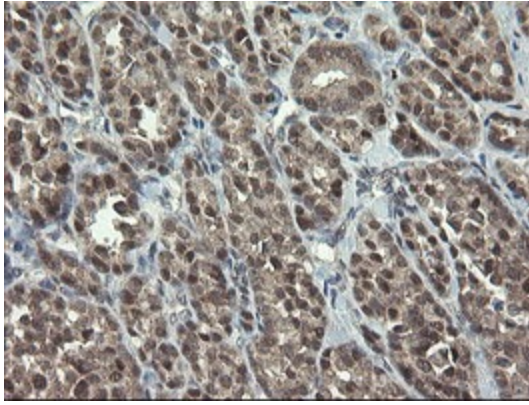
Immunohistochemical staining of paraffin-embedded Human Ovary tissue within the normal limits using anti-GORAB mouse monoclonal antibody. (Heat-induced epitope retrieval by 10mM citric buffer, pH6.0, 100°C for 10min, TA505074)



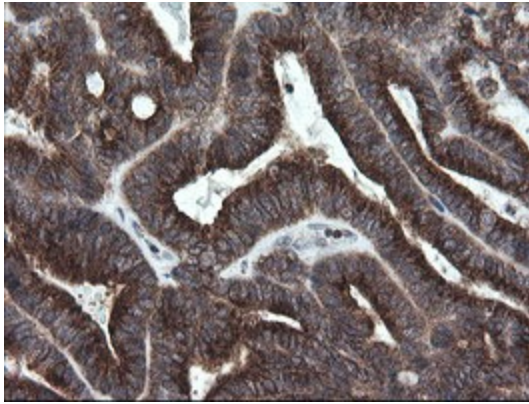
Immunohistochemical staining of paraffin-embedded Human pancreas tissue within the normal limits using anti-GORAB mouse monoclonal antibody. (Heat-induced epitope retrieval by 10mM citric buffer, pH6.0, 100°C for 10min, TA505074)



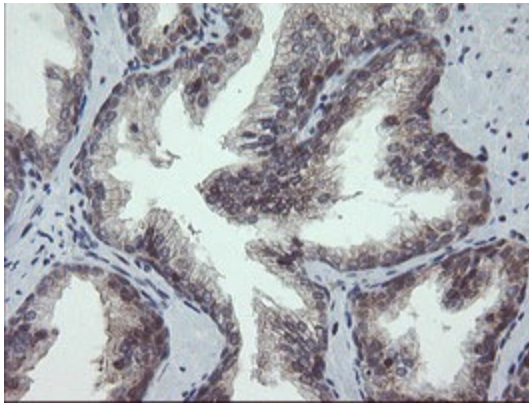
Immunohistochemical staining of paraffin-embedded Carcinoma of Human pancreas tissue using anti-GORAB mouse monoclonal antibody. (Heat-induced epitope retrieval by 10mM citric buffer, pH6.0, 100°C for 10min, TA505074)



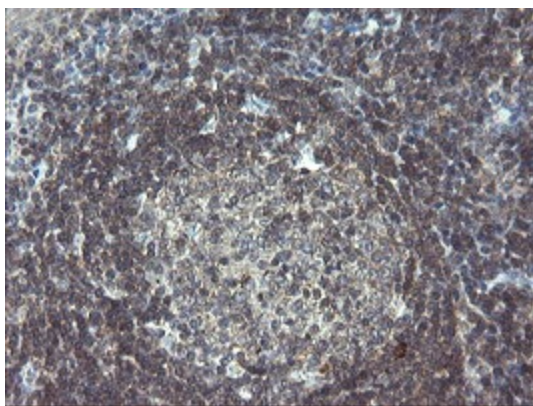
Immunohistochemical staining of paraffin-embedded Carcinoma of Human thyroid tissue using anti-GORAB mouse monoclonal antibody. (Heat-induced epitope retrieval by 10mM citric buffer, pH6.0, 100°C for 10min, TA505074)



Immunohistochemical staining of paraffin-embedded Adenocarcinoma of Human endometrium tissue using anti-GORAB mouse monoclonal antibody. (Heat-induced epitope retrieval by 10mM citric buffer, pH6.0, 100°C for 10min, TA505074)



Immunohistochemical staining of paraffin-embedded Human prostate tissue within the normal limits using anti-GORAB mouse monoclonal antibody. (Heat-induced epitope retrieval by 10mM citric buffer, pH6.0, 100°C for 10min, TA505074)



Immunohistochemical staining of paraffin-embedded Human tonsil within the normal limits using anti-GORAB mouse monoclonal antibody. (Heat-induced epitope retrieval by 10mM citric buffer, pH6.0, 100°C for 10min, TA505074)