

Product datasheet for TA505233

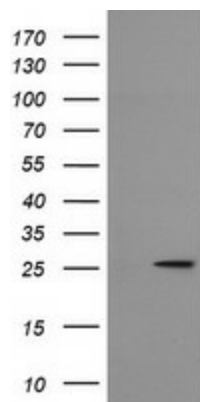
MRPS34 Mouse Monoclonal Antibody [Clone ID: OTI4B9]

Product data:

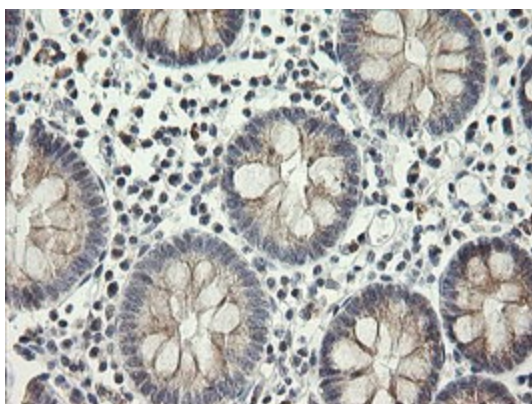
Product Type:	Primary Antibodies
Clone Name:	OTI4B9
Applications:	IF, IHC, WB
Recommend Dilution:	WB 1:200, IHC 1:150, IF 1:100
Reactivity:	Human
Host:	Mouse
Isotype:	IgG1
Clonality:	Monoclonal
Immunogen:	Full length human recombinant protein of human MRPS34(NP_076425) produced in E.coli.
Formulation:	PBS (PH 7.3) containing 1% BSA, 50% glycerol and 0.02% sodium azide.
Concentration:	1 mg/ml
Purification:	Purified from mouse ascites fluids or tissue culture supernatant by affinity chromatography (protein A/G)
Predicted Protein Size:	25.5 kDa
Gene Name:	mitochondrial ribosomal protein S34
Database Link:	NP_076425 Entrez Gene 65993 Human
Background:	Mammalian mitochondrial ribosomal proteins are encoded by nuclear genes and help in protein synthesis within the mitochondrion. Mitochondrial ribosomes (mitoribosomes) consist of a small 28S subunit and a large 39S subunit. They have an estimated 75% protein to rRNA composition compared to prokaryotic ribosomes, where this ratio is reversed. Another difference between mammalian mitoribosomes and prokaryotic ribosomes is that the latter contain a 5S rRNA. Among different species, the proteins comprising the mitoribosome differ greatly in sequence, and sometimes in biochemical properties, which prevents easy recognition by sequence homology. This gene encodes a 28S subunit protein. Alternate splice variants of this gene have been described but their full-length nature has not been determined. [provided by RefSeq, Jul 2008]
Synonyms:	MRP-S12; MRP-S34; MRPS12



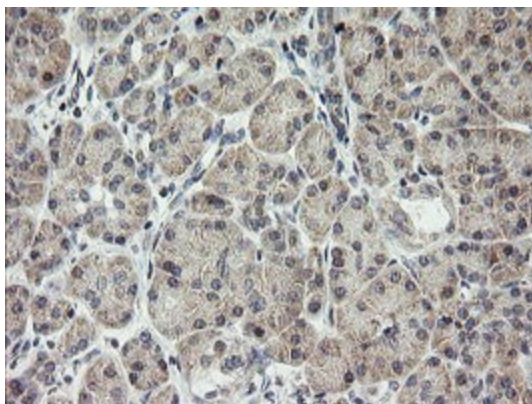
[View online »](#)

Product images:

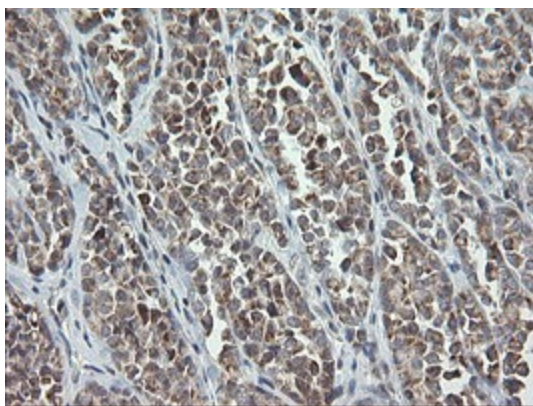
HEK293T cells were transfected with the pCMV6-ENTRY control (Left lane) or pCMV6-ENTRY MRPS34 ([RC200834], Right lane) cDNA for 48 hrs and lysed. Equivalent amounts of cell lysates (5 ug per lane) were separated by SDS-PAGE and immunoblotted with anti-MRPS34. Positive lysates [LY411441] (100ug) and [LC411441] (20ug) can be purchased separately from OriGene.



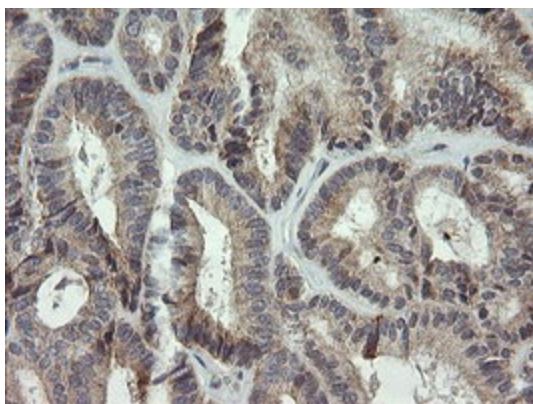
Immunohistochemical staining of paraffin-embedded Human colon tissue within the normal limits using anti-MRPS34 mouse monoclonal antibody. (Heat-induced epitope retrieval by 10mM citric buffer, pH6.0, 120°C for 3min, TA505233)



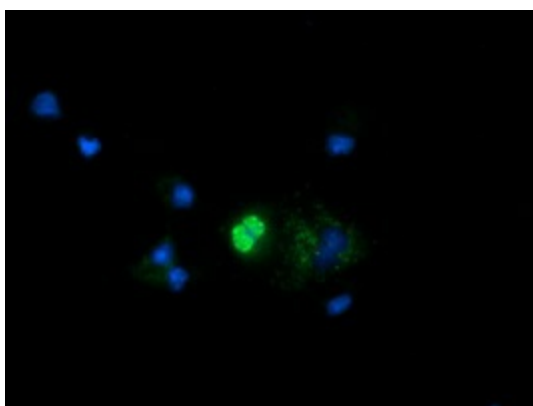
Immunohistochemical staining of paraffin-embedded Human pancreas tissue within the normal limits using anti-MRPS34 mouse monoclonal antibody. (Heat-induced epitope retrieval by 10mM citric buffer, pH6.0, 120°C for 3min, TA505233)



Immunohistochemical staining of paraffin-embedded Carcinoma of Human thyroid tissue using anti-MRPS34 mouse monoclonal antibody. (Heat-induced epitope retrieval by 10mM citric buffer, pH6.0, 120°C for 3min, TA505233)



Immunohistochemical staining of paraffin-embedded Adenocarcinoma of Human endometrium tissue using anti-MRPS34 mouse monoclonal antibody. (Heat-induced epitope retrieval by 10mM citric buffer, pH6.0, 120°C for 3min, TA505233)



Anti-MRPS34 mouse monoclonal antibody (TA505233) immunofluorescent staining of COS7 cells transiently transfected by pCMV6-ENTRY MRPS34 ([RC200834]).