

## Product datasheet for TA506222

### Von Hippel Lindau (VHL) Mouse Monoclonal Antibody [Clone ID: OT11E1]

#### Product data:

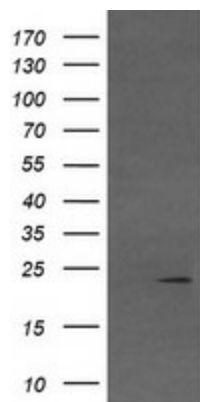
Product Type:	Primary Antibodies
Clone Name:	OT11E1
Applications:	IHC, WB
Recommend Dilution:	WB 1:4000, IHC 1:150
Reactivity:	Human
Host:	Mouse
Isotype:	IgG2b
Clonality:	Monoclonal
Immunogen:	Full length human recombinant protein of human VHL(NP_000542) produced in HEK293T cell.
Formulation:	PBS (PH 7.3) containing 1% BSA, 50% glycerol and 0.02% sodium azide.
Concentration:	1 mg/ml
Purification:	Purified from mouse ascites fluids or tissue culture supernatant by affinity chromatography (protein A/G)
Predicted Protein Size:	24 kDa
Gene Name:	von Hippel-Lindau tumor suppressor
Database Link:	<a href="#">NP_000542 Entrez Gene 7428 Human</a>
Background:	Von Hippel-Lindau syndrome (VHL) is a dominantly inherited familial cancer syndrome predisposing to a variety of malignant and benign tumors. A germline mutation of this gene is the basis of familial inheritance of VHL syndrome. The protein encoded by this gene is a component of the protein complex that includes elongin B, elongin C, and cullin-2, and possesses ubiquitin ligase E3 activity. This protein is involved in the ubiquitination and degradation of hypoxia-inducible-factor (HIF), which is a transcription factor that plays a central role in the regulation of gene expression by oxygen. RNA polymerase II subunit POLR2G/RPB7 is also reported to be a target of this protein. Alternatively spliced transcript variants encoding distinct isoforms have been observed. [provided by RefSeq, Jul 2008]
Synonyms:	HRCA1; pVHL; RCA1; VHL1
Protein Families:	Druggable Genome, Transcription Factors



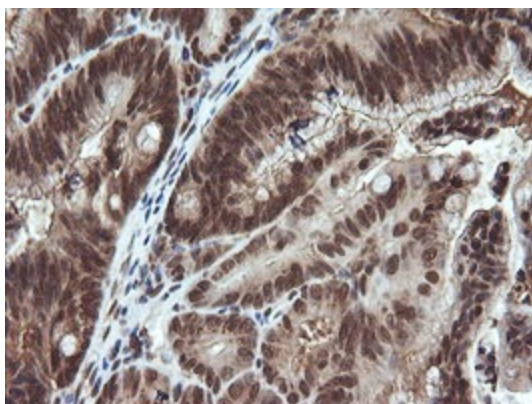
[View online »](#)

Protein Pathways: Pathways in cancer, Renal cell carcinoma, Ubiquitin mediated proteolysis

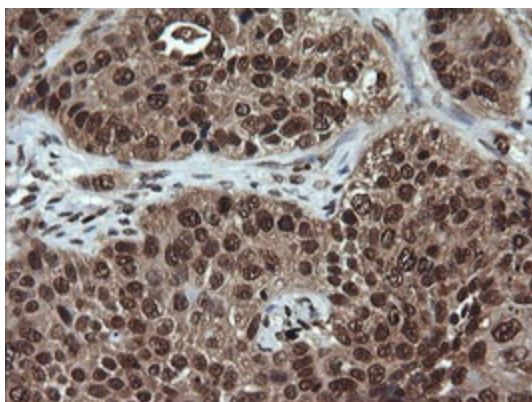
### Product images:



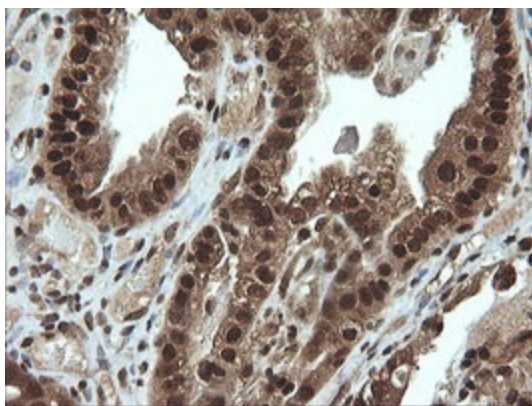
HEK293T cells were transfected with the pCMV6-ENTRY control (Left lane) or pCMV6-ENTRY VHL ([RC216151], Right lane) cDNA for 48 hrs and lysed. Equivalent amounts of cell lysates (5 ug per lane) were separated by SDS-PAGE and immunoblotted with anti-VHL. Positive lysates [LY400188] (100ug) and [LC400188] (20ug) can be purchased separately from OriGene.



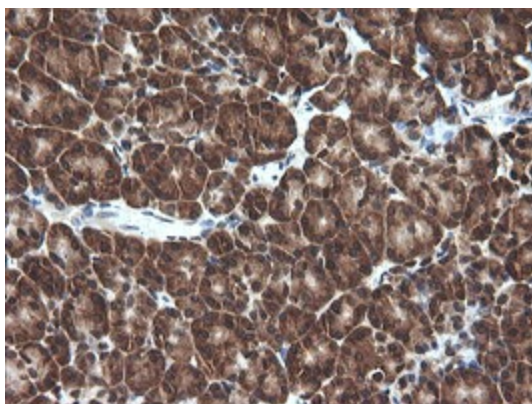
Immunohistochemical staining of paraffin-embedded Adenocarcinoma of Human colon tissue using anti-VHL mouse monoclonal antibody. (Heat-induced epitope retrieval by 10mM citric buffer, pH6.0, 120°C for 3min, TA506222)



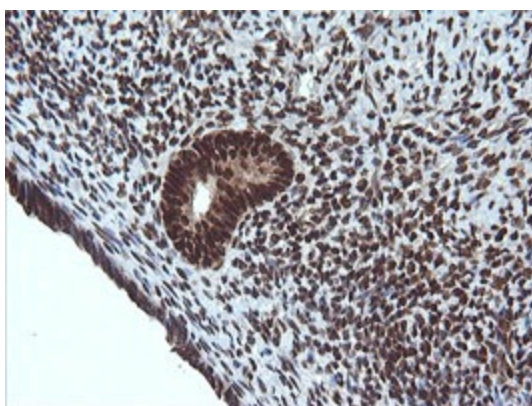
Immunohistochemical staining of paraffin-embedded Carcinoma of Human lung tissue using anti-VHL mouse monoclonal antibody. (Heat-induced epitope retrieval by 10mM citric buffer, pH6.0, 120°C for 3min, TA506222)



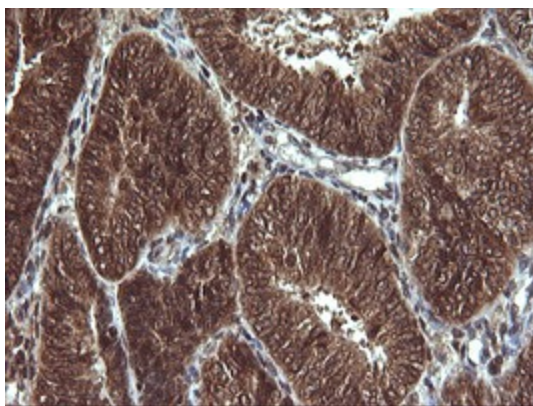
Immunohistochemical staining of paraffin-embedded Adenocarcinoma of Human ovary tissue using anti-VHL mouse monoclonal antibody. (Heat-induced epitope retrieval by 10mM citric buffer, pH6.0, 120°C for 3min, TA506222)



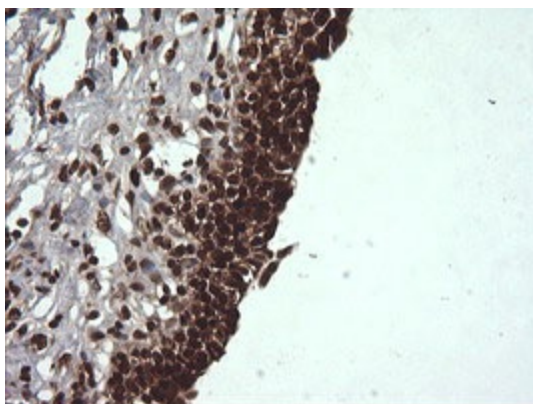
Immunohistochemical staining of paraffin-embedded Human pancreas tissue within the normal limits using anti-VHL mouse monoclonal antibody. (Heat-induced epitope retrieval by 10mM citric buffer, pH6.0, 120°C for 3min, TA506222)



Immunohistochemical staining of paraffin-embedded Human endometrium tissue within the normal limits using anti-VHL mouse monoclonal antibody. (Heat-induced epitope retrieval by 10mM citric buffer, pH6.0, 120°C for 3min, TA506222)



Immunohistochemical staining of paraffin-embedded Adenocarcinoma of Human endometrium tissue using anti-VHL mouse monoclonal antibody. (Heat-induced epitope retrieval by 10mM citric buffer, pH6.0, 120°C for 3min, TA506222)



Immunohistochemical staining of paraffin-embedded Human bladder tissue within the normal limits using anti-VHL mouse monoclonal antibody. (Heat-induced epitope retrieval by 10mM citric buffer, pH6.0, 120°C for 3min, TA506222)