

## Product datasheet for **TA800099**

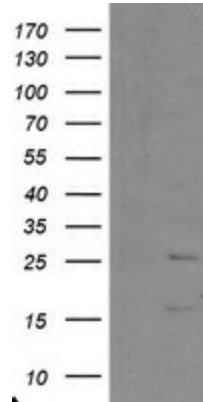
### **TMS1 (PYCARD) Mouse Monoclonal Antibody [Clone ID: OTI1H6]**

#### **Product data:**

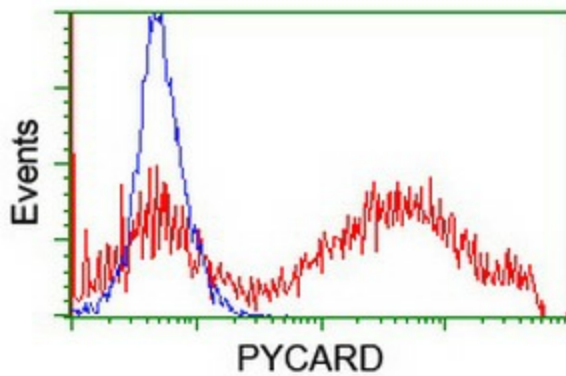
<b>Product Type:</b>	Primary Antibodies
<b>Clone Name:</b>	OTI1H6
<b>Applications:</b>	FC, WB
<b>Recommend Dilution:</b>	WB 1:2000, FLOW 1:100
<b>Reactivity:</b>	Human
<b>Host:</b>	Mouse
<b>Isotype:</b>	IgG1
<b>Clonality:</b>	Monoclonal
<b>Immunogen:</b>	Full length human recombinant protein of human PYCARD (NP_037390) produced in E.coli.
<b>Formulation:</b>	PBS (PH 7.3) containing 1% BSA, 50% glycerol and 0.02% sodium azide.
<b>Concentration:</b>	1 mg/ml
<b>Purification:</b>	Purified from mouse ascites fluids or tissue culture supernatant by affinity chromatography (protein A/G)
<b>Predicted Protein Size:</b>	21.4 kDa
<b>Gene Name:</b>	PYD and CARD domain containing
<b>Database Link:</b>	<a href="#">NP_037390 Entrez Gene 29108 Human</a>
<b>Background:</b>	This gene encodes an adaptor protein that is composed of two protein-protein interaction domains: a N-terminal PYRIN-PAAD-DAPIN domain (PYD) and a C-terminal caspase-recruitment domain (CARD). The PYD and CARD domains are members of the six-helix bundle death domain-fold superfamily that mediates assembly of large signaling complexes in the inflammatory and apoptotic signaling pathways via the activation of caspase. In normal cells, this protein is localized to the cytoplasm; however, in cells undergoing apoptosis, it forms ball-like aggregates near the nuclear periphery. Two transcript variants encoding different isoforms have been found for this gene. [provided by RefSeq]
<b>Synonyms:</b>	ASC; CARD5; TMS; TMS-1; TMS1
<b>Protein Families:</b>	Druggable Genome
<b>Protein Pathways:</b>	Cytosolic DNA-sensing pathway, NOD-like receptor signaling pathway



[View online »](#)

**Product images:**

HEK293T cells were transfected with the pCMV6-ENTRY control (Left lane) or pCMV6-ENTRY PYCARD ([RC215592], Right lane) cDNA for 48 hrs and lysed. Equivalent amounts of cell lysates (5 ug per lane) were separated by SDS-PAGE and immunoblotted with anti-PYCARD. Positive lysates [LY402233] (100ug) and [LC402233] (20ug) can be purchased separately from OriGene.



HEK293T cells transfected with either [RC215592] overexpress plasmid (Red) or empty vector control plasmid (Blue) were immunostained by anti-PYCARD antibody (TA800099), and then analyzed by flow cytometry.