

Product datasheet for TA800355

PHKG2 Mouse Monoclonal Antibody [Clone ID: OTI1F9]

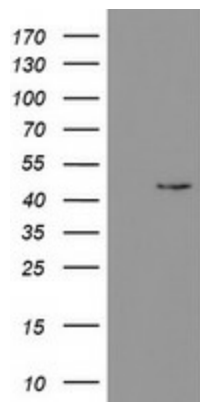
Product data:

Product Type:	Primary Antibodies
Clone Name:	OTI1F9
Applications:	IHC, WB
Recommend Dilution:	WB 1:1000, IHC 1:150
Reactivity:	Human
Host:	Mouse
Isotype:	IgG2b
Clonality:	Monoclonal
Immunogen:	Human recombinant protein fragment corresponding to amino acids 1-216 of human PHKG2 (NP_000285) produced in E.coli.
Formulation:	PBS (PH 7.3) containing 1% BSA, 50% glycerol and 0.02% sodium azide.
Concentration:	1 mg/ml
Purification:	Purified from mouse ascites fluids or tissue culture supernatant by affinity chromatography (protein A/G)
Predicted Protein Size:	46.3 kDa
Gene Name:	phosphorylase kinase catalytic subunit gamma 2
Database Link:	NP_000285 Entrez Gene 5261 Human
Background:	Phosphorylase kinase is a polymer of 16 subunits, four each of alpha, beta, gamma and delta. The alpha subunit includes the skeletal muscle and hepatic isoforms, encoded by two different genes. The beta subunit is the same in both the muscle and hepatic isoforms, and encoded by one gene. The gamma subunit also includes the skeletal muscle and hepatic isoforms, and the hepatic isoform is encoded by this gene. The delta subunit is a calmodulin and can be encoded by three different genes. The gamma subunits contain the active site of the enzyme, whereas the alpha and beta subunits have regulatory functions controlled by phosphorylation. The delta subunit mediates the dependence of the enzyme on calcium concentration. Mutations in this gene cause glycogen storage disease type 9C, also known as autosomal liver glycogenosis. Alternatively spliced transcript variants encoding different isoforms have been identified in this gene.

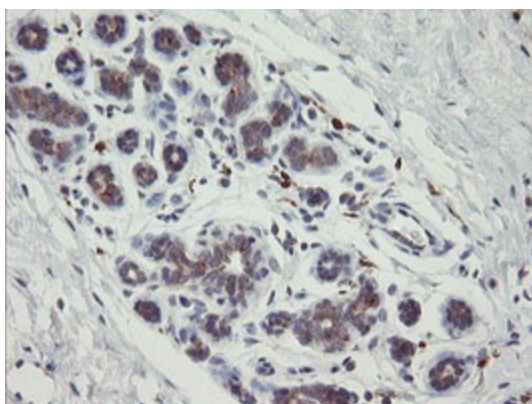


[View online »](#)

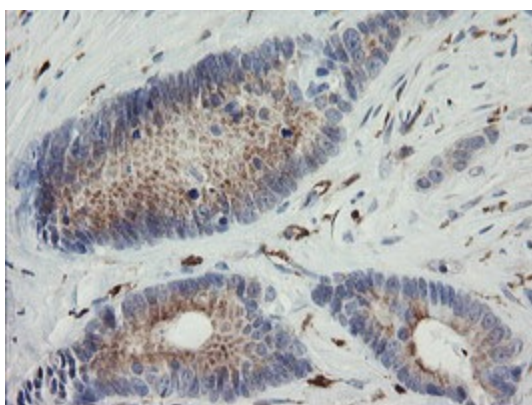
Synonyms: GSD9C
Protein Families: Druggable Genome, Protein Kinase
Protein Pathways: Calcium signaling pathway, Insulin signaling pathway

Product images:

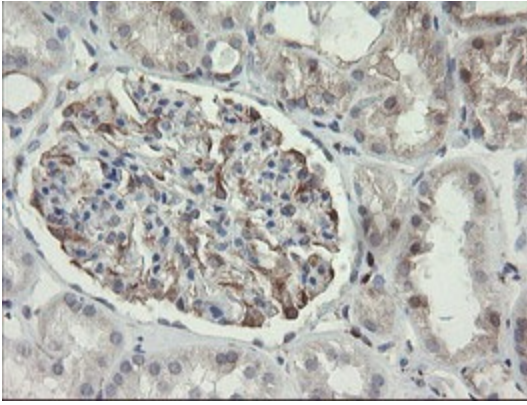
HEK293T cells were transfected with the pCMV6-ENTRY control (Left lane) or pCMV6-ENTRY PHKG2 ([RC200597], Right lane) cDNA for 48 hrs and lysed. Equivalent amounts of cell lysates (5 ug per lane) were separated by SDS-PAGE and immunoblotted with anti-PHKG2. Positive lysates [LY400111] (100ug) and [LC400111] (20ug) can be purchased separately from OriGene.



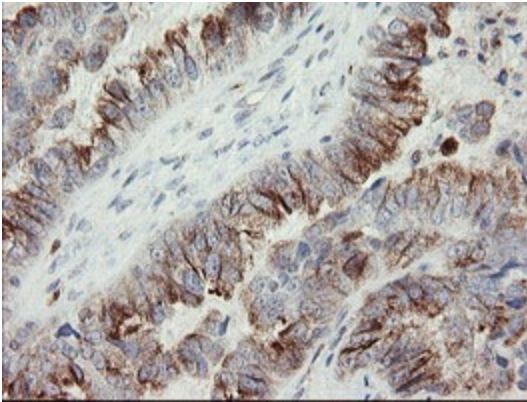
Immunohistochemical staining of paraffin-embedded Human breast tissue within the normal limits using anti-PHKG2 mouse monoclonal antibody. (Heat-induced epitope retrieval by 10mM citric buffer, pH6.0, 100°C for 10min, TA800355)



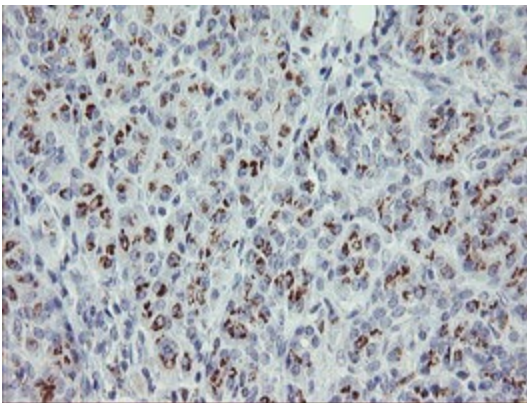
Immunohistochemical staining of paraffin-embedded Adenocarcinoma of Human colon tissue using anti-PHKG2 mouse monoclonal antibody. (Heat-induced epitope retrieval by 10mM citric buffer, pH6.0, 100°C for 10min, TA800355)



Immunohistochemical staining of paraffin-embedded Human Kidney tissue within the normal limits using anti-PHKG2 mouse monoclonal antibody. (Heat-induced epitope retrieval by 10mM citric buffer, pH6.0, 100°C for 10min, TA800355)



Immunohistochemical staining of paraffin-embedded Adenocarcinoma of Human ovary tissue using anti-PHKG2 mouse monoclonal antibody. (Heat-induced epitope retrieval by 10mM citric buffer, pH6.0, 100°C for 10min, TA800355)



Immunohistochemical staining of paraffin-embedded Human pancreas tissue within the normal limits using anti-PHKG2 mouse monoclonal antibody. (Heat-induced epitope retrieval by 10mM citric buffer, pH6.0, 100°C for 10min, TA800355)