

Product datasheet for TA808463

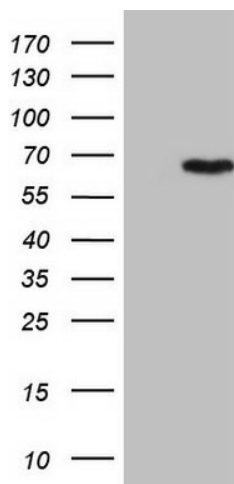
CCDC36 Mouse Monoclonal Antibody [Clone ID: OTI5E11]

Product data:

Product Type:	Primary Antibodies
Clone Name:	OTI5E11
Applications:	WB
Recommend Dilution:	WB 1:2000
Reactivity:	Human
Host:	Mouse
Isotype:	IgG1
Clonality:	Monoclonal
Immunogen:	Full length human recombinant protein of human CCDC36(NP_835467) produced in E.coli.
Formulation:	PBS (PH 7.3) containing 1% BSA, 50% glycerol and 0.02% sodium azide.
Concentration:	1 mg/ml
Purification:	Purified from mouse ascites fluids or tissue culture supernatant by affinity chromatography (protein A/G)
Predicted Protein Size:	64.9 kDa
Gene Name:	coiled-coil domain containing 36
Database Link:	NP_835467 Entrez Gene 339834 Human
Synonyms:	CT74



[View online »](#)

Product images:

HEK293T cells were transfected with the pCMV6-ENTRY control (Left lane) or pCMV6-ENTRY CCDC36 ([RC206914], Right lane) cDNA for 48 hrs and lysed. Equivalent amounts of cell lysates (5 ug per lane) were separated by SDS-PAGE and immunoblotted with anti-CCDC36 (1:2000). Positive lysates [LY406013] (100ug) and [LC406013] (20ug) can be purchased separately from OriGene.