

Product datasheet for **TA808570**

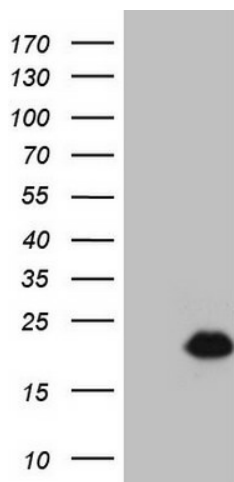
LELP1 Mouse Monoclonal Antibody [Clone ID: OTI5A5]

Product data:

| | |
|--------------------------------|---|
| Product Type: | Primary Antibodies |
| Clone Name: | OTI5A5 |
| Applications: | WB |
| Recommend Dilution: | WB 1:2000 |
| Reactivity: | Human |
| Host: | Mouse |
| Isotype: | IgG1 |
| Clonality: | Monoclonal |
| Immunogen: | Full length human recombinant protein of human LELP1(NP_001010857) produced in E.coli. |
| Formulation: | PBS (PH 7.3) containing 1% BSA, 50% glycerol and 0.02% sodium azide. |
| Concentration: | 1 mg/ml |
| Purification: | Purified from mouse ascites fluids or tissue culture supernatant by affinity chromatography (protein A/G) |
| Predicted Protein Size: | 10.5 kDa |
| Gene Name: | late cornified envelope like proline rich 1 |
| Database Link: | NP_001010857 Entrez Gene 149018 Human |
| Synonyms: | late cornified envelope-like proline-rich 1; novel small proline rich protein; OTTHUMP00000015821 |



[View online »](#)

Product images:

HEK293T cells were transfected with the pCMV6-ENTRY control (Left lane) or pCMV6-ENTRY LELP1 ([RC223962], Right lane) cDNA for 48 hrs and lysed. Equivalent amounts of cell lysates (5 ug per lane) were separated by SDS-PAGE and immunoblotted with anti-LELP1 (1:2000). Positive lysates [LY423187] (100ug) and [LC423187] (20ug) can be purchased separately from OriGene.