

## Product datasheet for TA809264

### Vitamin D Binding protein (GC) Mouse Monoclonal Antibody [Clone ID: OTI2A1]

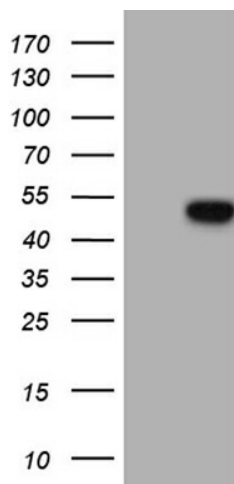
#### Product data:

Product Type:	Primary Antibodies
Clone Name:	OTI2A1
Applications:	IHC, WB
Recommend Dilution:	WB 1:500~2000, IHC 1:150
Reactivity:	Human
Host:	Mouse
Isotype:	IgG1
Clonality:	Monoclonal
Immunogen:	Full length human recombinant protein of human GC (NP_000574) produced in HEK293T cell.
Formulation:	PBS (PH 7.3) containing 1% BSA, 50% glycerol and 0.02% sodium azide.
Concentration:	1 mg/ml
Purification:	Purified from mouse ascites fluids or tissue culture supernatant by affinity chromatography (protein A/G)
Predicted Protein Size:	51.1 kDa
Gene Name:	GC, vitamin D binding protein
Database Link:	<a href="#">NP_000574 Entrez Gene 2638 Human</a>
Background:	The protein encoded by this gene belongs to the albumin gene family. It is a multifunctional protein found in plasma, ascitic fluid, cerebrospinal fluid and on the surface of many cell types. It binds to vitamin D and its plasma metabolites and transports them to target tissues. Alternatively spliced transcript variants encoding different isoforms have been found for this gene. [provided by RefSeq, Feb 2011]
Synonyms:	DBP; GC; Gc-MAF; GcMAF; GRD3; HEL-S-51; VDBG; VDBP
Protein Families:	Secreted Protein

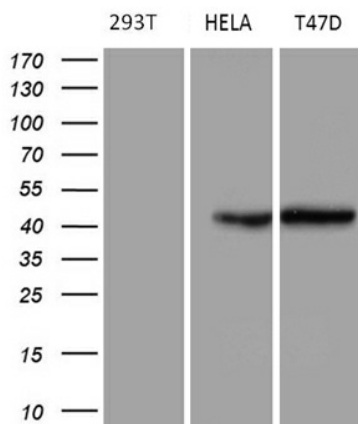


[View online »](#)

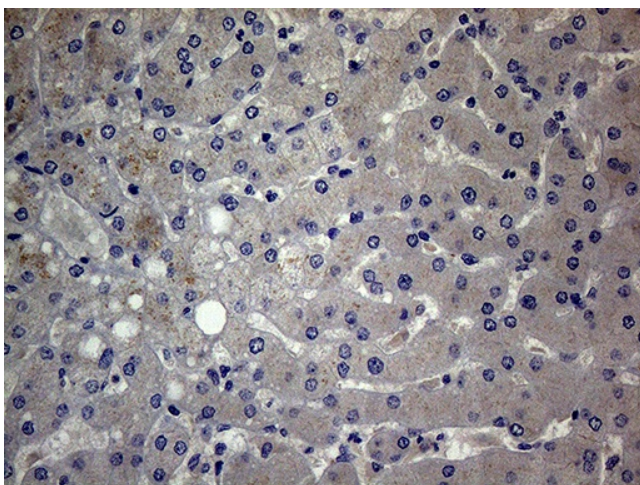
## Product images:



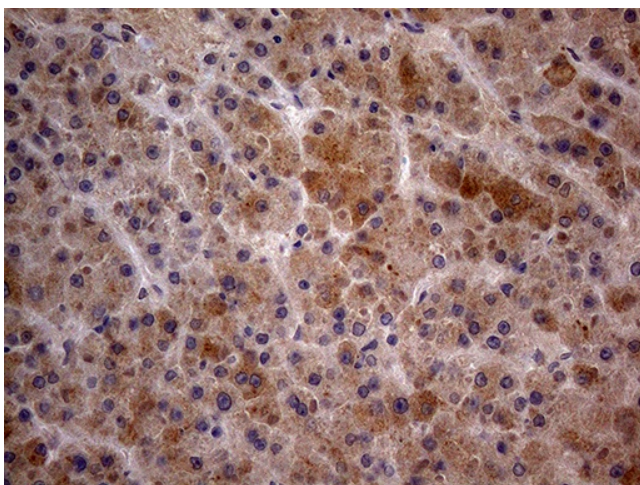
HEK293T cells were transfected with the pCMV6-ENTRY control (Left lane) or pCMV6-ENTRY GC ([RC208864], Right lane) cDNA for 48 hrs and lysed. Equivalent amounts of cell lysates (5 ug per lane) were separated by SDS-PAGE and immunoblotted with anti-GC (1:2000). Positive lysates [LY400197] (100ug) and [LC400197] (20ug) can be purchased separately from OriGene.



Western blot analysis of extracts (35ug) from 3 different cell lines by using anti-GC monoclonal antibody (HeLa: human; 293T: human; T47D: human) (1:500).



Immunohistochemical staining of paraffin-embedded Human liver tissue within the normal limits using anti-GC mouse monoclonal antibody. (Heat-induced epitope retrieval by 1mM EDTA in 10mM Tris buffer (pH8.5) at 120°C for 3min, TA809264) (1:150)



Immunohistochemical staining of paraffin-embedded Carcinoma of Human liver tissue using anti-GC mouse monoclonal antibody. (Heat-induced epitope retrieval by 1mM EDTA in 10mM Tris buffer (pH8.5) at 120°C for 3min, TA809264) (1:150)