

## Product datasheet for TA809548

### CCRK (CDK20) Mouse Monoclonal Antibody [Clone ID: OTI1B3]

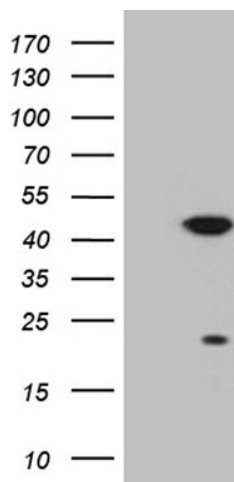
#### Product data:

|                         |   |
|-------------------------|---|
| Product Type:           | Primary Antibodies  |
| Clone Name:             | OTI1B3  |
| Applications:           | WB  |
| Recommend Dilution:     | WB 1:2000   |
| Reactivity:             | Human   |
| Host:                   | Mouse   |
| Isotype:                | IgG1  |
| Clonality:              | Monoclonal  |
| Immunogen:              | Full length human recombinant protein of human CDK20 (NP_848519) produced in E.coli.  |
| Formulation:            | PBS (PH 7.3) containing 1% BSA, 50% glycerol and 0.02% sodium azide.  |
| Concentration:          | 1 mg/ml   |
| Purification:           | Purified from mouse ascites fluids or tissue culture supernatant by affinity chromatography (protein A/G)   |
| Predicted Protein Size: | 37.4 kDa  |
| Gene Name:              | cyclin-dependent kinase 20  |
| Database Link:          | <a href="#">NP_848519</a> <a href="#">Entrez Gene 23552</a> <a href="#">Human</a>   |
| Background:             | The protein encoded by this gene contains a kinase domain most closely related to the cyclin-dependent protein kinases. The encoded kinase may activate cyclin-dependent kinase 2 and is involved in cell growth. Alternatively spliced transcript variants encoding distinct isoforms have been reported. [provided by RefSeq, Dec 2009] |
| Synonyms:               | CCRK; CDCH; P42; PNQALRE  |
| Protein Families:       | Druggable Genome, Protein Kinase  |



[View online »](#)

## Product images:



HEK293T cells were transfected with the pCMV6-ENTRY control (Left lane) or pCMV6-ENTRY CDK20 ([RC214191], Right lane) cDNA for 48 hrs and lysed. Equivalent amounts of cell lysates (5 ug per lane) were separated by SDS-PAGE and immunoblotted with anti-CDK20 (1:2000). Positive lysates [LY405956] (100ug) and [LC405956] (20ug) can be purchased separately from OriGene.