

## Product datasheet for TA809559

### ANP (NPPA) Mouse Monoclonal Antibody [Clone ID: OTI4H4]

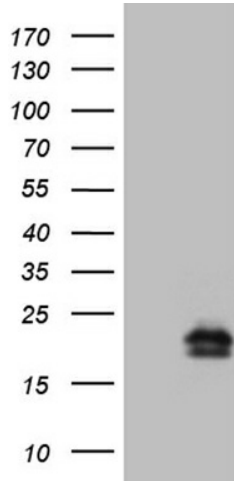
#### Product data:

Product Type:	Primary Antibodies
Clone Name:	OTI4H4
Applications:	IHC, WB
Recommend Dilution:	WB 1:2000, IHC 1:500
Reactivity:	Human
Host:	Mouse
Isotype:	IgG1
Clonality:	Monoclonal
Immunogen:	Human recombinant protein fragment corresponding to amino acids 26-153 of human NPPA(NP_006163) produced in E.coli.
Formulation:	PBS (PH 7.3) containing 1% BSA, 50% glycerol and 0.02% sodium azide.
Concentration:	1 mg/ml
Purification:	Purified from mouse ascites fluids or tissue culture supernatant by affinity chromatography (protein A/G)
Predicted Protein Size:	13.6 kDa
Gene Name:	natriuretic peptide A
Database Link:	<a href="#">NP_006163 Entrez Gene 4878 Human</a>
Background:	The protein encoded by this gene belongs to the natriuretic peptide family. Natriuretic peptides are implicated in the control of extracellular fluid volume and electrolyte homeostasis. This protein is synthesized as a large precursor (containing a signal peptide), which is processed to release a peptide from the N-terminus with similarity to vasoactive peptide, cardiodilatin, and another peptide from the C-terminus with natriuretic-diuretic activity. Mutations in this gene have been associated with atrial fibrillation familial type 6. [provided by RefSeq, Sep 2009]
Synonyms:	ANF; ANP; ATRFB6; ATRST2; CDD; CDD-ANF; CDP; PND
Protein Families:	Secreted Protein, Transmembrane

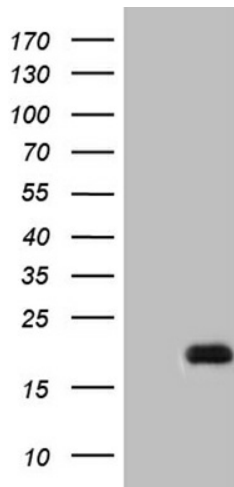


[View online »](#)

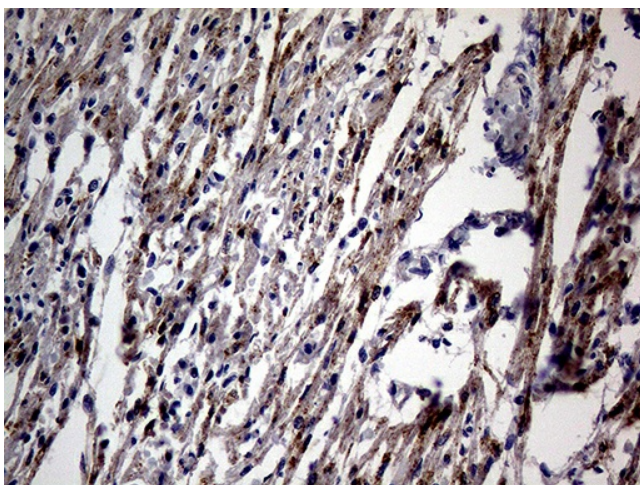
Product images:



HEK293T cells were transfected with the pCMV6-ENTRY control (Left lane) or pCMV6-ENTRY NPPA ([RC203236], Right lane) cDNA for 48 hrs and lysed. Equivalent amounts of cell lysates (5 ug per lane) were separated by SDS-PAGE and immunoblotted with anti-NPPA (1:2000). Positive lysates [LY401862] (100ug) and [LC401862] (20ug) can be purchased separately from OriGene.



Western blot analysis of extracts (35ug) from mouse heart tissue lysate by using anti-NPPA monoclonal antibody (1:500).



Immunohistochemical staining of paraffin-embedded Human adult heart tissue within the normal limits using anti-NPPA mouse monoclonal antibody. (Heat-induced epitope retrieval by 1mM EDTA in 10mM Tris buffer (pH8.5) at 120°C for 3min, TA809559) (1:500)