

Product datasheet for TA890005

HNF1 beta (HNF1B) Rabbit Polyclonal Antibody

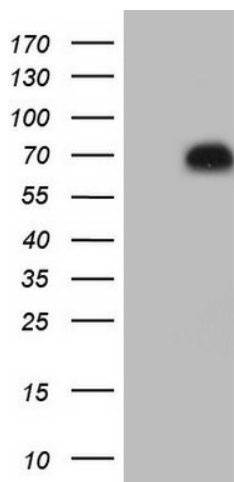
Product data:

Product Type:	Primary Antibodies
Applications:	IHC, WB
Recommend Dilution:	WB 1:500, IHC 1:150
Reactivity:	Human
Host:	Rabbit
Isotype:	IgG
Clonality:	Polyclonal
Immunogen:	Synthetic peptide conjugated to KLH derived from within residues 50-150 of Human HNF1B.
Formulation:	PBS (PH 7.3) containing 1% BSA, 50% glycerol and 0.02% sodium azide.
Concentration:	1 mg/ml
Purification:	Purified from the immunized serum by affinity chromatography (Protein A/G)
Predicted Protein Size:	61.1 kDa
Gene Name:	HNF1 homeobox B
Database Link:	NP_000449 Entrez Gene 6928 Human
Background:	This gene encodes a member of the homeodomain-containing superfamily of transcription factors. The protein binds to DNA as either a homodimer, or a heterodimer with the related protein hepatocyte nuclear factor 1-alpha. The gene has been shown to function in nephron development, and regulates development of the embryonic pancreas. Mutations in this gene result in renal cysts and diabetes syndrome and noninsulin-dependent diabetes mellitus, and expression of this gene is altered in some types of cancer. Multiple transcript variants encoding different isoforms have been found for this gene. [provided by RefSeq, Sep 2009]
Synonyms:	FJHN; HNF-1-beta; HNF-1B; HNF1beta; HNF2; HPC11; LF-B3; LFB3; MODY5; TCF-2; TCF2; VHNF1
Protein Families:	Druggable Genome, Embryonic stem cells, ES Cell Differentiation/IPS, Transcription Factors
Protein Pathways:	Maturity onset diabetes of the young

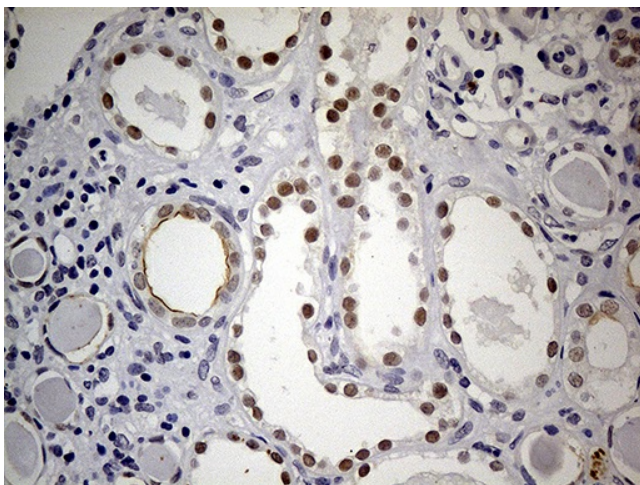


[View online »](#)

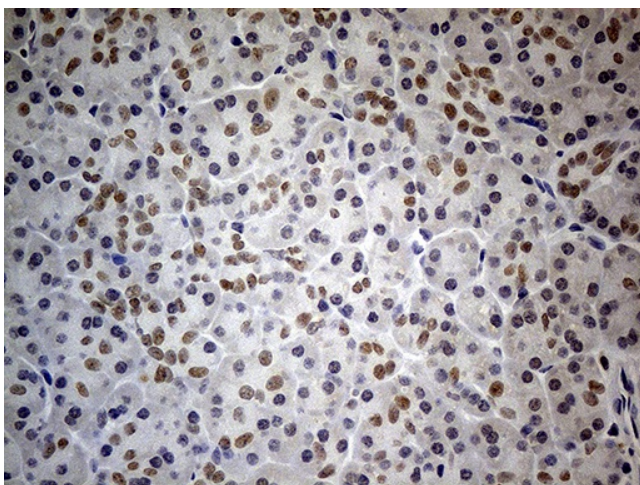
Product images:



HEK293T cells were transfected with the pCMV6-ENTRY control (Left lane) or pCMV6-ENTRY HNF1B ([RC204453], Right lane) cDNA for 48 hrs and lysed. Equivalent amounts of cell lysates (5 ug per lane) were separated by SDS-PAGE and immunoblotted with Rabbit poly. Positive lysates [LY400162] (100ug) and [LC400162] (20ug) can be purchased separately from OriGene.



Immunohistochemical staining of paraffin-embedded Human Kidney tissue within the normal limits using anti-HNF1B mouse monoclonal antibody. (Heat-induced epitope retrieval by 1mM EDTA in 10mM Tris buffer (pH8.5) at 120°C for 3min, TA890005) (1:150)



Immunohistochemical staining of paraffin-embedded Human pancreas tissue within the normal limits using anti-HNF1B mouse monoclonal antibody. (Heat-induced epitope retrieval by 1mM EDTA in 10mM Tris buffer (pH8.5) at 120°C for 3min, TA890005) (1:150)